

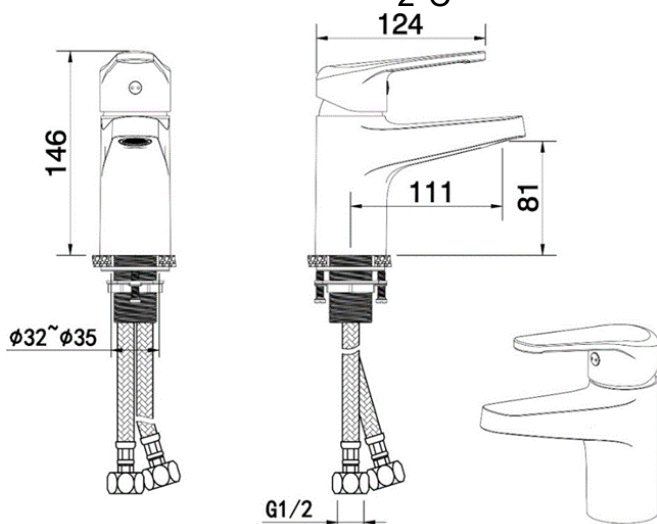
SAGITTARIUS

TAPS & SHOWERING

THERMOSTATIC TMV2 MON-OBLOC BASIN MIXER

TMV/094/C

| | |
|--------------------------------------|---|
| Construction | Brass Body (HPb59-1), equivalent to BS CZ122 / EN CW617N / CuZn40Pb2; Zinc alloy Handle |
| Finishes | Chrome plated to BS EN 248 |
| Product Type | Contemporary |
| Water Pressure Tested Between | Min. 0.2 bar, Max. 6.0 bar |
| Standards | Complies with BS5412, BS EN200 |
| Certification | WRAS approved and certified, manufactured to comply with TMV2 |
| Cartridge | 40mm Hain-Yo Thermostatic Ceramic disk cartridge |
| Aerator | M24*1 Plastic adjustable Slim Air spout aerator |
| Fitting | Stainless steel G1/2" BSP Flexible inlet connection hoses supplied |
| Guarantee | 10 years against manufacturing faults (excluding serviceable parts) |
| Additional Information | Max. temperature 45°C +/- 2°C |



The information contained on this page was correct at the date of issue. Fitting dimensions are provided as a guide only. Some variation may occur due to manufacturing tolerances. We pursue a policy of continuing improvement in design and performance of our products and so reserve the right to change specifications without prior notice

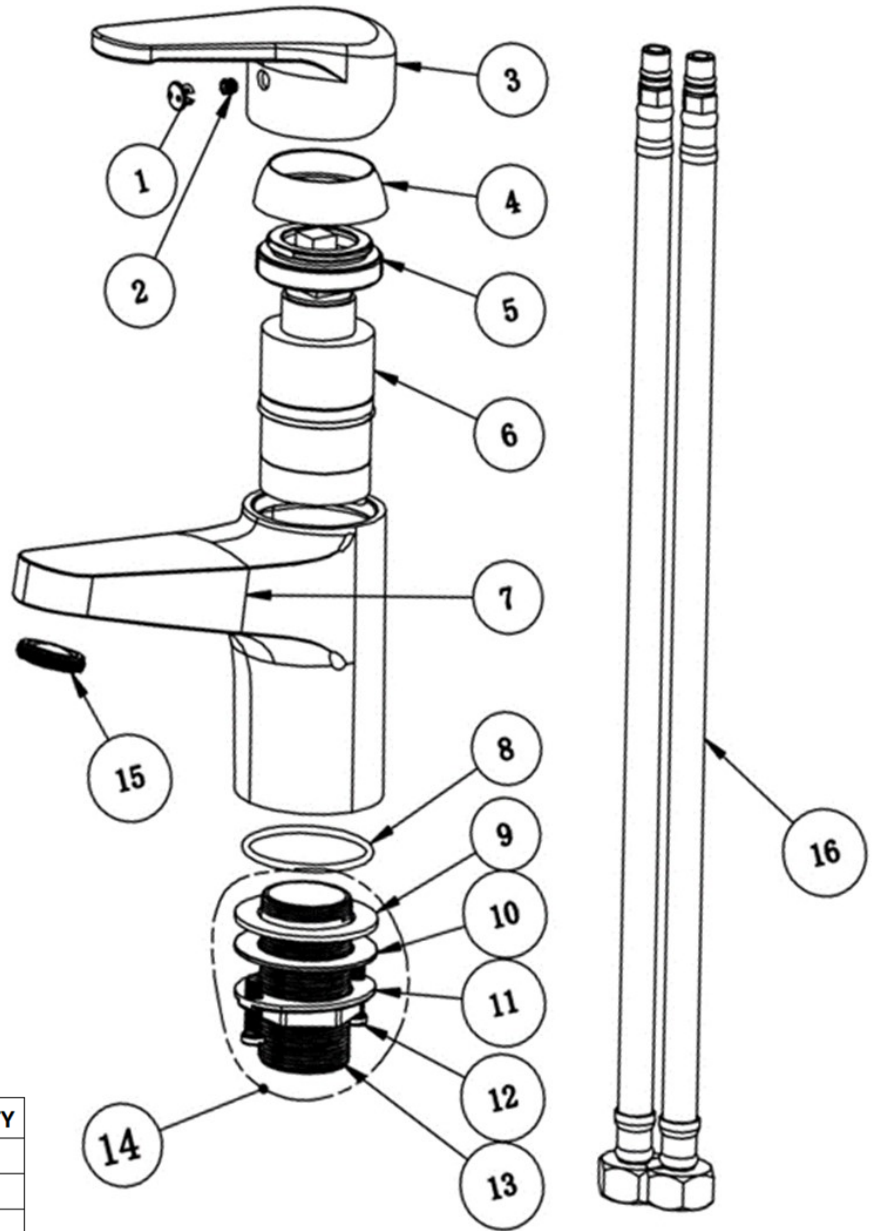
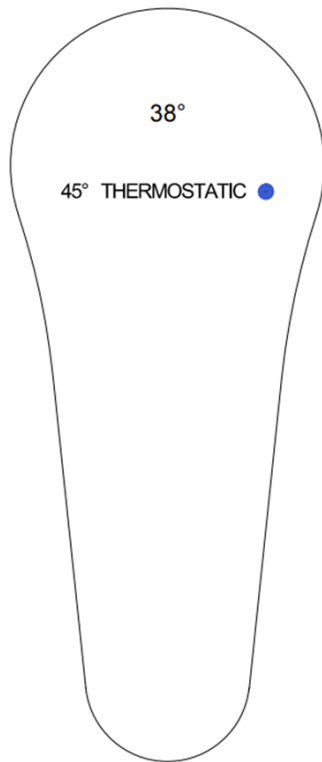
FOR FURTHER ADVICE PLEASE CONTACT :-

SAGITTARIUS LTD UNIT 1 LOWER VICTORIA STREET—CHADDERTON—OLDHAM—OL9 9TU TEL:0616 6202029

EMAIL:TECHNICAL@SAGITTARIUSTAPS.CO.UK

Flow Rates (Litres per minute)

| System Pressure | 0.1 Bar | 0.2 Bar | 0.3 Bar | 0.5 Bar | 1.0 Bar | 1.5 Bar | 2.0 Bar | 3.0 Bar | 4.0 Bar | 5.0 Bar |
|-----------------|---------|---------|---------|---------|---------|---------|---------|---------|---------|---------|
| | - | 4.9 | - | 7.3 | 10.3 | 12.9 | 14.8 | 18.1 | - | - |



| NO. | PARTS DESCRIPTION | QTY |
|-----|---------------------------------|-----|
| 1 | Ø6.8 ABS CHROME COVER CAP | 1 |
| 2 | M5*5 S/STEEL HANDLE GRUB SCREW | 1 |
| 3 | ZINC-ALLOY HANDLE | 1 |
| 4 | BRASS HANDLE COLLAR | 1 |
| 5 | BRASS CARTRIDGE NUT | 1 |
| 6 | 40MM CERAMIC DISK CARTRIDGE | 1 |
| 7 | BRASS TAP BODY | 1 |
| 8 | Ø46*2.5 EPDM O-RING | 1 |
| 9 | Ø50*Ø34*2 EPDM WASHER | 1 |
| 10 | Ø50*Ø34*1.3 METAL WASHER | 1 |
| 11 | M32x1.5*60 BRASS FIXING NUT | 1 |
| 12 | M6*23 S/STEEL FIXING SCREWS | 2 |
| 13 | M32x1.5*60 S/STEEL FITTING TAIL | 1 |
| 14 | BSP TAIL SET ASSEMBLY | 1 |
| 15 | M24x1 PLASTIC AERATOR | 1 |
| 16 | G1/2*400 S/STEEL BSP FLEXITAILS | 2 |

FOR FURTHER ADVICE PLEASE CONTACT :-

SAGITTARIUS LTD UNIT 1 LOWER VICTORIA STREET—CHADDERTON—OLDHAM—OL9 9TU TEL:0616 6202029

EMAIL:TECHNICAL@SAGITTARIUSTAPS.CO.UK