

# SAGITTARIUS

## TAPS & SHOWERING

**Construction** Brass Body

**Finishes** Chrome plated to BS EN 248

**Product Type** Contemporary

**Water Pressure Tested Between** Min. 0.5 bar, Max. 6.0 bar

**Certification** Manufactured to comply with TMV3 and WRAS standards

**Cartridge** Thermostatic & Ceramic disc valve

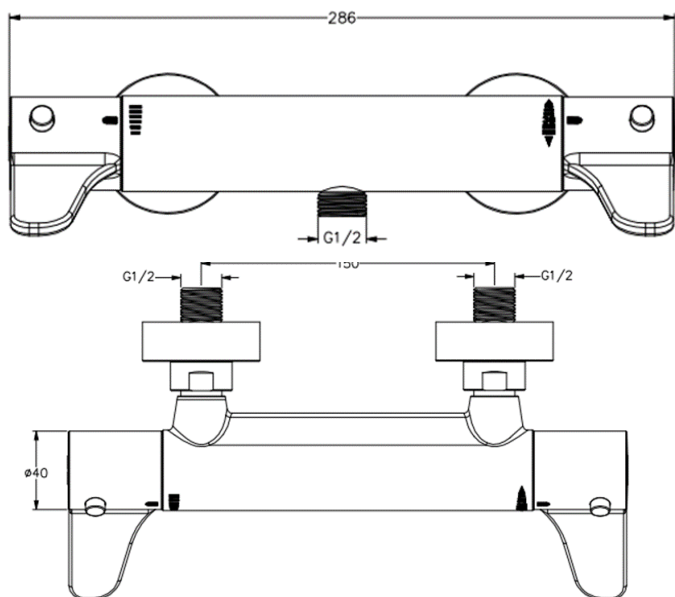
**Fitting** S-Union; G3/4" BSP Female inlet connectors; G1/2" BSP Male outlet connector

**Guarantee** 10 years against manufacturing faults (excluding serviceable parts)

**Additional Information**

1. Temperature: Pre-set 38°C, with push button override to 48°C
2. Automatic shut off in the event of hot or cold water supply failure
3. Independent flow and temperature controls for easy use

**THERMOSTATIC TMV3  
LEVER EXPOSED  
SHOWER VALVE  
TMV/093/C**



The information contained on this page was correct at the date of issue. Fitting dimensions are provided as a guide only. Some variation may occur due to manufacturing tolerances. We pursue a policy of continuing improvement in design and performance of our products and so reserve the right to change specifications without prior notice

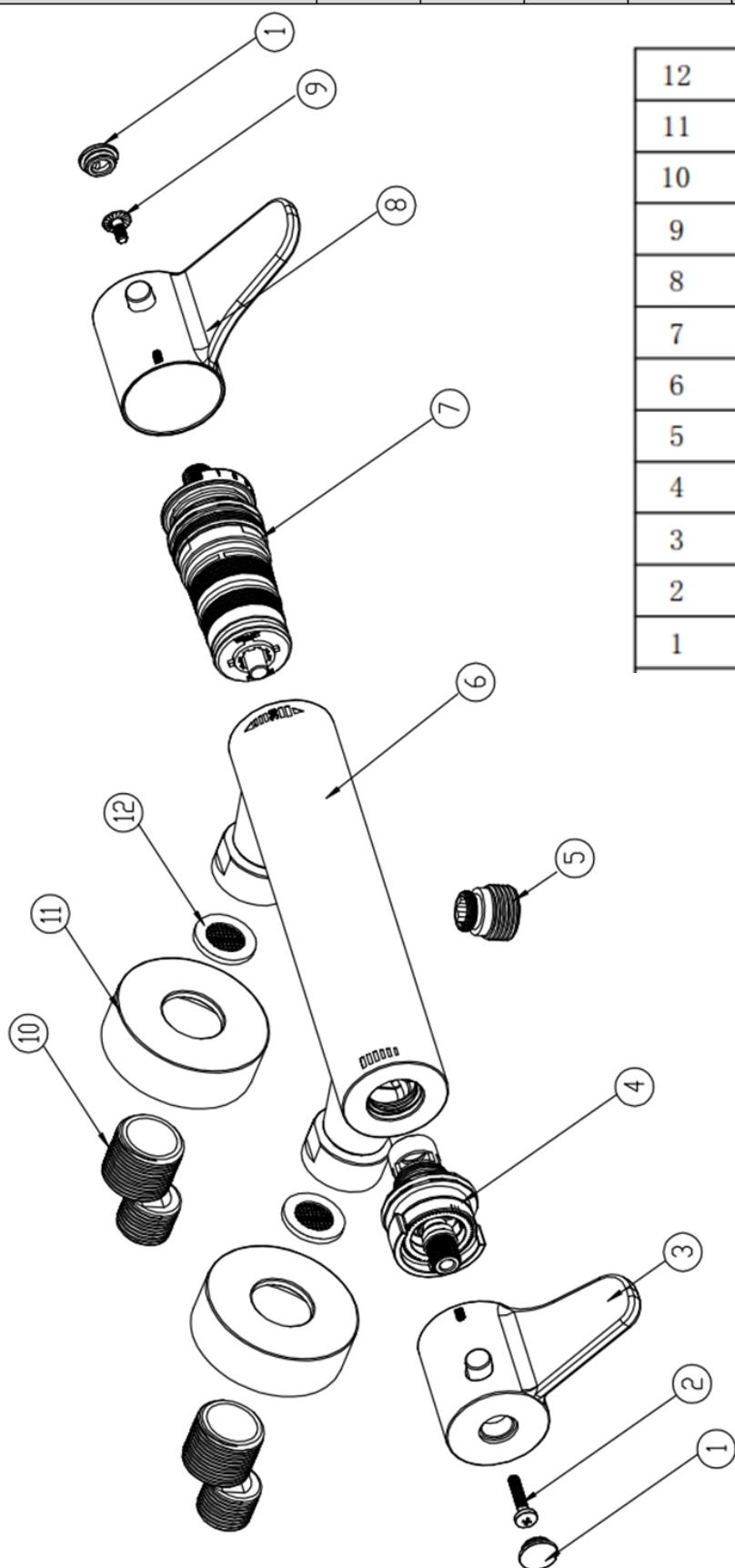
FOR FURTHER ADVICE PLEASE CONTACT :-

SAGITTARIUS LTD UNIT 1 LOWER VICTORIA STREET—CHADDERTON—OLDHAM—OL9 9TU TEL:0616 6202029

EMAIL:TECHNICAL@SAGITTARIUSTAPS.CO.UK

# **Flow Rates** (Litres per minute)

System Pressure	0.2 Bar	0.3 Bar	0.5 Bar	1.0 Bar	1.5 Bar	2.0 Bar	3.0 Bar	4.0 Bar	5.0 Bar
	6.4	-	9.7	16.3	20.5	-	-	-	-



12	Filter screen	2
11	Concealing plate	2
10	Offseat connector	2
9	Screw	1
8	Temperature handle	1
7	Temperature cartridge	1
6	Body	1
5	fitting	1
4	Flow cartridge	1
3	Flow handle	1
2	Screw	1
1	Cap	2

FOR FURTHER ADVICE PLEASE CONTACT :-

SAGITTARIUS LTD UNIT 1 LOWER VICTORIA STREET—CHADDERTON—OLDHAM—OL9 9TU TEL:0616 6202029

EMAIL:TECHNICAL@SAGITTARIUSTAPS.CO.UK