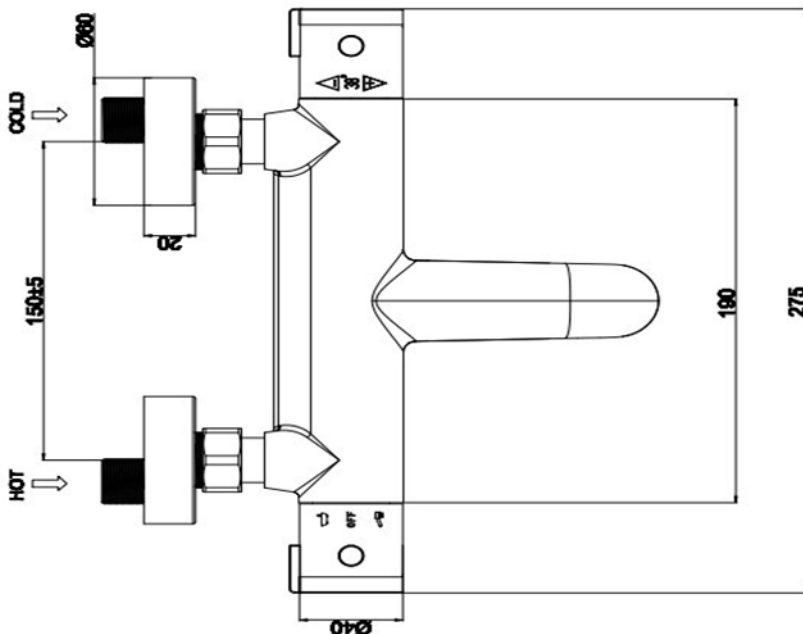


# SAGITTARIUS

## TAPS & SHOWERING

<b>Construction</b>	Brass Body (CuZn38Pb18); ABS
<b>Finishes</b>	Chrome (Ni : 8-12um, Cr : 0.25-0.3um)
<b>Product Type</b>	Contemporary
<b>Water Pressure Tested Between</b>	Min. 1.0 bar, Max. 6.0 bar
<b>Standards</b>	Complies with BSEN 1111
<b>Check valve</b>	Neoperl
<b>Aerator</b>	Neoperl spout aerator
<b>Cartridge</b>	Thermostatic cartridge
<b>Diverter</b>	Integrated Ceramic disc valve diverter
<b>Fitting</b>	Brass G3/4" BSP deck mounted pillars
<b>Guarantee</b>	10 years against manufacturing faults (excluding serviceable parts)
<b>Additional Information</b>	1. Temperature: Pre-set 38°C, with push button override to 48°C 2. Automatic shut off in the event of hot or cold water supply failure

**XANDA WALL MOUNTED  
THERMOSTATIC BATH SHOW-  
ER MIXER & RIGID RISER KIT  
CHROME  
TBS/091/C**



The information contained on this page was correct at the date of issue. Fitting dimensions are provided as a guide only. Some variation may occur due to manufacturing tolerances. We pursue a policy of continuing improvement in design and performance of our products and so reserve the right to change specifications without prior notice

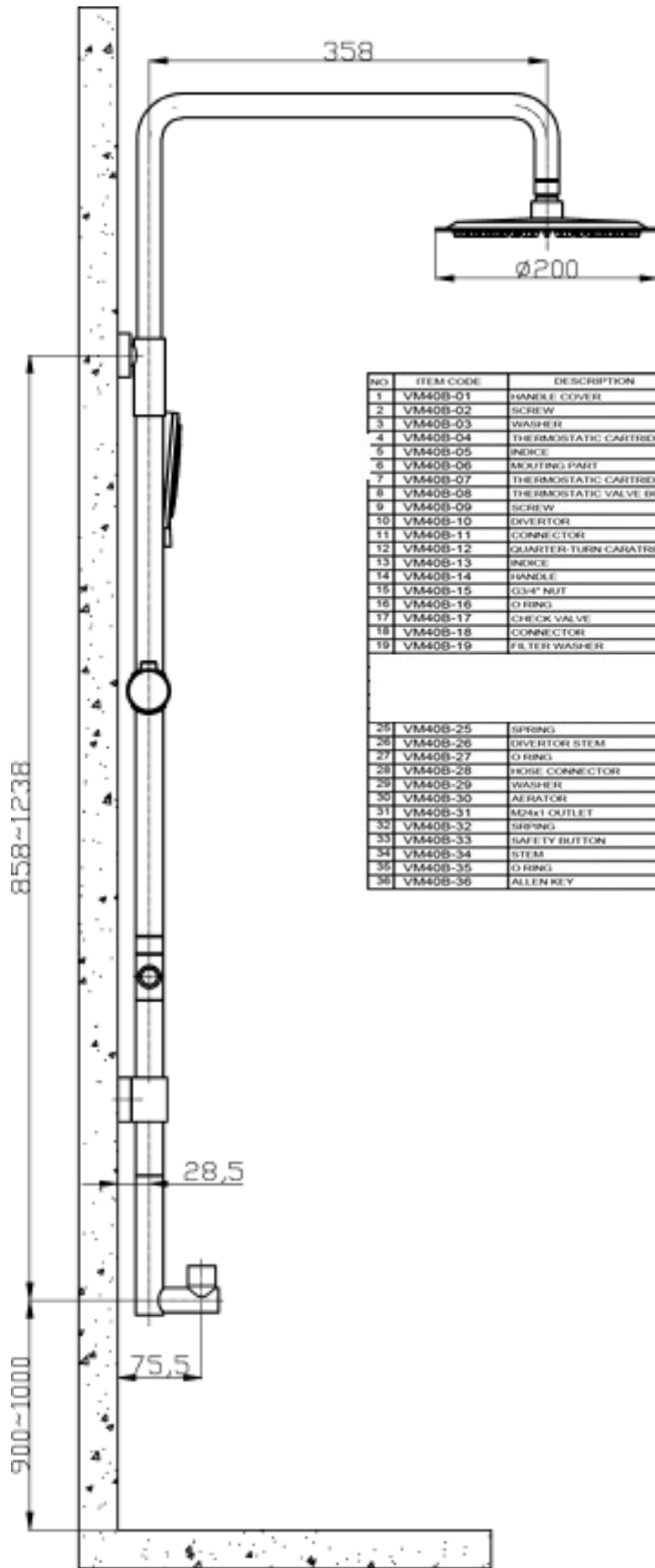
FOR FURTHER ADVICE PLEASE CONTACT :-

SAGITTARIUS LTD UNIT 1 LOWER VICTORIA STREET—CHADDERTON—OLDHAM—OL9 9TU TEL:0616 6202029

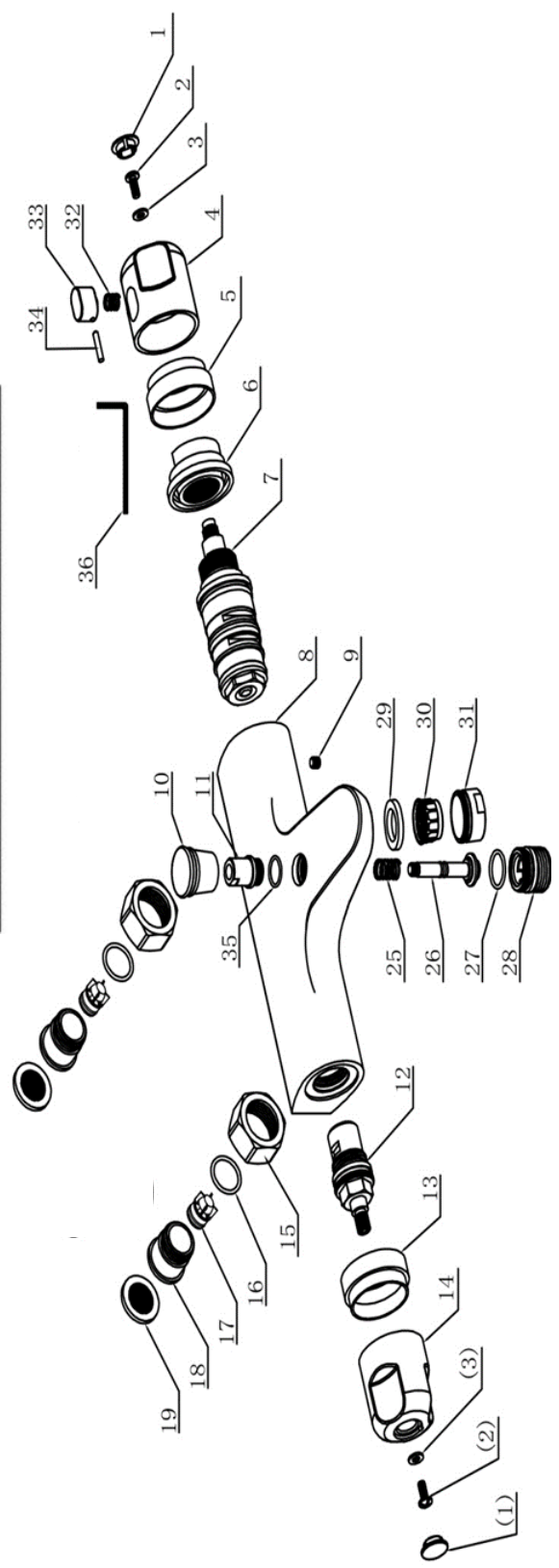
EMAIL:TECHNICAL@SAGITTARIUSTAPS.CO.UK

**Flow Rates** (Litres per minute)

System Pressure	0.1 Bar	0.2 Bar	0.3 Bar	0.5 Bar	1.0 Bar	1.5 Bar	2.0 Bar	3.0 Bar	4.0 Bar	5.0 Bar
	6.2	7.0	-	9.6	12.6	-	17.4	22.0	-	-



NO	ITEM CODE	DESCRIPTION	QTY
1	VM408-01	HANDLE COVER	2
2	VM408-02	SCREW	2
3	VM408-03	WASHER	2
4	VM408-04	THERMOSTATIC CARTRIDGE	1
5	VM408-05	INDICE	1
6	VM408-06	ASKETING PART	1
7	VM408-07	THERMOSTATIC CARTRIDGE	1
8	VM408-08	THERMOSTATIC VALVE BODY	1
9	VM408-09	SCREW	1
10	VM408-10	DEVERTOR	1
11	VM408-11	CONNECTOR	1
12	VM408-12	QUARTER-TURN CARTRIDGE	1
13	VM408-13	INDICE	1
14	VM408-14	HANDLE	1
15	VM408-15	Ø3/4" NUT	2
16	VM408-16	O RING	2
17	VM408-17	CHECK VALVE	2
18	VM408-18	CONNECTOR	2
19	VM408-19	FILTER WASHER	2
25	VM408-25	SPRING	1
26	VM408-26	DEVERTOR STEM	1
27	VM408-27	O RING	2
28	VM408-28	HOSE CONNECTOR	1
29	VM408-29	WASHER	1
30	VM408-30	AERATOR	1
31	VM408-31	M2x1 OUTLET	1
32	VM408-32	SPRING	1
33	VM408-33	SAFETY BUTTON	1
34	VM408-34	STEM	1
35	VM408-35	O RING	1
36	VM408-36	ALLEN KEY	1



FOR FURTHER ADVICE PLEASE CONTACT :-  
 SAGITTARIUS LTD UNIT 1 LOWER VICTORIA STREET—CHADDERTON—OLDHAM—OL9 9TU TEL:0616 6202029  
 EMAIL:TECHNICAL@SAGITTARIUSTAPS.CO.UK