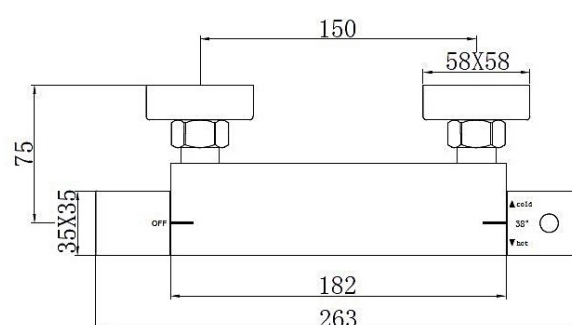
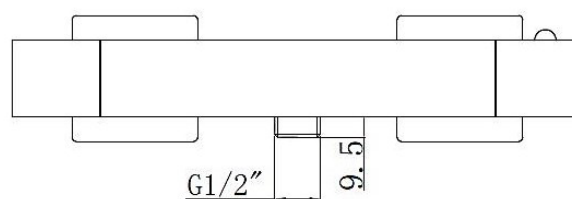


SAGITTARIUS

TAPS & SHOWERING

STARK CUBE EXPOSED SHOWER VALVE CHROME SV/593/C

Construction	Brass Body (HPb59-1) equivalent to EN CuZn39Pb2/ CW612N; SS201 Stainless steel Base plates; ABS Handles
Finishes	Chrome plated to BS EN 248
Product Type	Contemporary
Water Pressure Tested Between	Min. 0.2 bar, Max. 6.0 bar
Standards	Complies with BSEN 1111
Certification	WRAS & TMV2 approved and certified
Cartridge	Thermostatic & Ceramic disc valve
Fitting	Brass S-Union connectors (Male thread offset 1/2 inch x 3/4" BSP with Escutcheon) ; Brass G1/2" BSP Male thread outlet connection
Check valve	DN15 ABS check valves (0.5-10gpm)
Guarantee	10 years against manufacturing faults (excluding serviceable parts)
Additional Information	Temperature: Pre-set 38°C, with push button override to 48°C Automatic shut off in the event of hot or cold water supply failure



The information contained on this page was correct at the date of issue. Fitting dimensions are provided as a guide only. Some variation may occur due to manufacturing tolerances. We pursue a policy of continuing improvement in design and performance of our products and so reserve the right to change specifications without prior notice

FOR FURTHER ADVICE PLEASE CONTACT :-

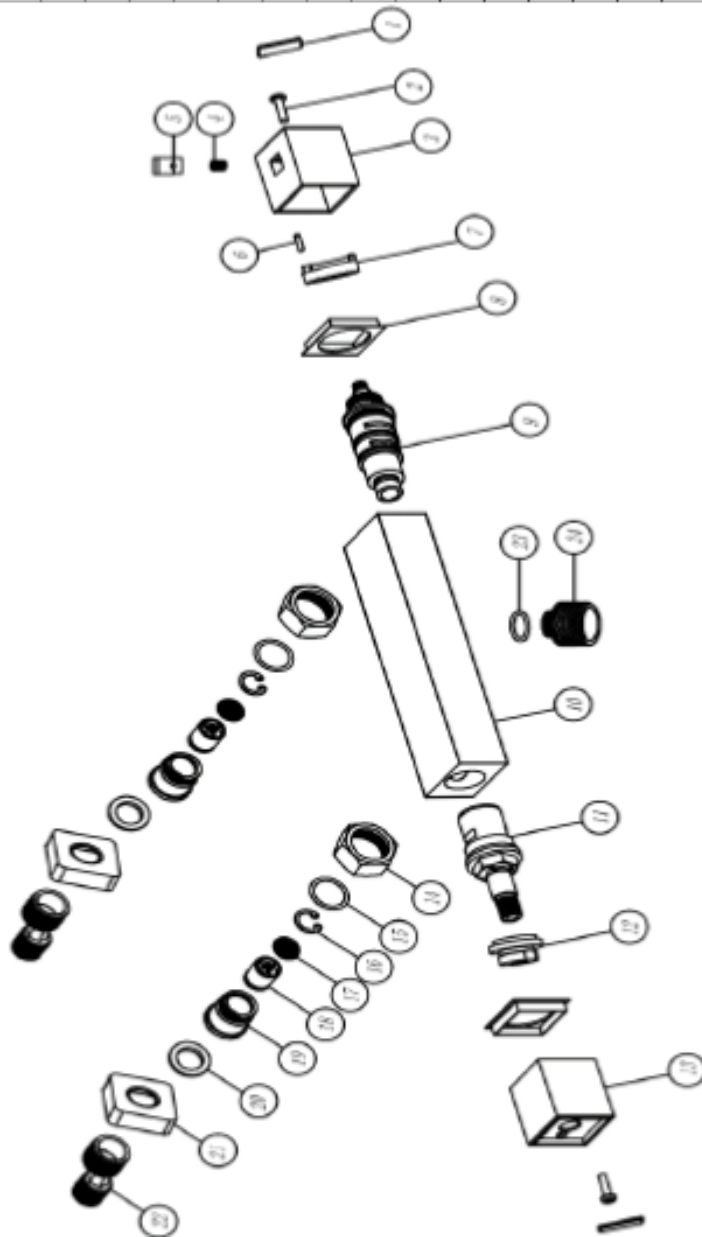
SAGITTARIUS LTD UNIT 1 LOWER VICTORIA STREET—CHADDERTON—OLDHAM—OL9 9TU TEL:0616 6202029

EMAIL:TECHNICAL@SAGITTARIUSTAPS.CO.UK

Flow Rates (Litres per minute)

System Pressure	0.1 Bar	0.2 Bar	0.3 Bar	0.5 Bar	1.0 Bar	1.5 Bar	2.0 Bar	3.0 Bar	4.0 Bar	5.0 Bar
	6.0	7.0	-	8.5	12.0	14.0	18.5	22.0	-	-

NO.	DESCRIPTION	QTY
1	ABS HANDLE COVER	2
2	SS304 M4*14 SCREW	2
3	ABS THERMO HANDLE	1
4	SS304 SPRING	1
5	ABS PUSH BUTTON	1
6	SS304 HANDLE PIN	1
7	ABS THERMO STOP RING	1
8	PE HANDLE WASHER	1
9	THERMO CARTRIDGE	1
10	SHOWER BAR VALVE	1
11	1/2" CERAMIC DISC CARTRIDGE	1
12	BRASS CARTRIDGE NUT	1
13	ON/OFF HANDLE	1
14	BRASS LOCK NUT	2
15	19*2 NBR O-RING	2
16	SS304 CIRCLIP	2
17	SS304 FILTER WASHER	2
18	ABS DN15 CHECK VALVE	2
19	BRASS CONNECTOR	2
20	24.5*13*3 NBR WASHER	2
21	SS201 BASE PLATE	2
22	G1/2"G3/4 BRASS S-UNION	2
23	16*1.9 NBR O-RING	2
24	G1/2" OUTLET CONNECTOR	1



FOR FURTHER ADVICE PLEASE CONTACT :-

SAGITTARIUS LTD UNIT 1 LOWER VICTORIA STREET—CHADDERTON—OLDHAM—OL9 9TU TEL:0616 6202029

EMAIL:TECHNICAL@SAGITTARIUSTAPS.CO.UK