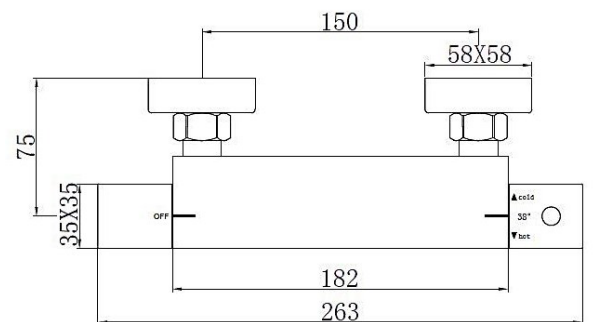
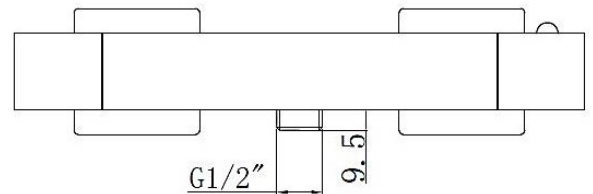


# SAGITTARIUS

## TAPS & SHOWERING

<b>Construction</b>	Brass Body (HPb59-1) equivalent to EN CuZn39Pb2/ CW612N; SS201 Stainless steel Base plates; ABS Handles
<b>Finishes</b>	MATT BLACK
<b>Product Type</b>	Contemporary
<b>Water Pressure Tested Between</b>	Min. 0.2 bar, Max. 6.0 bar
<b>Standards</b>	Complies with BSEN 1111
<b>Certification</b>	WRAS & TMV2 approved and certified
<b>Cartridge</b>	Thermostatic & Ceramic disc valve
<b>Fitting</b>	Brass S-Union connectors (Male thread offset 1/2 inch x 3/4" BSP with Escutcheon) ; Brass G1/2" BSP Male thread outlet connection
<b>Check valve</b>	DN15 ABS check valves (0.5-10gpm )
<b>Guarantee</b>	10 years against manufacturing faults (excluding serviceable parts)
<b>Additional Information</b>	Temperature: Pre-set 38°C, with push button override to 48°C Automatic shut off in the event of hot or cold water supply failure

**STARK CUBE EXPOSED  
SHOWER VALVE CHROME**  
**SV/593/B**



The information contained on this page was correct at the date of issue. Fitting dimensions are provided as a guide only. Some variation may occur due to manufacturing tolerances. We pursue a policy of continuing improvement in design and performance of our products and so reserve the right to change specifications without prior notice

FOR FURTHER ADVICE PLEASE CONTACT :-

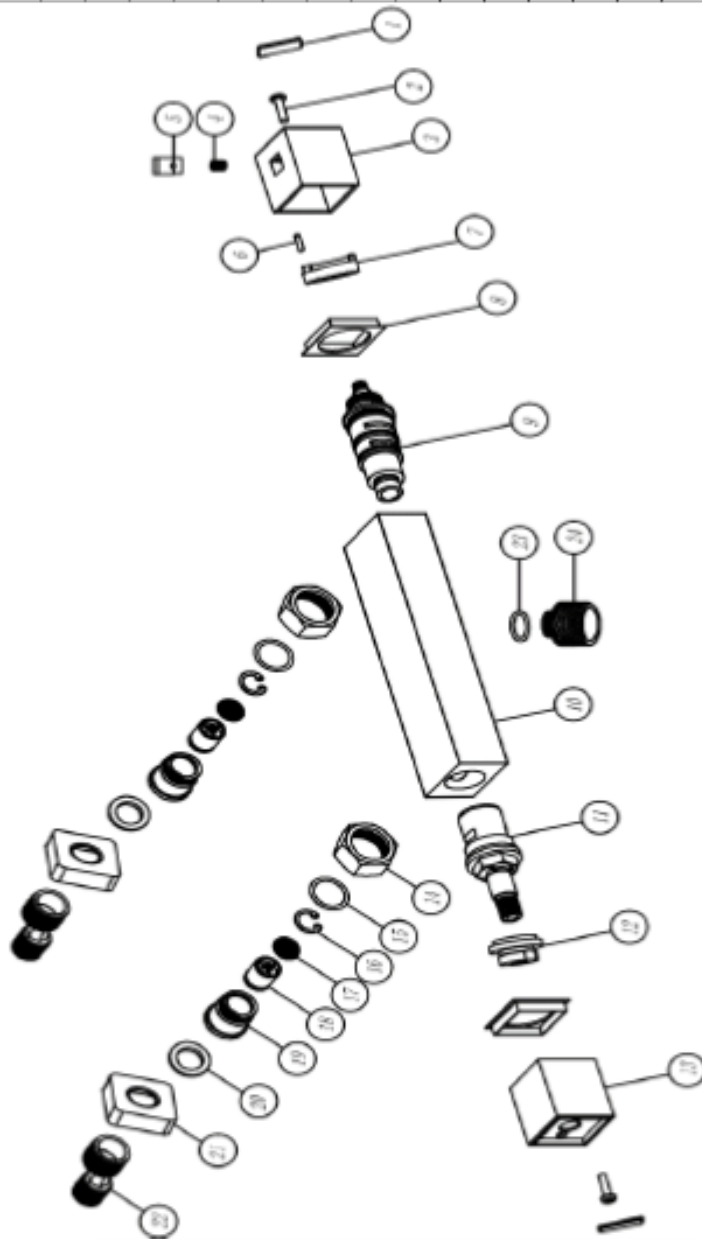
SAGITTARIUS LTD UNIT 1 LOWER VICTORIA STREET—CHADDERTON—OLDHAM—OL9 9TU TEL:0616 6202029

EMAIL:TECHNICAL@SAGITTARIUSTAPS.CO.UK

**Flow Rates (Litres per minute)**

System Pressure	0.1 Bar	0.2 Bar	0.3 Bar	0.5 Bar	1.0 Bar	1.5 Bar	2.0 Bar	3.0 Bar	4.0 Bar	5.0 Bar
	6.0	7.0	-	8.5	12.0	14.0	18.5	22.0	-	-

NO.	DESCRIPTION	QTY
1	ABS HANDLE COVER	2
2	SS304 M4*14 SCREW	2
3	ABS THERMO HANDLE	1
4	SS304 SPRING	1
5	ABS PUSH BUTTON	1
6	SS304 HANDLE PIN	1
7	ABS THERMO STOP RING	1
8	PE HANDLE WASHER	1
9	THERMO CARTRIDGE	1
10	SHOWER BAR VALVE	1
11	1/2" CERAMIC DISC CARTRIDGE	1
12	BRASS CARTRIDGE NUT	1
13	ON/OFF HANDLE	1
14	BRASS LOCK NUT	2
15	19*2 NBR O-RING	2
16	SS304 CIRCLIP	2
17	SS304 FILTER WASHER	2
18	ABS DN15 CHECK VALVE	2
19	BRASS CONNECTOR	2
20	24.5*13*3 NBR WASHER	2
21	SS201 BASE PLATE	2
22	G1/2"G3/4 BRASS S-UNION	2
23	16*1.9 NBR O-RING	2
24	G1/2" OUTLET CONNECTOR	1



FOR FURTHER ADVICE PLEASE CONTACT :-

SAGITTARIUS LTD UNIT 1 LOWER VICTORIA STREET—CHADDERTON—OLDHAM—OL9 9TU TEL:0616 6202029

EMAIL:TECHNICAL@SAGITTARIUSTAPS.CO.UK