

SAGITTARIUS

TAPS & SHOWERING

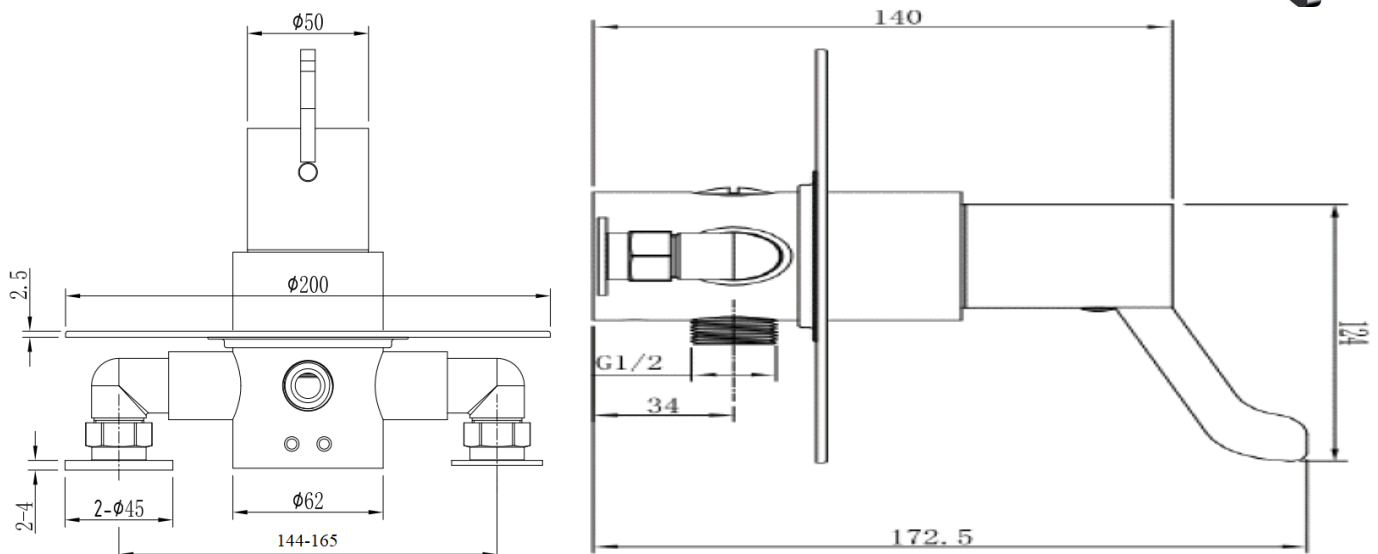
Construction	Brass Body (CuZn38Pb18); SS304 Stainless steel Face plate; Zinc-alloy Handle; Brass Elbow & Base plate
Finishes	Chrome plated to BS EN 248
Product Type	Contemporary
Water Pressure Tested Between	Min. 1.5 bar, Max. 6.0 bar
Standards	Complies with BSEN 1111
Cartridge	Thermostatic cartridge
Fitting	Inlet: Brass 15mm Com- pression Connection; Outlet: Brass G1/2" BSP Male thread

CONCEALED THERMOSTATIC SEQUENTIAL SHOWER VALVE CHROME

SV/590/C



Guarantee	10 years against manufacturing faults (excluding serviceable parts)
Additional In- formation	Adjustable temperature control



The information contained on this page was correct at the date of issue. Fitting dimensions are provided as a guide only. Some variation may occur due to manufacturing tolerances. We pursue a policy of continuing improvement in design and performance of our products and so reserve the right to change specifications without prior notice

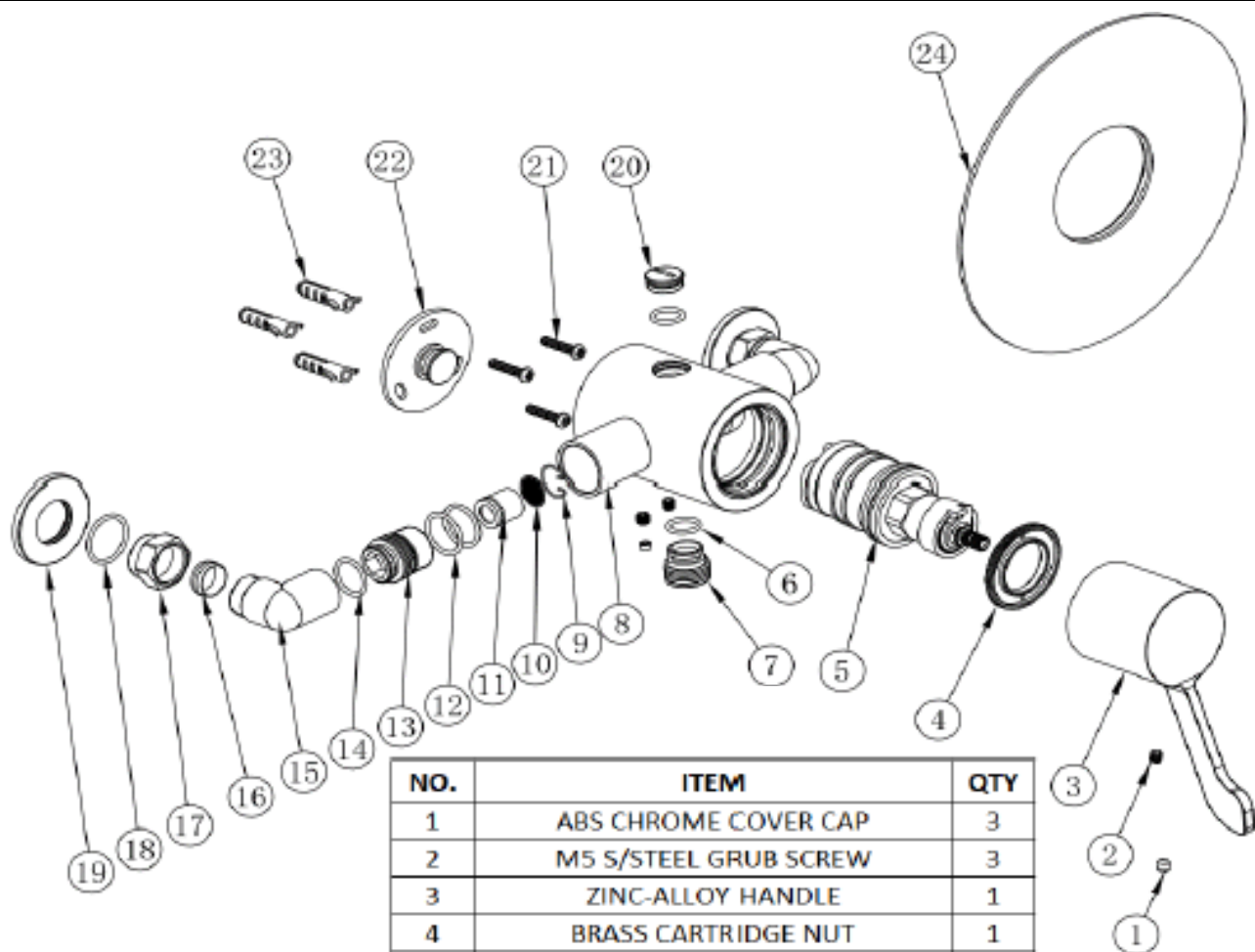
FOR FURTHER ADVICE PLEASE CONTACT :-

SAGITTARIUS LTD UNIT 1 LOWER VICTORIA STREET—CHADDERTON—OLDHAM—OL9 9TU TEL:0616 6202029

EMAIL:TECHNICAL@SAGITTARIUSTAPS.CO.UK

Flow Rates (Litres per minute)

System Pressure	0.1 Bar	0.2 Bar	0.3 Bar	0.5 Bar	1.0 Bar	1.5 Bar	2.0 Bar	3.0 Bar	4.0 Bar	5.0 Bar
	1.5	1.9	2.2	3.1	4.9	6.3	7.5	9.5	11.2	12.7



NO.	ITEM	QTY
1	ABS CHROME COVER CAP	3
2	M5 S/STEEL GRUB SCREW	3
3	ZINC-ALLOY HANDLE	1
4	BRASS CARTRIDGE NUT	1
5	THERMOSTATIC CARTRIDGE	1
6	NBR O-RING	2
7	G1/2 BRASS CONNECTOR	1
8	BRASS WELDED VALVE BODY	1
9	SS304 S/STEEL CIRCLIP	2
10	SS304 S/STEEL FILTER WASHER	2
11	ABS CHECK VALVE	2
12	NBR O-RING	4
13	BRASS INLET CONNECTOR	2
14	NBR O-RING	2
15	BRASS INLET ELBOW	2
16	COPPER OLIVE	2
17	BRASS BACK NUT	2
18	NBR O-RING	2
19	BRASS BASE PLATE	2
20	BRASS OUTLET CAP	1
21	SS201 S/STEEL SELF-TAPPING SCREW	3
22	S/STEEL BASE FOR VALVE	1
23	ABS WALL PLUG	3
24	SS304 S/STEEL FACE PLATE	1

FOR FURTHER ADVICE PLEASE CONTACT :-

SAGITTARIUS LTD UNIT 1 LOWER VICTORIA STREET—CHADDERTON—OLDHAM—OL9 9TU TEL:0616 6202029

EMAIL:TECHNICAL@SAGITTARIUSTAPS.CO.UK