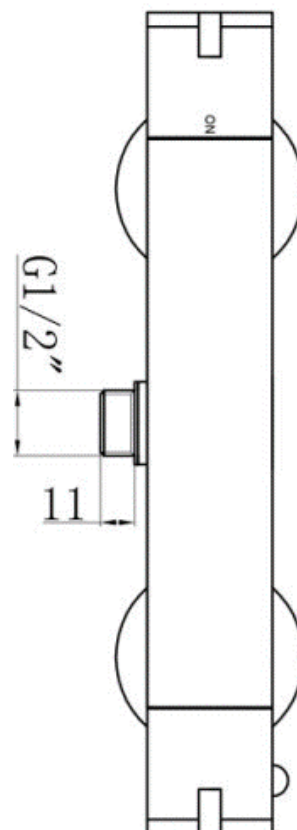
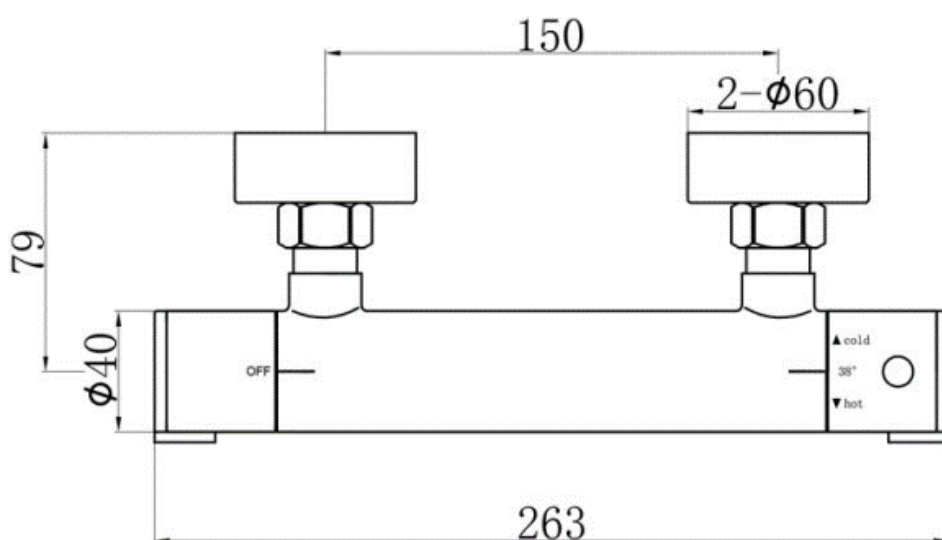


SAGITTARIUS

TAPS & SHOWERING

Construction	Brass
Product Type	Contemporary
Water Pressure Tested Between	Min. 0.2 bar, Max. 6.0 bar
Certification	WRAS & TMV2 approved and certified
Cartridge	Thermostatic cartridge
Fitting	Easy fitting
Guarantee	10 years against manufacturing faults (excluding serviceable parts)
Additional Information	Temperature: Pre-set 38°C, with push button override to 48°C Automatic shut off in the event of hot or cold water supply failure

LOGIC EXPOSED THERMOSTATIC SHOWER VALVE SV/568/C



The information contained on this page was correct at the date of issue. Fitting dimensions are provided as a guide only. Some variation may occur due to manufacturing tolerances. We pursue a policy of continuing improvement in design and performance of our products and so reserve the right to change specifications without prior notice

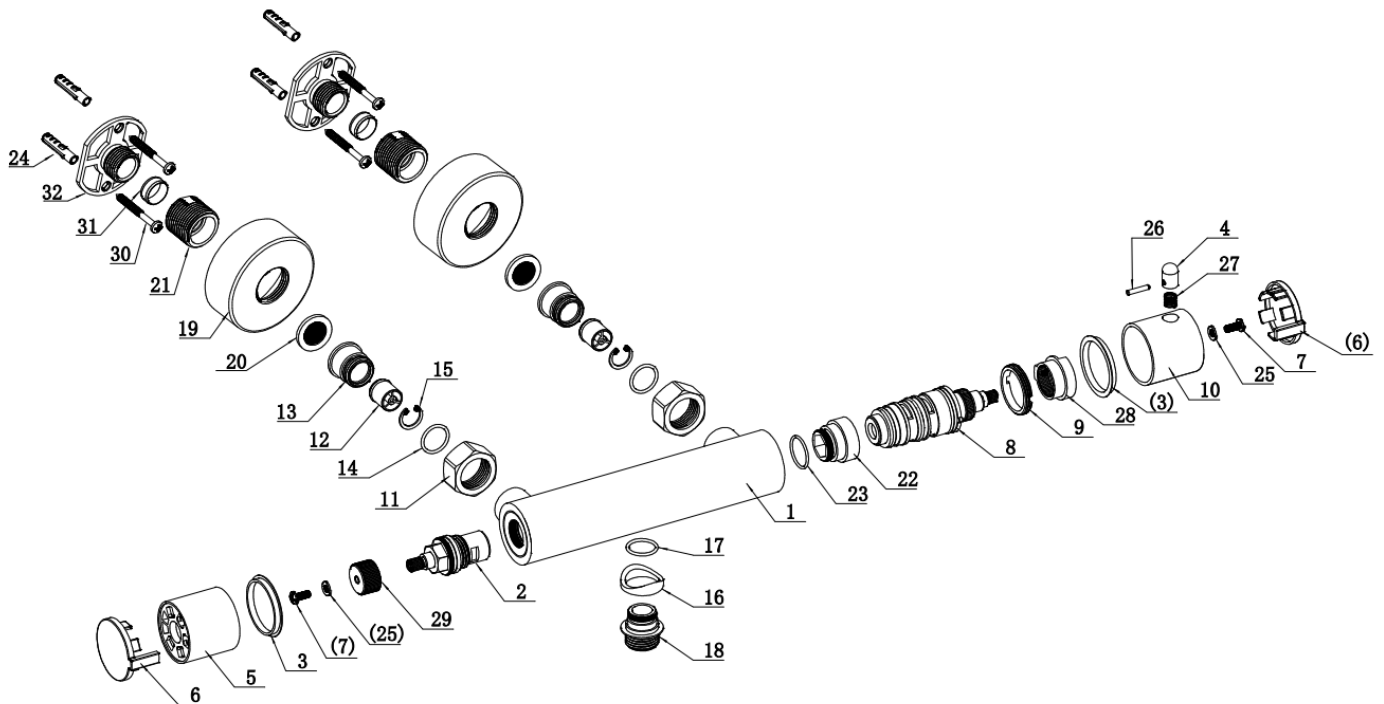
FOR FURTHER ADVICE PLEASE CONTACT :-

SAGITTARIUS LTD UNIT 1 LOWER VICTORIA STREET—CHADDERTON—OLDHAM—OL9 9TU TEL:0616 6202029

EMAIL:TECHNICAL@SAGITTARIUSTAPS.CO.UK

Flow Rates (Litres per minute)

System Pressure	0.1 Bar	0.2 Bar	0.3 Bar	0.5 Bar	1.0 Bar	1.5 Bar	2.0 Bar	3.0 Bar	4.0 Bar	5.0 Bar
	6.0	7.0	-	8.5	12.0	14.0	18.5	22.0	-	-



NO	Description	QTY	NO	Description	QTY
1	Body	1	18	G1/2" Connector	1
2	on/off cartridge	1	19	Round wall cover	2
3	Washer	2	20	Filter washer	2
4	Safety button	1	21	Easyfit nut	1
5	Diverter Handle	1	22	Seal connector	1
6	Handle cover	2	23	O-ring	1
7	Screw	2	24	Screw fitting	4
8	Thermo-cartridge	1	25	Washer	1
9	Mounting nut	1	26	Level	1
10	Thermo-handle	1	28	Thermo-stop ring	1
11	Nut	2	29	Plastic nut	1
12	Check valve	2	30	Screw	4
13	Connector	2	31	Ring	2
14	O-ring	2	32	Wall plate stand	2
15	O-ring	1			
16	Mounting nut	1			
17	O-ring	1			

FOR FURTHER ADVICE PLEASE CONTACT :-

SAGITTARIUS LTD UNIT 1 LOWER VICTORIA STREET—CHADDERTON—OLDHAM—OL9 9TU TEL:0616 6202029

EMAIL:TECHNICAL@SAGITTARIUSTAPS.CO.UK