

SAGITTARIUS

TAPS & SHOWERING

Construction	Valve: High Performance Polyamide (PPA) Body & SS201 Stainless steel Casing; Stainless steel Rail; Stainless steel Base plates; ABS Handles Matt Black
Finishes	
Product Type	Contemporary
Water Pressure Tested Between Standards	Min. 0.5 bar, Max. 6.0 bar Complies with BSEN 1111
Certification	WRAS approved and certified
Cartridge	Thermostatic
Diverter	Integrated ceramic disc valve diverter
Fitting	S-Union connectors (Male thread offset 1/2 inch x 3/4" BSP with Escutcheon); Brass G1/2" BSP Male bottom outlet & G3/4" BSP Male upper outlet connection
Guarantee	5 years against manufacturing faults (excluding serviceable parts)
Additional Information	<ol style="list-style-type: none">1. Temperature: Pre-set 38°C, with push button override to 48°C2. Automatic shut off in the event of hot or cold water supply failure3. COOL TOUCH Bar Valve technology4. Ultra Slim Shower head : Matt Black, 200mm5. Shower handset : Matt Black, ABS, 3 modes6. Handset holder : Matt Black , ABS , adjustable height7. Shower hose : Matt Black, PVC 1.5m8. Telescopic adjustable height riser rail: Matt Black, Stainless steel

**NOLA HIGH FLOW
EXPOSED VALVE AND
RISER KIT BLACK
SS/625/B**

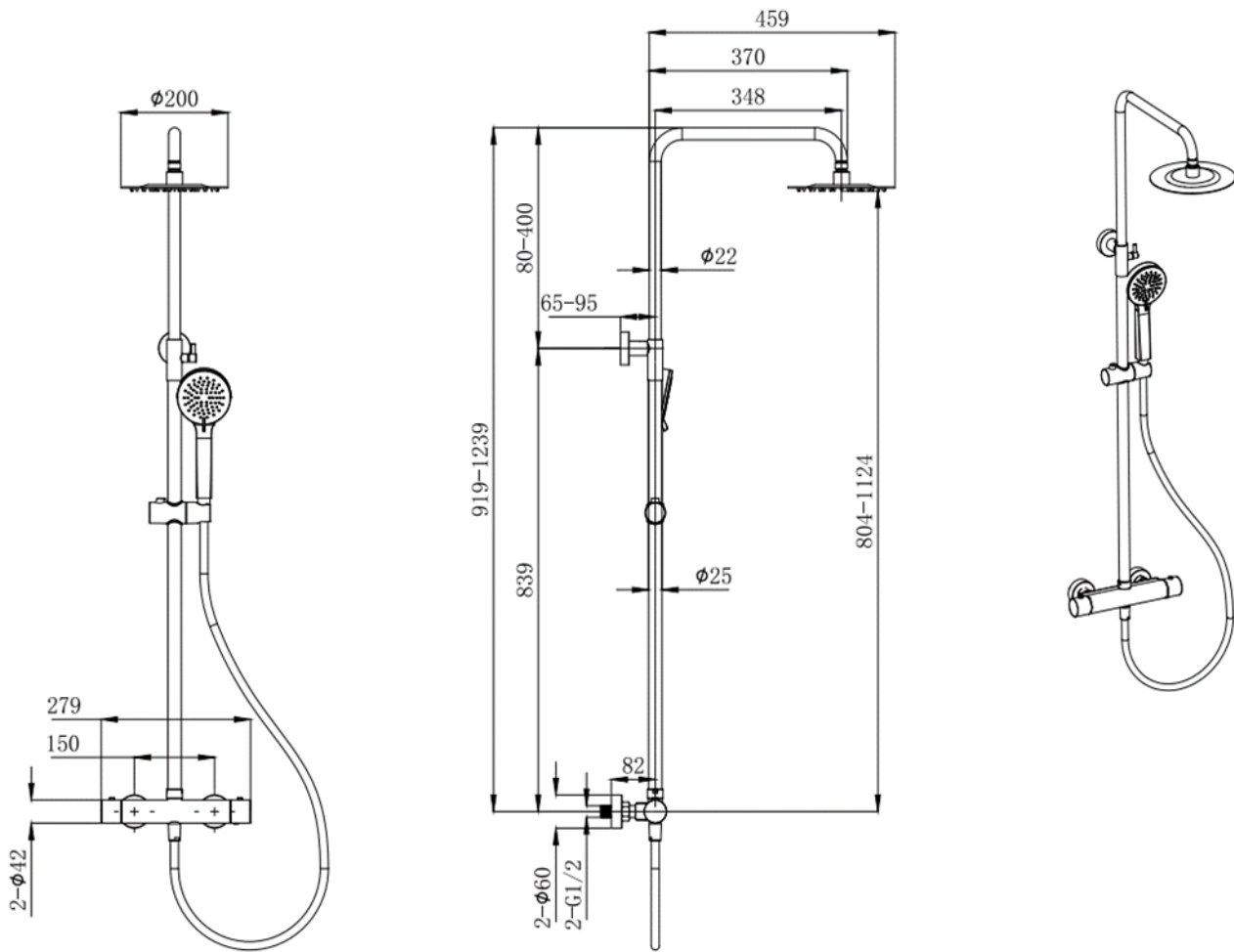


The information contained on this page was correct at the date of issue. Fitting dimensions are provided as a guide only. Some variation may occur due to manufacturing tolerances. We pursue a policy of continuing improvement in design and performance of our products and so reserve the right to change specifications without prior notice

FOR FURTHER ADVICE PLEASE CONTACT :-

SAGITTARIUS LTD UNIT 1 LOWER VICTORIA STREET—CHADDERTON—OLDHAM—OL9 9TU TEL:0616 6202029

EMAIL:TECHNICAL@SAGITTARIUSTAPS.CO.UK



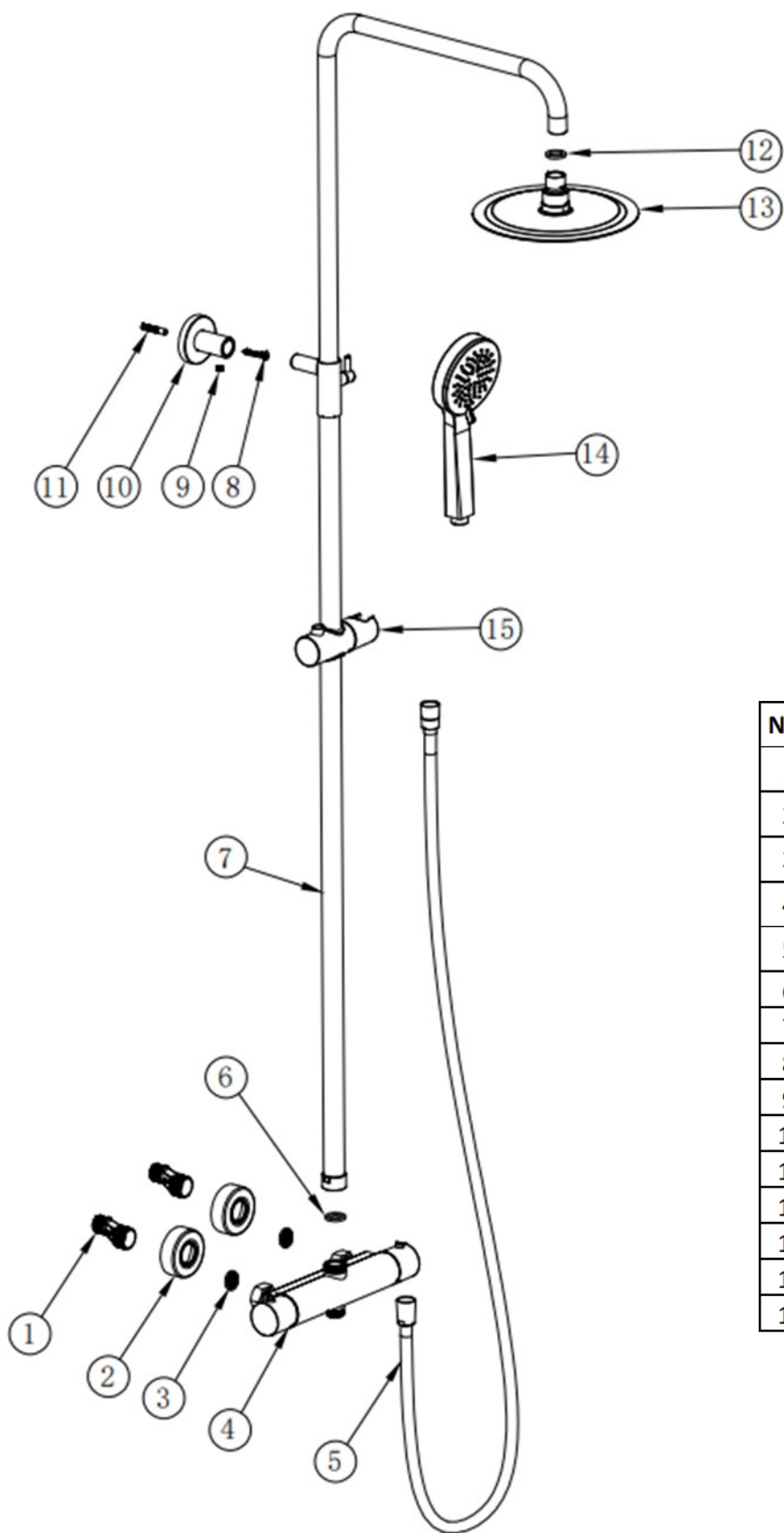
Flow Rates (Litres per minute)

System Pressure	0.1 Bar	0.2 Bar	0.3 Bar	0.5 Bar	1.0 Bar	1.5 Bar	2.0 Bar	3.0 Bar	4.0 Bar	5.0 Bar
Handset	3.1	-	5.8	7.8	11.4	-	16.5	20.2	23.3	26.1
howerhead	2.8	-	5.6	7.7	11.3	-	16.4	20.1	23.4	26.1

FOR FURTHER ADVICE PLEASE CONTACT :-

SAGITTARIUS LTD UNIT 1 LOWER VICTORIA STREET—CHADDERTON—OLDHAM—OL9 9TU TEL:0616 6202029

EMAIL:TECHNICAL@SAGITTARIUSTAPS.CO.UK



NO.	NAME	QTY.
1	S-UNION	2
2	BASE PLATE	2
3	LOCK NUT	2
4	BODY	1
5	HOSE	1
6	O-RING	1
7	RAIL	1
8	SCREW	1
9	SCREW	1
10	WALL BUCKET	1
11	SCREW	1
12	O-RING	1
13	SHOWER HEAD	1
14	HANDSET	1
15	HANDLE HOLDER	1

FOR FURTHER ADVICE PLEASE CONTACT :-

SAGITTARIUS LTD UNIT 1 LOWER VICTORIA STREET—CHADDERTON—OLDHAM—OL9 9TU TEL:0616 6202029

EMAIL:TECHNICAL@SAGITTARIUSTAPS.CO.UK