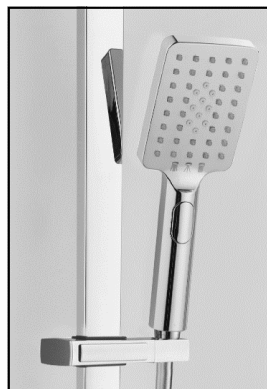


SAGITTARIUS

TAPS & SHOWERING

Construction	Brass Body (CuZn38Pb18), Zinc-alloy Handles
Finishes	Chrome (Ni : 8-12um, Cr : 0.25-0.3um)
Product Type	Contemporary
Water Pressure Tested Between	Min. 0.5 bar, Max. 6.0 bar
Standards	Complies with BSEN 1111
Certification	-
Cartridge	Thermostatic, Integrated ceramic disc flow control valve & diverter
Check Valve	Neoperl
Fitting	SS304 S-Union connectors (Male thread offset 1/2 inch x 3/4" BSP with Escutcheon)
Guarantee	10 years against manufacturing faults (excluding serviceable parts) Temperature : Pre-set 38°C , with push button override to 48°C
Additional Information	Automatic shut off in the event of hot or cold water supply failure Stainless steel adjustable riser rail Shower head : 250mm , Stainless steel Ultra slim Chrome , 3 mode SELECT , ABS handset Shower hose : Chrome , Smooth PVC , 1.5m COOL TOUCH technology

NUORO DELUXE EXPOSED VALVE & RISER KIT CHROME SS/623/C



The information contained on this page was correct at the date of issue. Fitting dimensions are provided as a guide only. Some variation may occur due to manufacturing tolerances. We pursue a policy of continuing improvement in design and performance of our products and so reserve the right to change specifications without prior notice

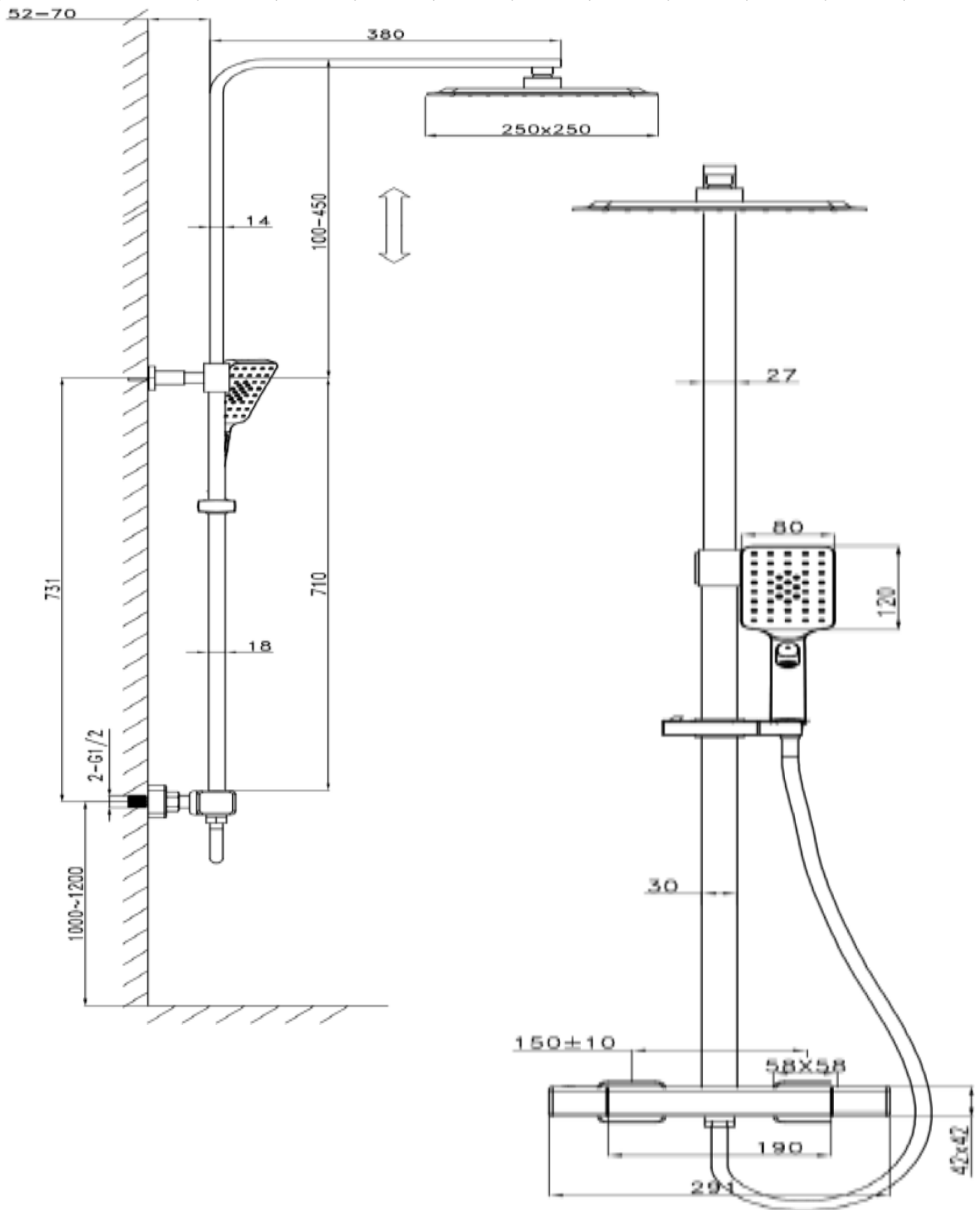
FOR FURTHER ADVICE PLEASE CONTACT :-

SAGITTARIUS LTD UNIT 1 LOWER VICTORIA STREET—CHADDERTON—OLDHAM—OL9 9TU TEL:0616 6202029

EMAIL:TECHNICAL@SAGITTARIUSTAPS.CO.UK

Flow Rates (Litres per minute)

System Pressure	0.1 Bar	0.2 Bar	0.3 Bar	0.5 Bar	1.0 Bar	1.5 Bar	2.0 Bar	3.0 Bar	4.0 Bar	5.0 Bar
38°C (L/min)	-	3.9	-	8.1	12.9	-	-	22.3	-	-



FOR FURTHER ADVICE PLEASE CONTACT :-
 SAGITTARIUS LTD UNIT 1 LOWER VICTORIA STREET—CHADDERTON—OLDHAM—OL9 9TU TEL:0616 6202029
 EMAIL:TECHNICAL@SAGITTARIUSTAPS.CO.UK

