

# SAGITTARIUS

## TAPS & SHOWERING

<b>Construction</b>	Brass Body (CuZn38Pb18); Brass Rail; Zinc-alloy Handles
<b>Finishes</b>	Chrome plated to BS EN 248
<b>Product Type</b>	Contemporary
<b>Water Pressure Tested Between</b>	Min. 0.2 bar (Handset) 0.5 bar (Shower Head), Max. 6.0 bar
<b>Standards</b>	Complies with BSEN 1111
<b>Certification</b>	WRAS approved and certified and TMV2 (Pending)
<b>Cartridge</b>	Thermostatic cartridge & Integrated Ceramic disc valve diverter
<b>Check valve</b>	0.5-10 gpm
<b>Fitting</b>	Brass Easy Fit (15mm compression connection)
<b>Guarantee</b>	10 years against manufacturing faults (excluding serviceable parts)
<b>Additional Information</b>	Temperature: Pre-set 38°C, with push button override to 48°C Automatic shut off in the event of hot or cold water supply failure Chrome Brass riser rail Thin Shower Head : Chrome , Stainless steel SS304, Aerator Induction , 250mm Handset : Chrome , ABS , 3 modes Select Button Handset holder : Chrome , ABS , adjustable height Hose : Chrome , Smooth PVC , 1.5m , G1/2" BSP COOL TOUCH technology

### CURVE EXPOSED VALVE AND RISER KIT CHROME SS/613/C

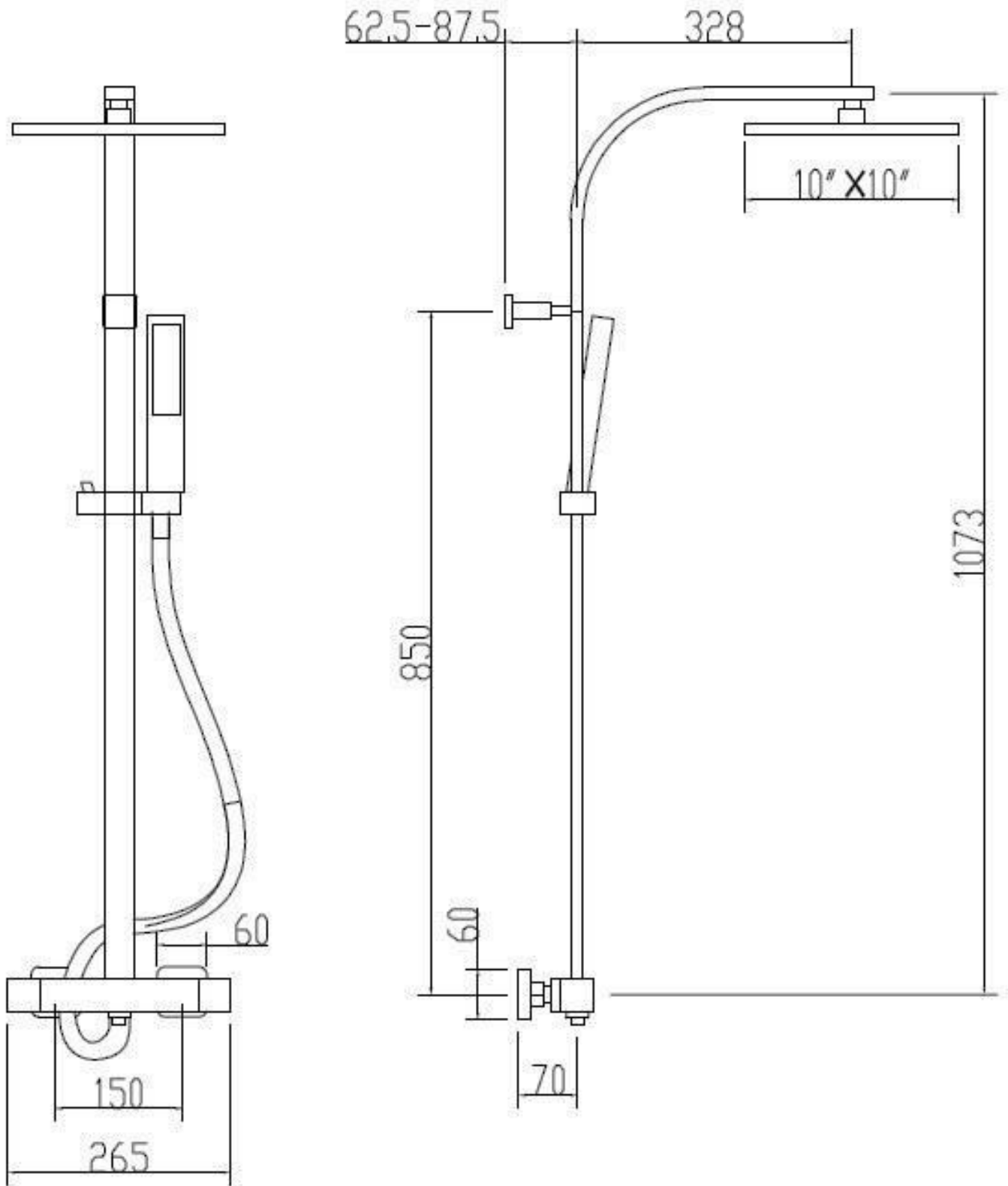


The information contained on this page was correct at the date of issue. Fitting dimensions are provided as a guide only. Some variation may occur due to manufacturing tolerances. We pursue a policy of continuing improvement in design and performance of our products and so reserve the right to change specifications without prior notice

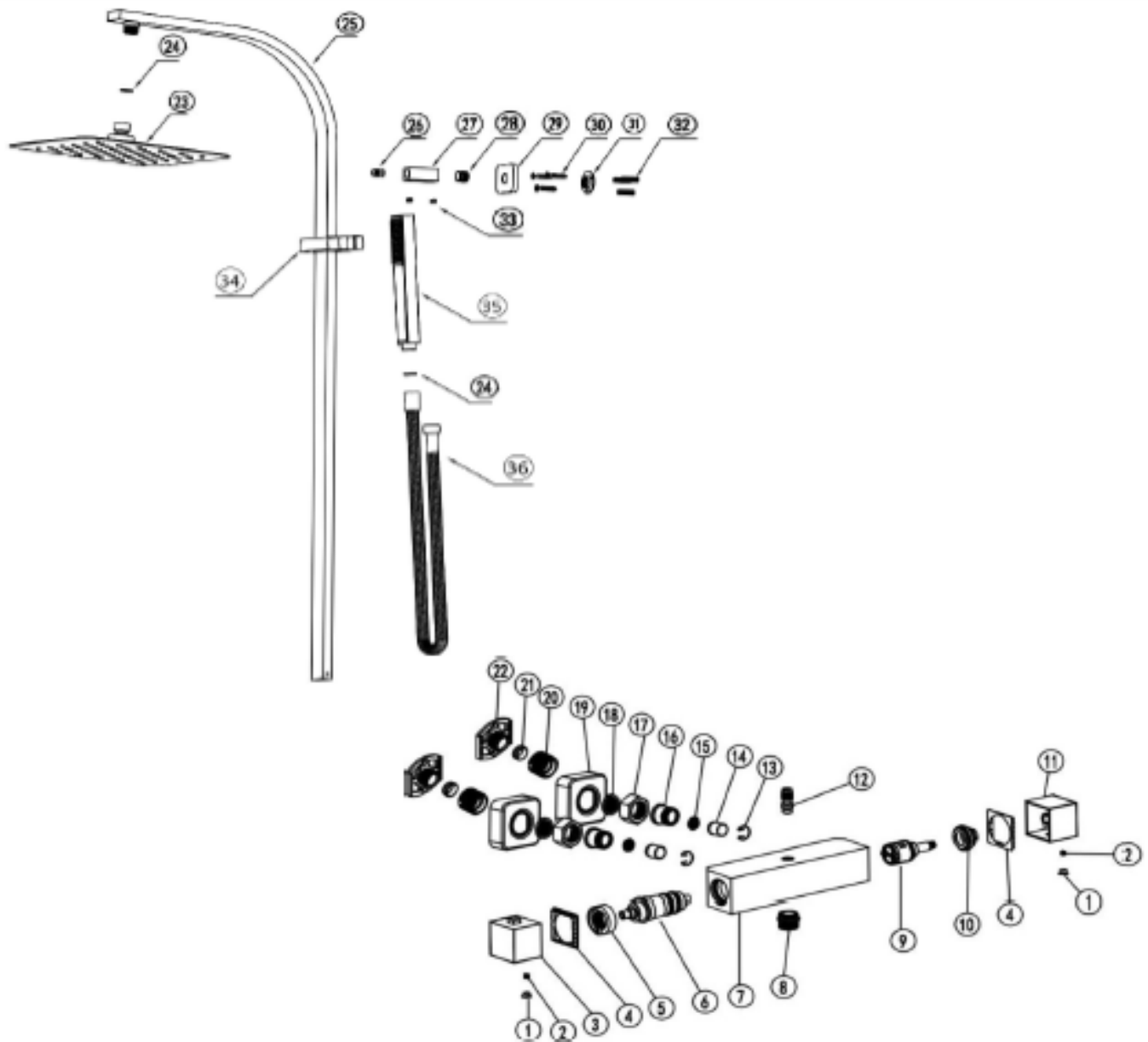
FOR FURTHER ADVICE PLEASE CONTACT :-  
SAGITTARIUS LTD UNIT 1 LOWER VICTORIA STREET—CHADDERTON—OLDHAM—OL9 9TU TEL:0616 6202029  
EMAIL:TECHNICAL@SAGITTARIUSTAPS.CO.UK

Flow Rates (Litres per minute)

System Pressure	0.1 Bar	0.2 Bar	0.3 Bar	0.5 Bar	1.0 Bar	1.5 Bar	2.0 Bar	3.0 Bar	4.0 Bar	5.0 Bar
	4.7	6.3	7.7	9.8	13.9	17.1	19.7	24.0	27.7	30.9



FOR FURTHER ADVICE PLEASE CONTACT :-  
 SAGITTARIUS LTD UNIT 1 LOWER VICTORIA STREET—CHADDERTON—OLDHAM—OL9 9TU TEL:0616 6202029  
 EMAIL:TECHNICAL@SAGITTARIUSTAPS.CO.UK



18	FILTER WASHER	2	36	SHOWER HOSE	1
17	HEXNUT	2	35	HANDSET	1
16	CONNECTOR	2	34	HANDSET HOLDER	1
15	FILTER	2	33	SCREW	4
14	CHECK VALVE	2	32	RUBBER PLUGS	3
13	CIRCLIP	2	31	FIXING NUT	1
12	CONNECTOR	1	30	SCREW	3
11	ON/OFF HANDLE	1	29	COVER PLATE	1
10	GLAND	1	28	FITTING CONNECTOR	1
9	ON/OFF CARTRIDGE	1	27	CYLINDER TUBE	1
8	G1/2 CONNECTOR	1	26	WALL BRACKET CONNECTOR	1
7	BODY	1	25	RAIL	1
6	THERMOSTATIC CARTRIDGE	1	24	WASHER	2
5	THERMOSTATIC STOP RING	1	23	SHOWER HEAD	1
4	WEAR RING	2	22	FIXING BASE	2
3	THERMOSTATIC HANDLE	1	21	COPPER BUSH	2
2	SCREW	2	20	INLET CONNECTOR	2
1	CAP	2	19	COVER PLATE	2
No.	DESCRIPTION	QTY	No.	DESCRIPTION	QTY

FOR FURTHER ADVICE PLEASE CONTACT :-

SAGITTARIUS LTD UNIT 1 LOWER VICTORIA STREET—CHADDERTON—OLDHAM—OL9 9TU TEL:0616 6202029

EMAIL:TECHNICAL@SAGITTARIUSTAPS.CO.UK