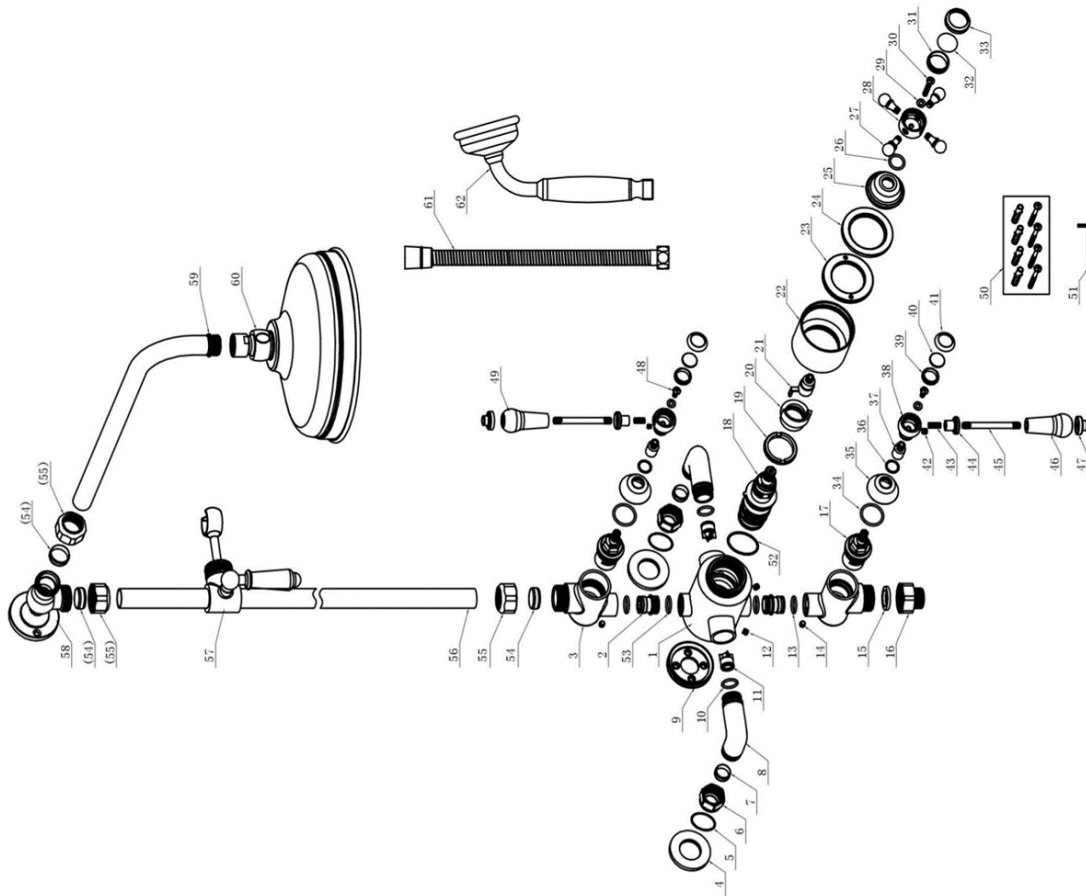




# SAGITTARIUS



NO.	ITEM CODE	DESCRIPTION	QTY	MATERIAL
1	142024-01	BODY	1	HP959-1
2	142024-06B	Connector	2	HP957-3
3	142024-02	BODY	2	HP959-1
4	142024-16A	Cover	2	HP957-3
5	28x2	O RING	2	NBR
6	142024-07	Nut	2	HP957-3
7	17350-36	Card set	2	T2
8	142024-06A	Connector	2	HP957-3
9	142024-20	Fixed base	1	HP957-3
10	21752-2	O RING	4	EPDM
11	143004-09	check valve	2	Assembly
12	95x5	screw	2	304
13	25x2	O RING	2	EPDM
14	95x6	screw	2	304
15	29x2x11.5x2.5	filter	1	EPDM+SUS304
16	142034-06	Connector	1	HP957-3
17	147052-08	Cartridge	2	Assembly
18	H102V	cartridge	1	Assembly
19	147052-07	Mounting Nut	1	HP957-3
20	147052-88B	washer	1	ABS
21	142024-19	Connector	1	HP957-3
22	142034-16	Cover	1	HP957-3
23	142034-15	Mounting Nut	1	HP957-3
24	142034-29	Ceramic	1	Ceramic
25	142034-07	Cover	1	HP957-3
26	21x2	O RING	1	NBR
27	142034-14	Lever rod	4	HP957-3
28	142034-03	Handle	3	HP957-3
29		washer	3	304
30	M4x8	screw	1	304
31	16007-16N	Mounting Nut	1	HP957-3
32	142024-29	Ceramic	1	Ceramic
33	16007-16W	Cover	1	HP957-3
34	28x2	O RING	2	NBR
35	142034-16A	Cover	2	HP957-3
36	25x15	O RING	2	NBR
37	142034-19	Connector	2	HP957-3
38	142034-03A	Handle	2	HP957-3
39	142034-07B	Mounting Nut	2	HP957-3
40	142034-29A	Ceramic	2	Ceramic
41	142034-07A	Cover	2	HP957-3
42	96x4	screw	2	304
43	95x16	screw	2	304
44	142024-07B	Connector	2	HP957-3
45	142024-14	Pole	2	304
46	142024-04A	Ceramic handle	1	Ceramic
47	142024-07A	Cover	2	HP957-3
48	M5x8	screw	2	304
49	142024-04	Ceramic handle	1	Ceramic
50	17368-25	Fixed part	1	304+PE
51	24x2	O RING	1	304
52	21x2	O RING	1	NBR
53	25x2x2.4	O RING	2	EPDM
54	5705-30	Card set	3	T2
55	5705-07	Nut	3	HP957-3
56	5705-38	Pole	1	201
57	A610A	Shower holder	1	HP957-3
58	5705-01	BODY	1	Assembly
59	5705-38A	Pole	1	201
60	4201-43	ROUND HEADSHOWER	1	HP959-1
61	A408	15M SHOWER HOS	1	304
62	5317	ROUND HANDSHOWER	1	Assembly

FOR FURTHER ADVICE PLEASE CONTACT :-

SAGITTARIUS LTD 1 LOWER VICTORIA STREET—CHADDERTON—OLDHAM—OL9 9TU TEL:0161 6202029

EMAIL:TECHNICAL@SAGITTARIUSTAPS.CO.UK