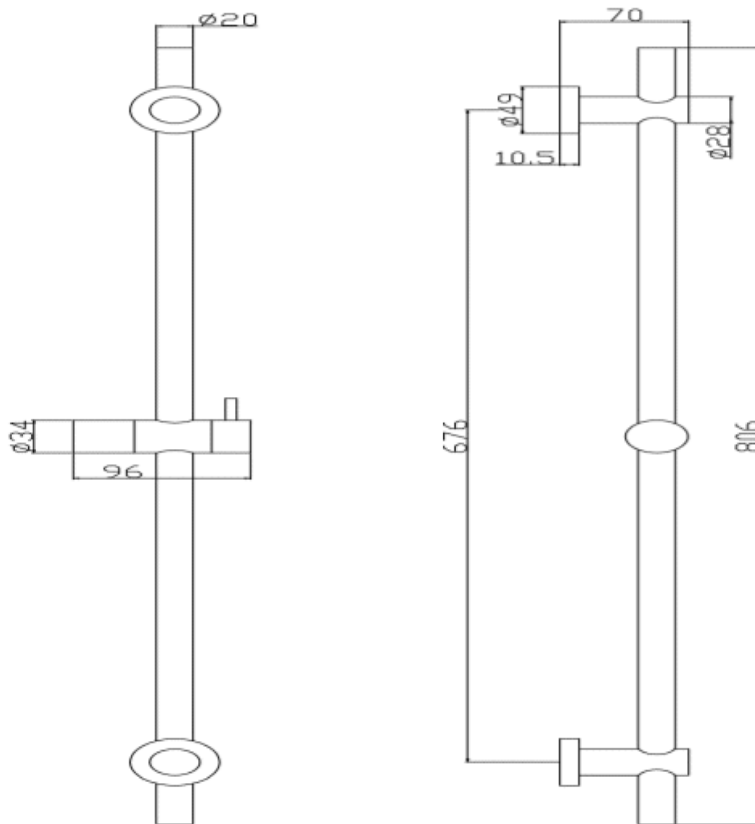


# SAGITTARIUS

## TAPS & SHOWERING

<b>Construction</b>	Brass, Stainless steel & ABS
<b>Finishes</b>	Chrome (Ni : 8-12um, Cr : 0.25-0.3um)
<b>Product Type</b>	Contemporary
<b>Water Pressure</b>	Min. 1.0 bar, Max. 6.0 bar
<b>Plumbing Systems</b>	Suitable for all plumbing systems
<b>Certification</b>	-
<b>Guarantee</b>	1 year against manufacturing faults (excluding serviceable parts)
<b>Additional Information</b>	Chrome Brass 800mm Rail Chrome ABS Select Button 3 modes Shower handset Chrome adjustable Brass & ABS handset holder Chrome 1.5m smooth PVC shower hose

### NARNI SLIDE RAIL KIT CHROME SRK/549/C

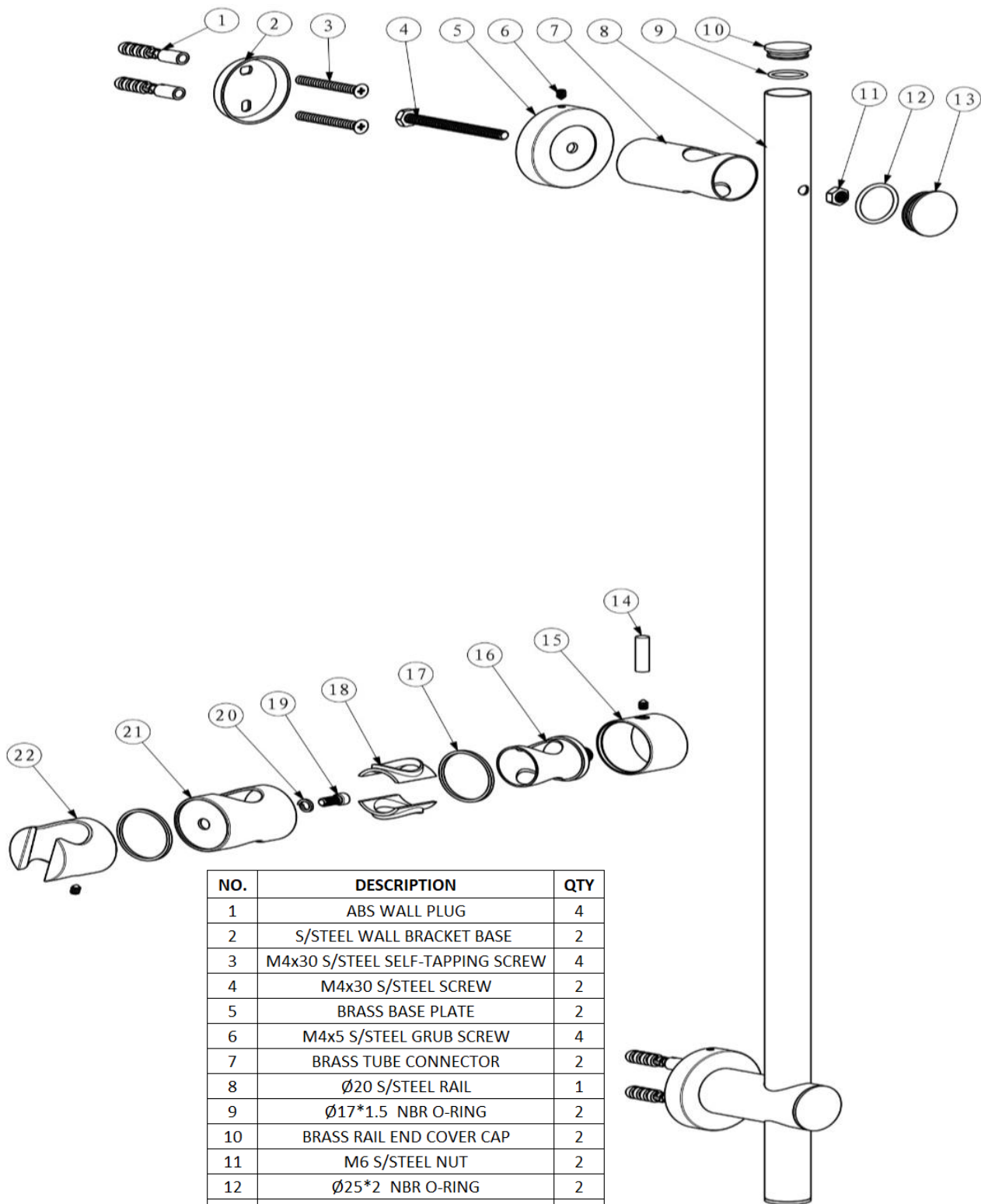


The information contained on this page was correct at the date of issue. Fitting dimensions are provided as a guide only. Some variation may occur due to manufacturing tolerances. We pursue a policy of continuing improvement in design and performance of our products and so reserve the right to change specifications without prior notice

FOR FURTHER ADVICE PLEASE CONTACT :-

SAGITTARIUS LTD UNIT 1 LOWER VICTORIA STREET—CHADDERTON—OLDHAM—OL9 9TU TEL:0616 6202029

EMAIL:TECHNICAL@SAGITTARIUSTAPS.CO.UK



NO.	DESCRIPTION	QTY
1	ABS WALL PLUG	4
2	S/STEEL WALL BRACKET BASE	2
3	M4x30 S/STEEL SELF-TAPPING SCREW	4
4	M4x30 S/STEEL SCREW	2
5	BRASS BASE PLATE	2
6	M4x5 S/STEEL GRUB SCREW	4
7	BRASS TUBE CONNECTOR	2
8	Ø20 S/STEEL RAIL	1
9	Ø17*1.5 NBR O-RING	2
10	BRASS RAIL END COVER CAP	2
11	M6 S/STEEL NUT	2
12	Ø25*2 NBR O-RING	2
13	BRASS DECORATIVE COVER	2
14	BRASS HANDLE ROD	1
15	BRASS HANDLE BODY	1
16	ABS HANDSET HOLDER INSERT	1
17	Ø32*Ø29*1.5 POM WASHER	2
18	ABS GREY WASHER	2
19	M6x10 S/STEEL GRUB SCREW	1
20	S/STEEL CIRCLIP	1
21	BRASS HANDSET HOLDER BODY	1
22	ABS HANDSET HOLDER BRACKET	1

FOR FURTHER ADVICE PLEASE CONTACT :-  
 SAGITTARIUS LTD UNIT 1 LOWER VICTORIA STREET—CHADDERTON—OLDHAM—OL9 9TU TEL:0616 6202029  
 EMAIL:TECHNICAL@SAGITTARIUSTAPS.CO.UK