

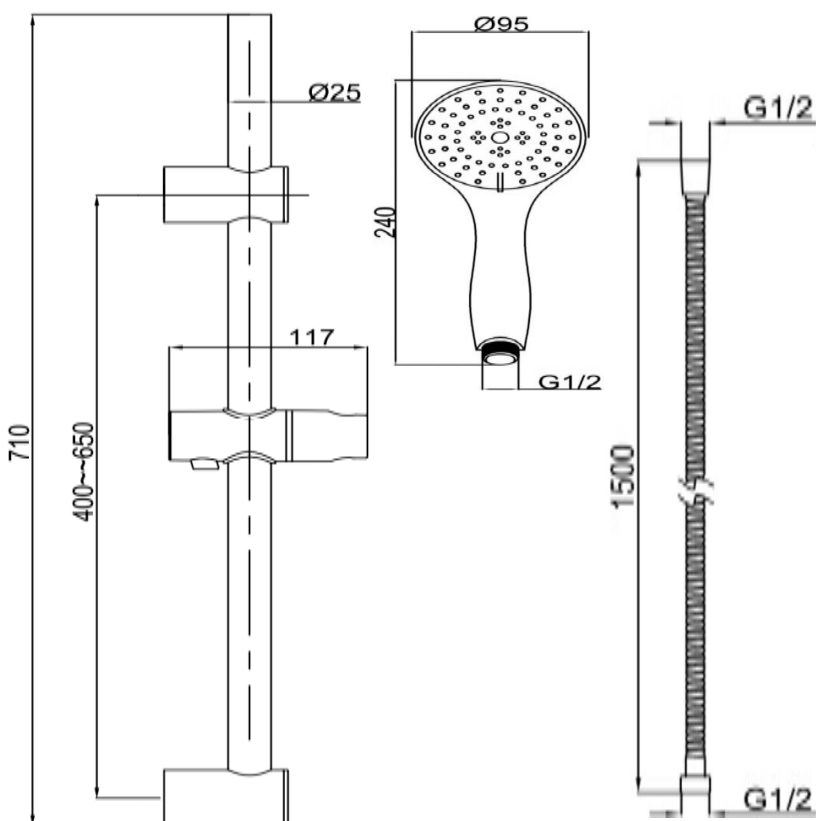
SAGITTARIUS

TAPS & SHOWERING

Construction	Stainless steel & ABS
Finishes	Matt Black
Product Type	Contemporary
Water Pressure Tested Between	Min 1.0 bar and Max 5.0 bar
Packaging	73 x 33.5 x 44.5cm / carton (10 boxes), Dimension: 72 x 15 x 8.5cm Weight: 0.86Kg / box
Guarantee	1 year against manufacturing faults (excluding serviceable parts)
Additional Information	Matt black Stainless steel 710mm Rail Matt black adjustable ABS Handset holder Matt black ABS 3 modes Shower handset, G1/2" BSP Matt black Stainless steel 1.5m hose, G1/2" BSP

INFINITY 3 MODE SLIDE RAIL KIT BLACK

SRK532B



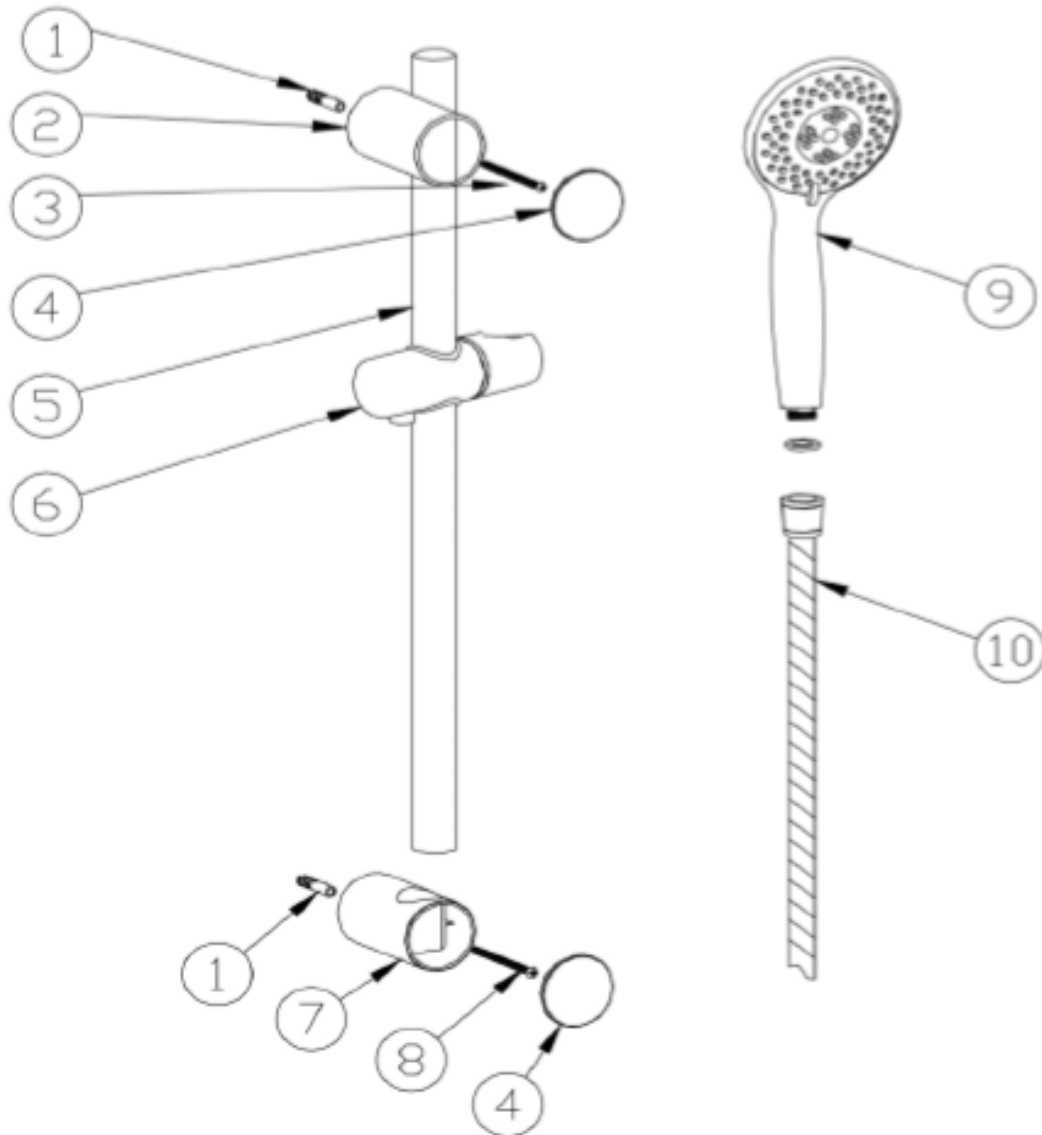
Adjustable
FIXING BRACKETS
Ideal for replacing
existing slide rail kit

The information contained on this page was correct at the date of issue. Fitting dimensions are provided as a guide only. Some variation may occur due to manufacturing tolerances. We pursue a policy of continuing improvement in design and performance of our products and so reserve the right to change specifications without prior notice

FOR FURTHER ADVICE PLEASE CONTACT :-
SAGITTARIUS LTD UNIT 1 LOWER VICTORIA STREET—CHADDERTON—OLDHAM—OL9 9TU TEL:0616 6202029
EMAIL:TECHNICAL@SAGITTARIUSTAPS.CO.UK

Flow Rates (Litres per minute)

System Pressure	0.1 Bar	0.2 Bar	0.3 Bar	0.5 Bar	1.0 Bar	1.5 Bar	2.0 Bar	3.0 Bar	4.0 Bar	5.0 Bar
	-	3.3	-	4.2	5.5	7.0	8.0	9.2	-	-



NO.	ITEM	QTY
1	WALL PLUG	2
2	UPPER RAIL BRACKET	1
3	SCREW	1
4	COVER CAP	2
5	STAINLESS STEEL RAIL	1
6	ABS HANDSET HOLDER	1
7	LOWER RAIL BRACKET	1
8	SCREW	1
9	ABS SHOWER HANDSET	1
10	1.5M S/STEEL SHOWER HOSE	1

FOR FURTHER ADVICE PLEASE CONTACT :-

SAGITTARIUS LTD UNIT 1 LOWER VICTORIA STREET—CHADDERTON—OLDHAM—OL9 9TU TEL:0616 6202029

EMAIL:TECHNICAL@SAGITTARIUSTAPS.CO.UK