

SAGITTARIUS

TAPS & SHOWERING

Construction Brass

Finishes Chrome plated to BS EN 248

Product Type Contemporary

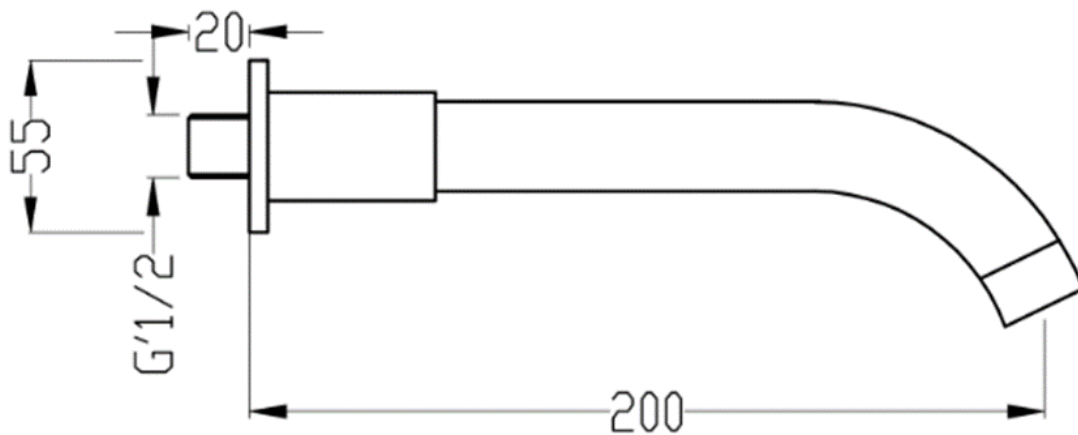
Water Pressure Tested Between Min. 0.2 bar, Max. 6.0 bar

Fitting Brass G1/2" BSP Female thread

Guarantee 1 year against manufacturing faults (excluding serviceable parts)

**180mm ½" WALL SPOUT AND
ROUND PLATE CHROME**

SP/020/C



Flow Rates (Litres per minute)

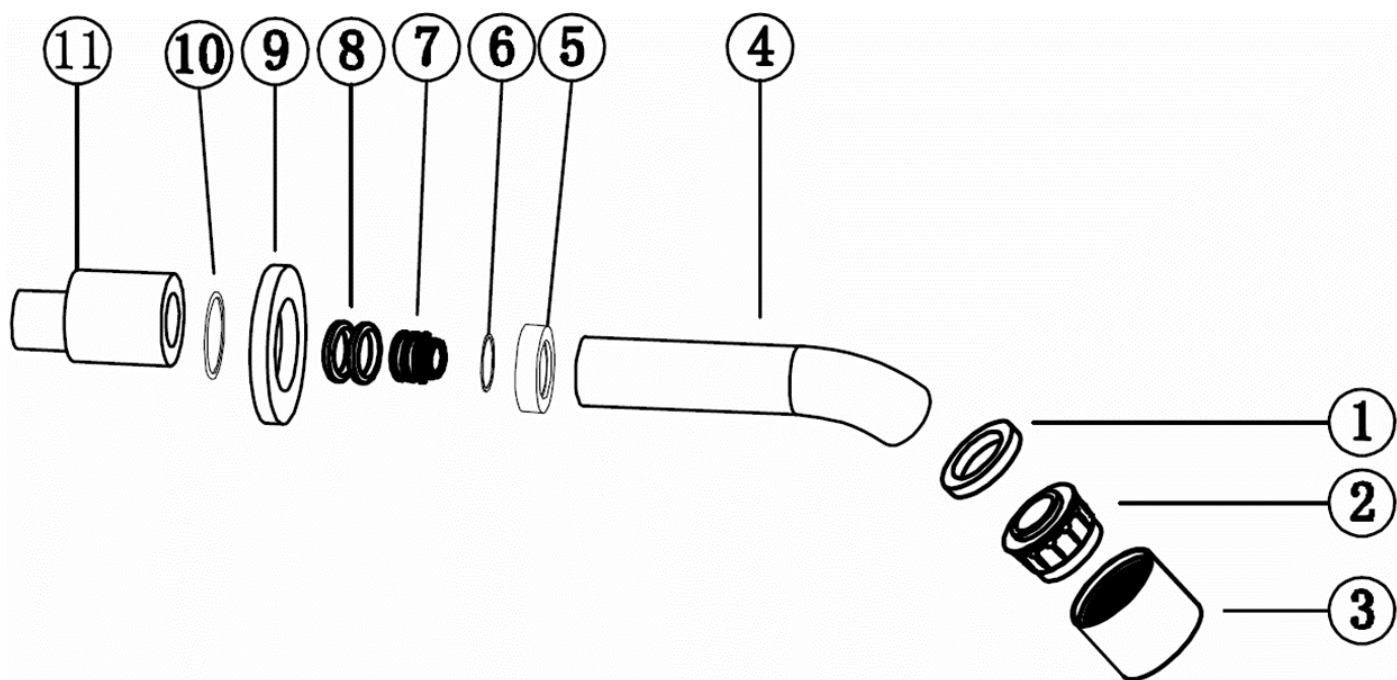
System Pressure	0.1 Bar	0.2 Bar	0.3 Bar	0.5 Bar	1.0 Bar	1.5 Bar	2.0 Bar	3.0 Bar	4.0 Bar	5.0 Bar
	-	-	-	-	-	-	-	-	-	-

The information contained on this page was correct at the date of issue. Fitting dimensions are provided as a guide only. Some variation may occur due to manufacturing tolerances. We pursue a policy of continuing improvement in design and performance of our products and so reserve the right to change specifications without prior notice

FOR FURTHER ADVICE PLEASE CONTACT :-

SAGITTARIUS LTD UNIT 1 LOWER VICTORIA STREET—CHADDERTON—OLDHAM—OL9 9TU TEL:0616 6202029

EMAIL:TECHNICAL@SAGITTARIUSTAPS.CO.UK



11	BASE PLATE (TAIL)	1
10	O-RING	1
9	BASE RING	1
8	O-RING	1
7	NUT	1
6	RUBBER SEAL	1
5	COVER RING	1
4	SPOUT	1
3	AERATOR CAP	1
2	AERATOR	1
1	WASHER	1
No.	DESCRIPTION	QTY