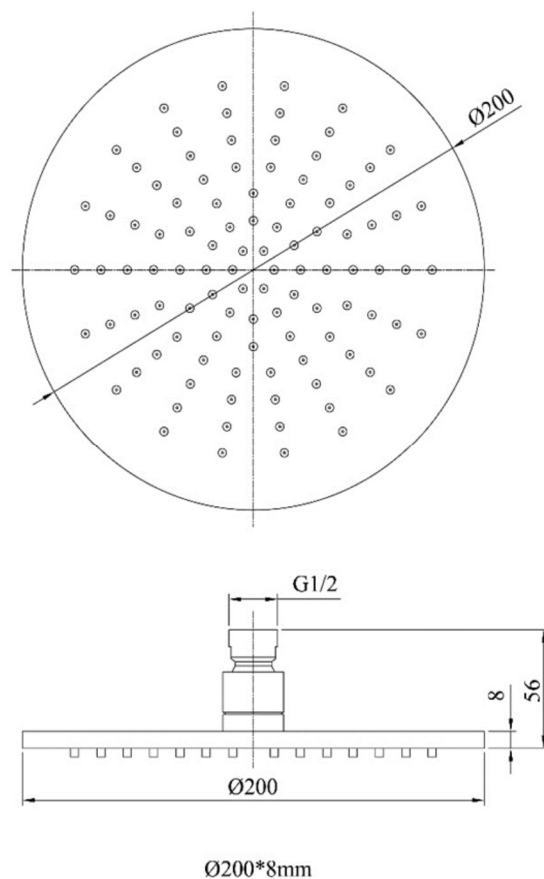


SAGITTARIUS

TAPS & SHOWERING

Construction	Brass (CuZn38Pb18)
Finishes	Chrome plated to BS EN 248
Product Type	Contemporary
Water Pressure	Min 0.2bar and Max 7.0bar
Plumbing Systems	Suitable for high water pressure 15 bar
Certification	Manufactured to comply with WRAS
Size	Ø200mm
Fitting	G1/2"
Packaging	45x24x40cm/carton(10pcs), Box size: 22x22x8.5cm, Weight: 0.98kg
Guarantee	1 year against manufacturing faults (excluding serviceable parts).
Additional Information	1. Rub-clean rubber nozzle 2. 100% Chromed 3. Swivel connector

DRENCH 200mm FIXED HEAD & ARM CHROME SH/348/C



System Pressure	0.1 Bar	0.2 Bar	0.3 Bar	0.5 Bar	1.0 Bar	1.5 Bar	2.0 Bar	3.0 Bar	4.0 Bar	5.0 Bar
SH/348/C	7.0	8.6	12.3	15.7	17.5	19.3	21.6	24.5	27.4	32.0

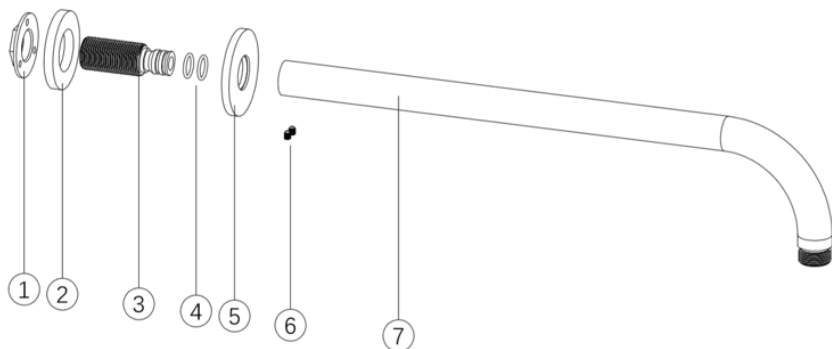
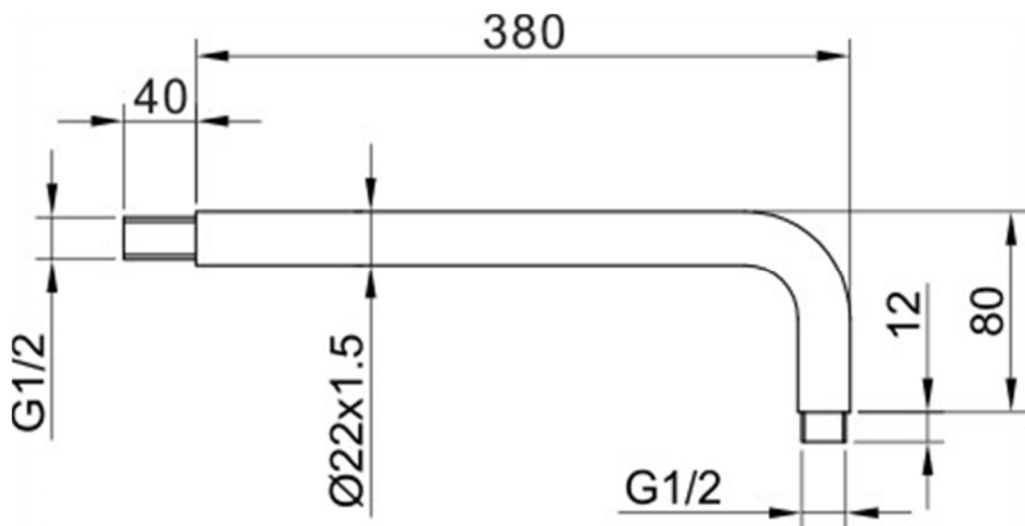
The information contained on this page was correct at the date of issue. Fitting dimensions are provided as a guide only. Some variation may occur due to manufacturing tolerances. We pursue a policy of continuing improvement in design and performance of our products and so reserve the right to change specifications without prior notice

FOR FURTHER ADVICE PLEASE CONTACT :-

SAGITTARIUS LTD UNIT 1 LOWER VICTORIA STREET—CHADDERTON—OLDHAM—OL9 9TU TEL:0616 6202029

EMAIL:TECHNICAL@SAGITTARIUSTAPS.CO.UK

Construction	Brass Body (CuZn38Pb18)
Finishes	Chrome plated to BS EN 248
Product Type	Contemporary
Plumbing Systems	Suitable for all plumbing systems
Certification	-
Fitting	G1/2" BSP
Packaging	53.5 x 47 x 38cm / carton (50 boxes / carton)
Guarantee	5 years against manufacturing faults (excluding serviceable parts).



7	BODY	1
6	SCREW	2
5	BASE PLATE	1
4	O-RING	2
3	CONNECTOR	1
2	WASHER	1
1	BACK NUT	1
No.	DESCRIPTION	QTY

The information contained on this page was correct at the date of issue. Fitting dimensions are provided as a guide only. Some variation may occur due to manufacturing tolerances. We pursue a policy of continuing improvement in design and performance of our products and so reserve the right to change specifications without prior notice

FOR FURTHER ADVICE PLEASE CONTACT :-
SAGITTARIUS LTD UNIT 1 LOWER VICTORIA STREET—CHADDERTON—OLDHAM—OL9 9TU TEL:0616 6202029
EMAIL:TECHNICAL@SAGITTARIUSTAPS.CO.UK