

SAGITTARIUS

TAPS & SHOWERING

Construction	Brass Body, Brass Standpipe; Zinc-alloy Handle; Stainless steel Base plate
Finishes	Matt Black
Product Type	Contemporary
Water Pressure Tested	Min. 0.2 bar (handset) 1.5 bar (spout),
Standards	Complies with BS5412, BS EN200
Cartridge	35mm Ceramic disc cartridge
Aerator	M24*1 Spout aerator
Fitting	M10 & M15 Flexible inlet connection hoses
Guarantee	5 years against manufacturing faults (excluding serviceable parts)
Additional Information	Supplied with Matt black single mode ABS Shower handset & 1.5m smooth PVC shower hose

RAVENNA FREESTANDING BATH SHOWER MIXER RA/174/B

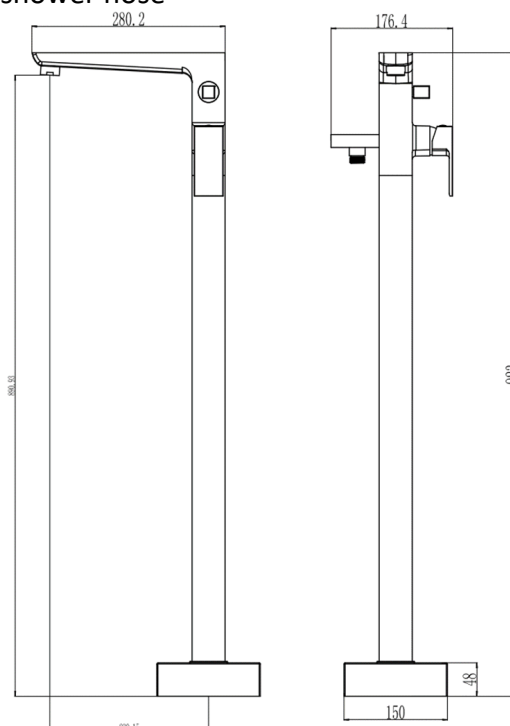
Operating Water Pressure



COMBI BOILER
1.2 - 1.5+ bar



HIGH PRESSURE
1.2 - 1.5+ bar



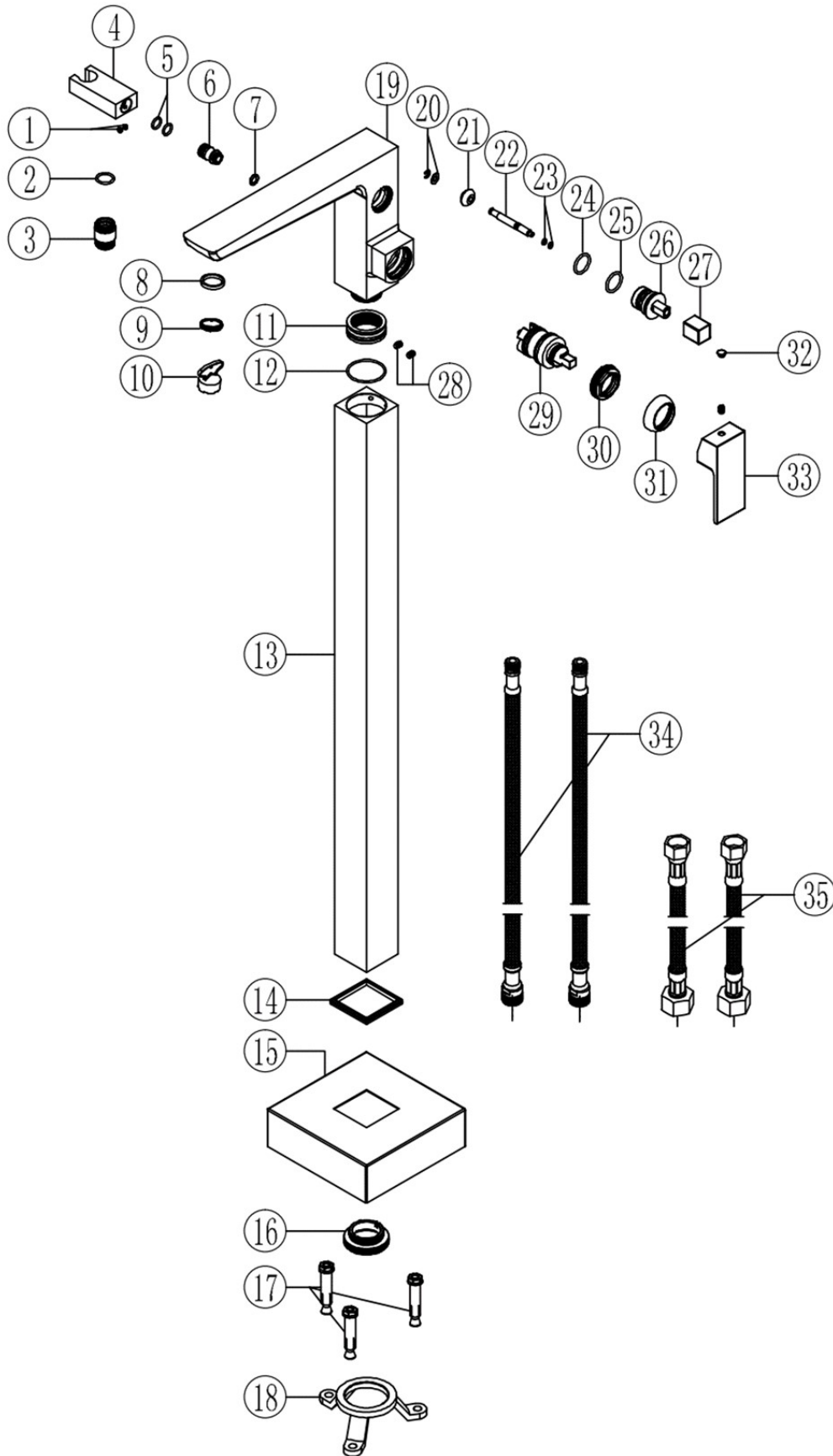
The information contained on this page was correct at the date of issue.
a guide only. Some variation may occur due to manufacturing tolerances. We pursue a policy of continuing improvement in design and performance of our products and so reserve

Fitting dimensions are provided as

FOR FURTHER ADVICE PLEASE CONTACT :-
SAGITTARIUS LTD UNIT 1 LOWER VICTORIA STREET—CHADDERTON—OLDHAM—OL9 9TU TEL:0616 6202029
EMAIL:TECHNICAL@SAGITTARIUSTAPS.CO.UK

Flow Rates (Litres per minute)

System Pressure	0.1 Bar	0.2 Bar	0.3 Bar	0.5 Bar	1.0 Bar	1.5 Bar	2.0 Bar	3.0 Bar	4.0 Bar	5.0 Bar
	-	4.8	-	7.5	10.7	12.6	14.9	17.8	-	-



No.	DESCRIPTION	QTY
1	M4*4 GRUB SCREW	2
2	Ø20*2 NBR O-RING	1
3	G1/2" HANSET CONNECTOR	1
4	BRASS HANDSET HOLDER	1
5	Ø14*2 NBR O-RING	2
6	12*1 BRASS CONNECTOR	1
7	Ø10*2 NBR O-RING	1
8	Ø25*Ø21*3.5 SPOUT WASHER	1
9	M24*1 ABS AERATOR	1
10	M24*1 AERATOR REMOVAL KEY	1
11	M32X1.5 BRASS SPOUT CONNECTOR	1
12	Ø38*2 NBR O-RING	1
13	48*48 BRASS STANDPIPE	1
14	NBR STANDPIPE WASHER	1
15	S/STEEL SQUARE BASE PLATE	1
16	BRASS TWO-HEADED CONNECTOR	1
17	M8*60 S/STEEL ANCHOR BOLT	3
18	BRASS 3 LEG FLOOR ANCHOR	1
19	BRASS TAP BODY	1
20	S/STEEL WASHER	1
21	NBR DIVERTER WASHER	1
22	M5*63 BRASS DIVERTER STEM	1
23	Ø7*1.9 NBR O-RING	2
24	Ø24*2.4 NBR O-RING	1
25	Ø26*2.4 NBR O-RING	1
26	M24*1.5 BRASS DIVERTER	1
27	M5 BRASS SQUARE DIVERTER CAP	1
28	M5*6 S/STEEL GRUB SCREW	2
29	35mm CERAMIC DISC CARTRIDGE	1
30	35mm BRASS CARTRIDGE LOCK NUT	1
31	35mm ABS HANDLE COLLAR	1
32	HANDLE GRUB SCREW & COVER CAP	1
33	42 ZINC-ALLOY SQUARE HANDLE	1
34	M10*1*750mm FLEXITAIL	2
35	M15*1*1/2*110mm FLEXITAIL	2

FOR FURTHER ADVICE PLEASE CONTACT :-
 SAGITTARIUS LTD UNIT 1 LOWER VICTORIA STREET—CHADDERTON—OLDHAM—OL9 9TU TEL:0616 6202029
 EMAIL:TECHNICAL@SAGITTARIUSTAPS.CO.UK