

SAGITTARIUS

TAPS & SHOWERING

RAVENNA MATT BLACK TALL MONO BASIN MIXER RA/109/B

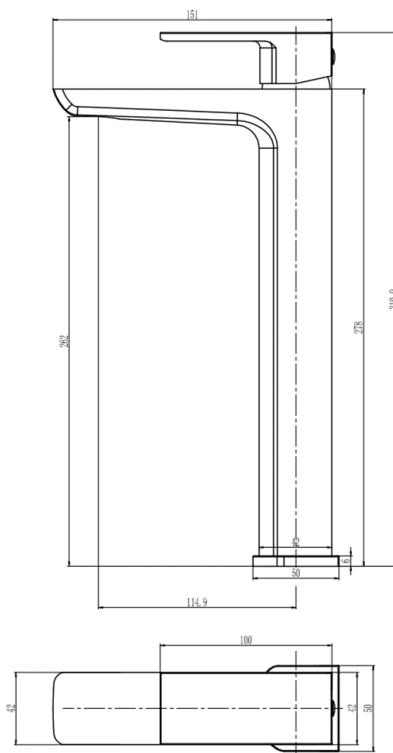
Construction	Brass Body; Zinc-alloy Handle
Finishes	Matt Black
Product Type	Contemporary
Water Pressure Tested Between	Min. 0.2 bar, Max. 6.0 bar
Cartridge	35mm Ceramic disc cartridge
Fitting	UK: M10 x 350mm G½" BSP Female Flexi Tails EU: M10 x 350mm G3/8" BSP Female Flexi Tails
Aerator	M24*1 Spout aerator
Guarantee	5 years against manufacturing faults (excluding serviceable parts)
Operating Water Pressures	



COMBI BOILER
1.2 - 1.5+ bar



HIGH PRESSURE
1.2 - 1.5+ bar



The information contained on this page was correct at the date of issue. Fitting dimensions are provided as a guide only. Some variation may occur due to manufacturing tolerances. We pursue a policy of continuing improvement in design and performance of our products and so reserve the right to change specifications without prior notice

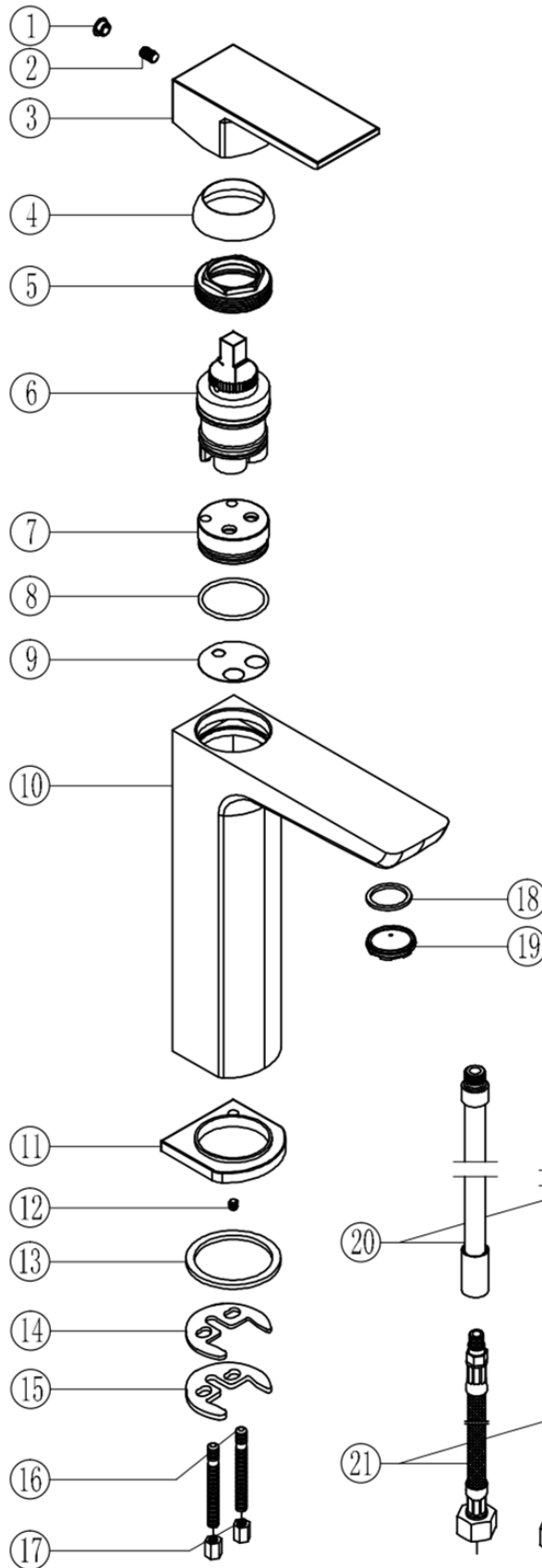
FOR FURTHER ADVICE PLEASE CONTACT :-

SAGITTARIUS LTD UNIT 1 LOWER VICTORIA STREET—CHADDERTON—OLDHAM—OL9 9TU TEL:0616 6202029

EMAIL:TECHNICAL@SAGITTARIUSTAPS.CO.UK

Flow Rates (Litres per minute)

System Pressure	0.1 Bar	0.2 Bar	0.3 Bar	0.5 Bar	1.0 Bar	1.5 Bar	2.0 Bar	3.0 Bar	4.0 Bar	5.0 Bar
	-	4.6	-	7.2	10.4	12.4	14.6	17.5	-	-



No.	DESCRIPTION	QTY
1	Ø6.8 ABS COVER CAP	1
2	M5*8 S/S GRUB SCREW	1
3	ZINC-ALLOY HANDLE	1
4	BRASS HANDLE COLLAR	1
5	BRASS CATRIDGE LOCK NUT	1
6	35mm CERAMIC DISC CARTRIDGE	1
7	M10x1 CARTRIDGE BASE	1
8	34*2 NBR O-RING	1
9	0.3 S/STEEL WASHER	1
10	BRASS TAP BODY	1
11	ZINC-ALLOY BASE PLATE	1
12	M4*8 S/S GRUB SCREW	1
13	46*38*2.5 NBR BASE PLATE WASHER	1
14	HORSE-SHOE WASHER	1
15	HORSE-SHOE PLATE	1
16	M6*70 STEEL FIXING ROD	2
17	SW9*12 BRASS FIXING NUT	2
18	23*16*3 NBR AERATOR WASHER	1
19	M24*1 AERATOR	1
20	M10*1 COPPER PIPE	2
21	M10*1*G1/2*400 FLEXI-TAILS	2

FOR FURTHER ADVICE PLEASE CONTACT :-

SAGITTARIUS LTD UNIT 1 LOWER VICTORIA STREET—CHADDERTON—OLDHAM—OL9 9TU TEL:0616 6202029

EMAIL:TECHNICAL@SAGITTARIUSTAPS.CO.UK