

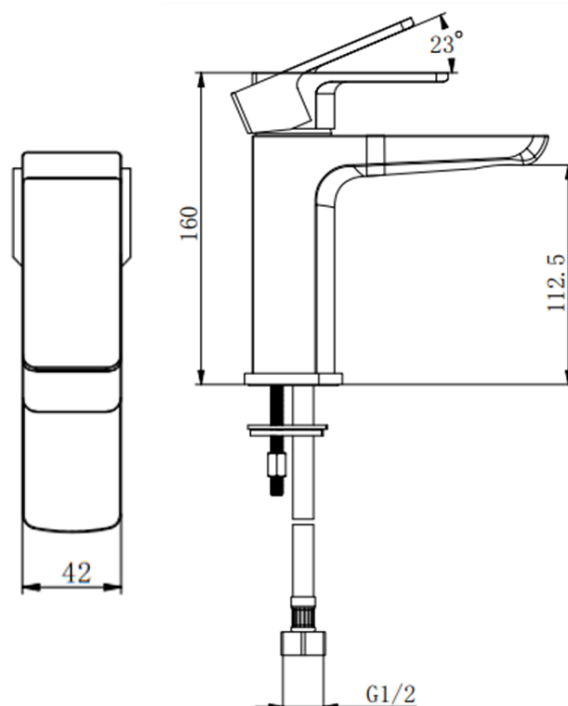
SAGITTARIUS

TAPS & SHOWERING

RAVENNA MONO BASIN MIXER

RA/106

Construction	Brass Body, Zinc-alloy Handle
Finishes	Chrome (Ni : 8-12um, Cr : 0.25-0.3um)
Product Type	Contemporary
Water Pressure Tested Between Standards	Min. 0.1 bar, Max. 6.0 bar Complies with BS6920, BS EN200
Certification	WRAS approved
Cartridge	35mm Ceramic disc cartridge
Fitting	UK: M10 x 350mm G½" BSP Female Flexi Tails EU: M10 x 350mm G3/8" BSP Female Flexi Tails
Aerator	M24*1 Spout aerator
Guarantee	10 years against manufacturing faults (excluding serviceable parts)
Additional Information	Supplied with G1¼" slotted sprung waste (UK only)



LOW PRESSURE
0.2-0.5 bar



COMBI BOILER



HIGH PRESSURE
1.2-1.5+ bar

The information contained on this page was correct at the date of issue. Fitting dimensions are provided as a guide only. Some variation may occur due to manufacturing tolerances. We pursue a policy of continuing improvement in design and performance of our products and so reserve the right to change specifications without prior notice

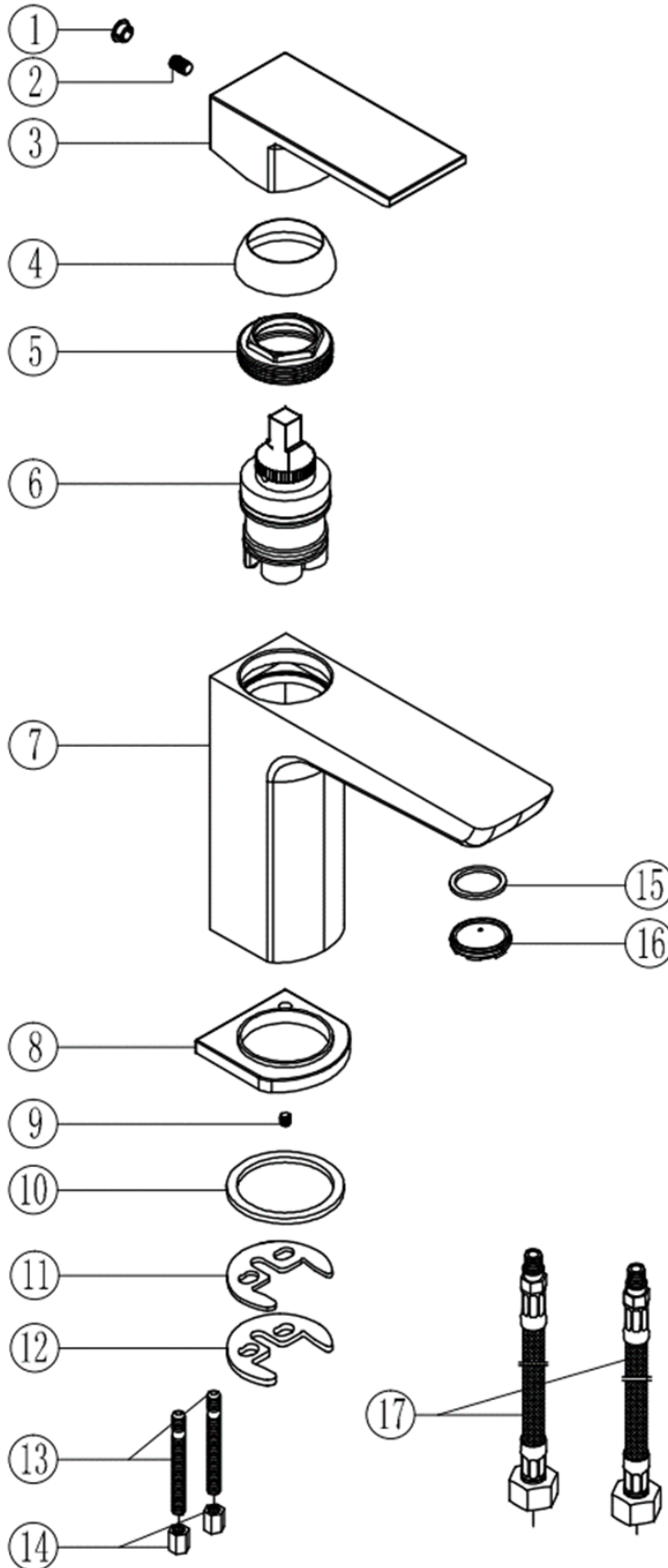
FOR FURTHER ADVICE PLEASE CONTACT :-

SAGITTARIUS LTD UNIT 1 LOWER VICTORIA STREET—CHADDERTON—OLDHAM—OL9 9TU TEL:0616 6202029

EMAIL:TECHNICAL@SAGITTARIUSTAPS.CO.UK

Flow Rates (Litres per minute)

System Pressure	0.1 Bar	0.2 Bar	0.3 Bar	0.5 Bar	1.0 Bar	1.5 Bar	2.0 Bar	3.0 Bar	4.0 Bar	5.0 Bar
	4.3	5.7	-	9.0	12.5	15.1	17.5	21.2	-	-



No.	DESCRIPTION	QTY
1	Dia. 6.8 COVER CAP	1
2	M5*6 GRUB SCREW	1
3	HANDLE	1
4	HANDLE COLLAR	1
5	CARTRIDGE LOCK NUT	1
6	35mm CARTRIDGE	1
7	TAP BODY	1
8	BASE PLATE	1
9	M4*8 GRUB SCREW	1
10	46x38x2.5 WASHER	1
11	HORSE-SHOE WASHER	1
12	HORSE-SHOE FIXING PLATE	1
13	M6*70 FIXING ROD	1
14	BRASS FIXING NUT	1
15	AERATOR WASHER	2
16	M24*1 AERATOR	1
17	FLEXITAILS	2
18	WASTE	1

FOR FURTHER ADVICE PLEASE CONTACT :-

SAGITTARIUS LTD UNIT 1 LOWER VICTORIA STREET—CHADDERTON—OLDHAM—OL9 9TU TEL:0616 6202029

EMAIL:TECHNICAL@SAGITTARIUSTAPS.CO.UK