

SAGITTARIUS

TAPS & SHOWERING

Finishes	Matt Black
Product Type	Contemporary
Water Pressure Tested Between	Min. 0.2 bar, Max. 6.0 bar
Certification	Manufactured to comply with WRAS standards
Cartridge	1/4 Turn 3/4" Ceramic disc valves
Fitting	Brass G $\frac{3}{4}$ " BSP tails
Aerator	Neoperl spout aerator
Guarantee	5 years against manufacturing faults (excluding serviceable parts)
Operating Water Pressure	



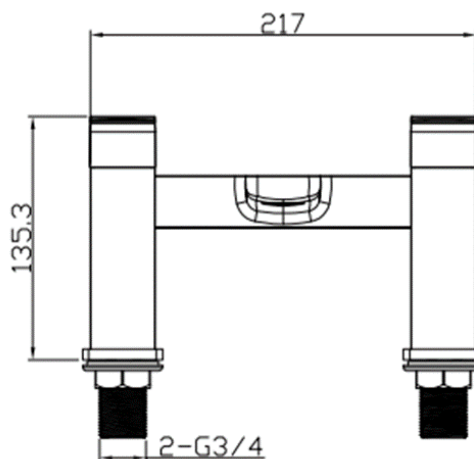
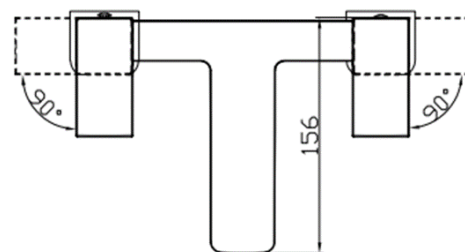
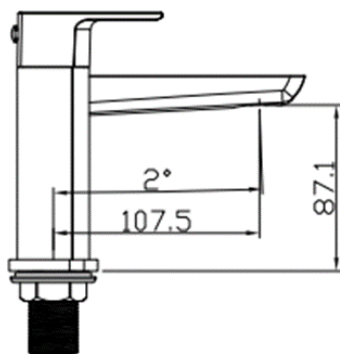
LOW PRESSURE
0.2-0.5 bar



COMBI BOILER



HIGH PRESSURE
1.2-1.5+ bar



The information contained on this page was correct at the date of issue. Fitting dimensions are provided as a guide only. Some variation may occur due to manufacturing tolerances. We pursue a policy of continuing improvement in design and performance of our products and so reserve the right to change specifications without prior notice

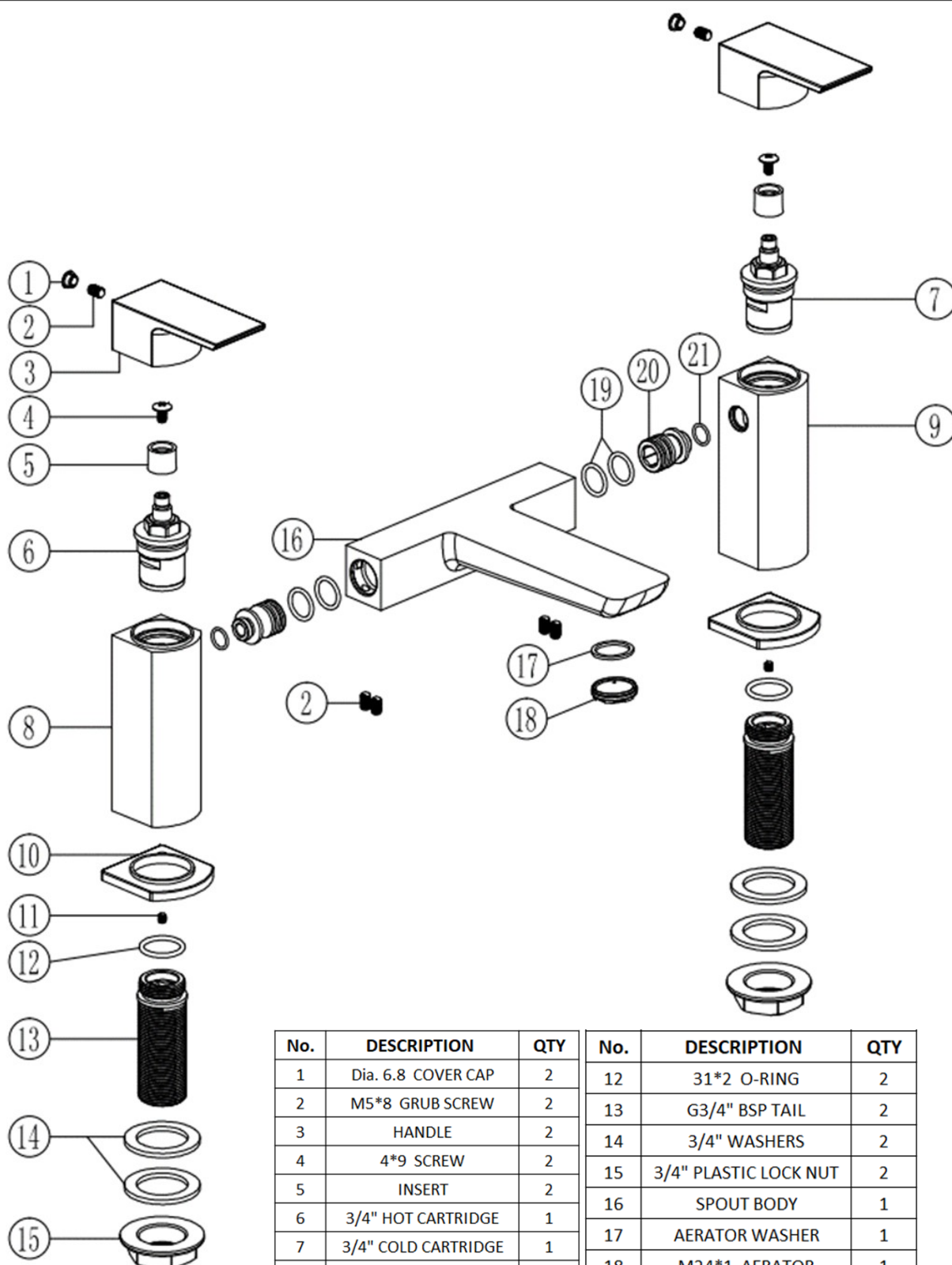
FOR FURTHER ADVICE PLEASE CONTACT :-

SAGITTARIUS LTD UNIT 1 LOWER VICTORIA STREET—CHADDERTON—OLDHAM—OL9 9TU TEL:0616 6202029

EMAIL:TECHNICAL@SAGITTARIUSTAPS.CO.UK

Flow Rates (Litres per minute)

System Pressure	0.1 Bar	0.2 Bar	0.3 Bar	0.5 Bar	1.0 Bar	1.5 Bar	2.0 Bar	3.0 Bar	4.0 Bar	5.0 Bar
	-	8.6	-	13.8	18.3	21.7	24.7	27	-	-



No.	DESCRIPTION	QTY	No.	DESCRIPTION	QTY
1	Dia. 6.8 COVER CAP	2	12	31*2 O-RING	2
2	M5*8 GRUB SCREW	2	13	G3/4" BSP TAIL	2
3	HANDLE	2	14	3/4" WASHERS	2
4	4*9 SCREW	2	15	3/4" PLASTIC LOCK NUT	2
5	INSERT	2	16	SPOUT BODY	1
6	3/4" HOT CARTRIDGE	1	17	AERATOR WASHER	1
7	3/4" COLD CARTRIDGE	1	18	M24*1 AERATOR	1
8	HOT PILLAR	1	19	18*2 O-RING	4
9	COLD PILLAR	1	20	CONNECTOR	2
10	BASE PLATE	2	21	12*2 O-RING	2
11	M4*8 GRUB SCREW	2			

FOR FURTHER ADVICE PLEASE CONTACT :-

SAGITTARIUS LTD UNIT 1 LOWER VICTORIA STREET—CHADDERTON—OLDHAM—OL9 9TU TEL:0616 6202029

EMAIL:TECHNICAL@SAGITTARIUSTAPS.CO.UK