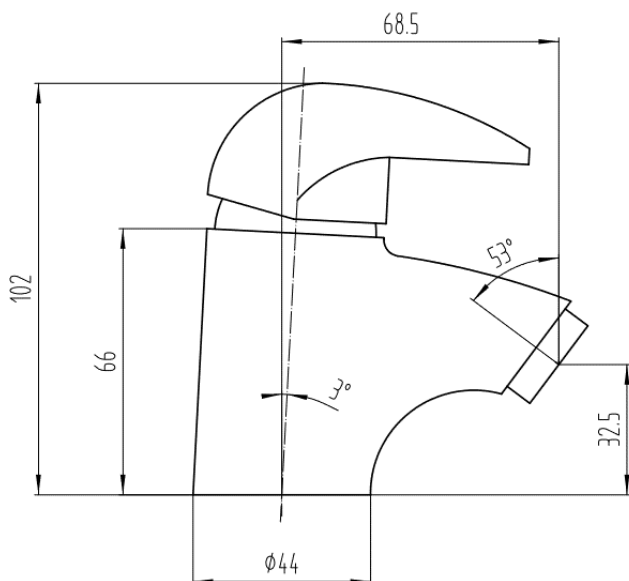


SAGITTARIUS

TAPS & SHOWERING

Construction	Brass Body (CuZn40Pb2), EN CW617N Zinc-alloy Handle
Finishes	Chrome plated to BS EN 248
Water Pressure Tested	Min. 0.5 bar, Max. 6.0 bar
Standards	Complies with BS6920, BS EN200
Cartridge	35mm Ceramic disc cartridge
Fitting	UK: M10 x 350mm G1/2" BSP Female Flexi Tails EU: M10 x 350mm G3/8" BSP Female Flexi
Aerator	Spout aerator
Guarantee	10 years against manufacturing faults
Additional In-	Supplied with G1¼" sprung waste (UK only)

PRESTIGE CONTRACT BASIN MIXER CHROME PR/186/C

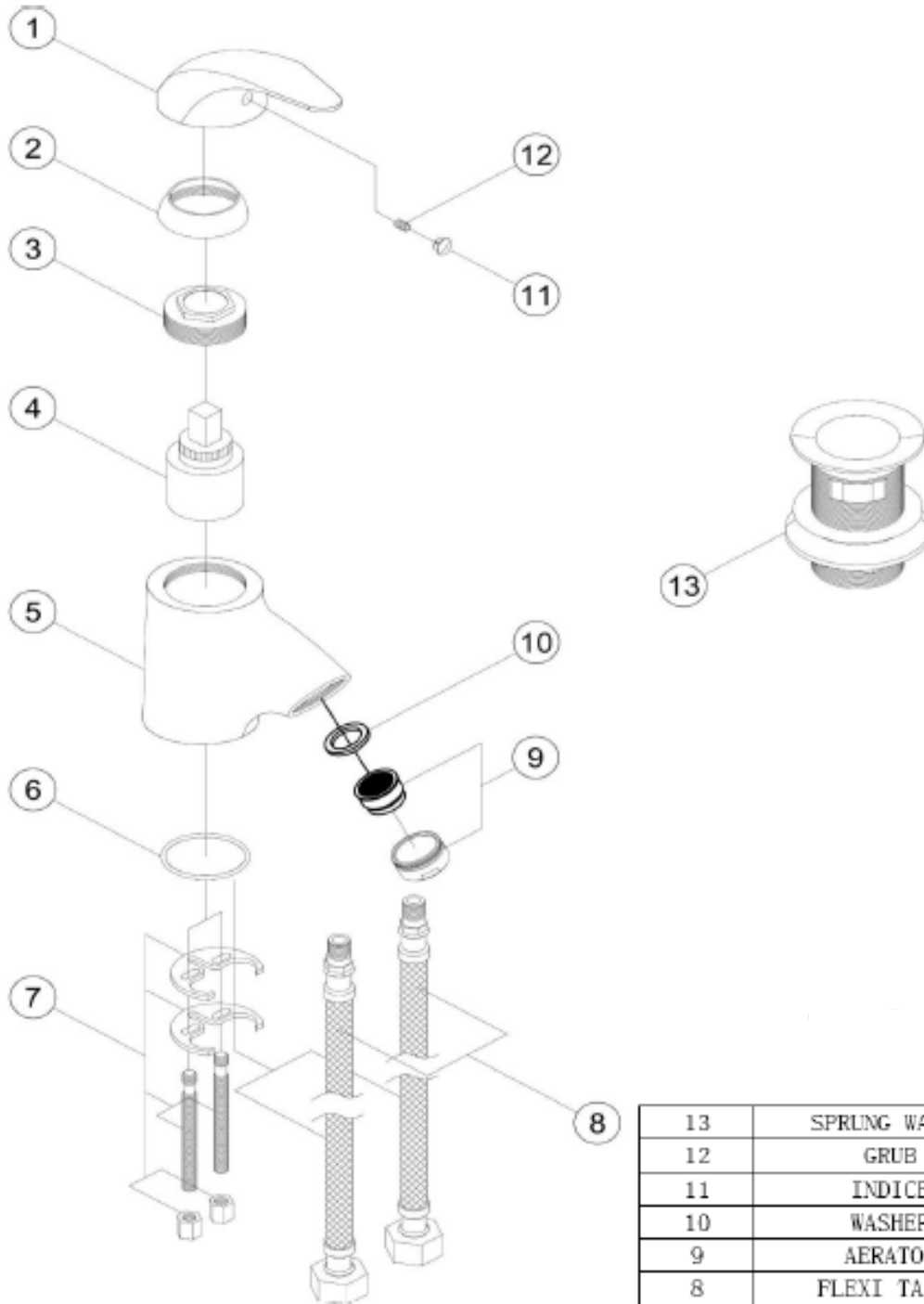


The information contained on this page was correct at the date of issue. Fitting dimensions are provided as a guide only. Some variation may occur due to manufacturing tolerances. We pursue a policy of continuing improvement in design and performance of our products and so reserve the right to change specifications without prior notice

FOR FURTHER ADVICE PLEASE CONTACT :-
SAGITTARIUS LTD UNIT 1 LOWER VICTORIA STREET—CHADDERTON—OLDHAM—OL9 9TU TEL:0616 6202029
EMAIL:TECHNICAL@SAGITTARIUSTAPS.CO.UK

Flow Rates (Litres per minute)

System Pressure	0.1 Bar	0.2 Bar	0.3 Bar	0.5 Bar	1.0 Bar	1.5 Bar	2.0 Bar	3.0 Bar	4.0 Bar	5.0 Bar
	1.2	3.8	-	7.1	10.4	13.0	16.8	18.1	-	-



13	SPRUNG WASTE	1
12	GRUB	1
11	INDICE	1
10	WASHER	1
9	AERATOR	1
8	FLEXI TAILS	1
7	FITTING KITS	1
6	O-RING	1
5	BODY	1
4	CARTRIDGE	1
3	CARTRIDGE NUT	1
2	CARTRIDGE COVER	1
1	HANDLE	1
No.	DESCRIPTION	QTY