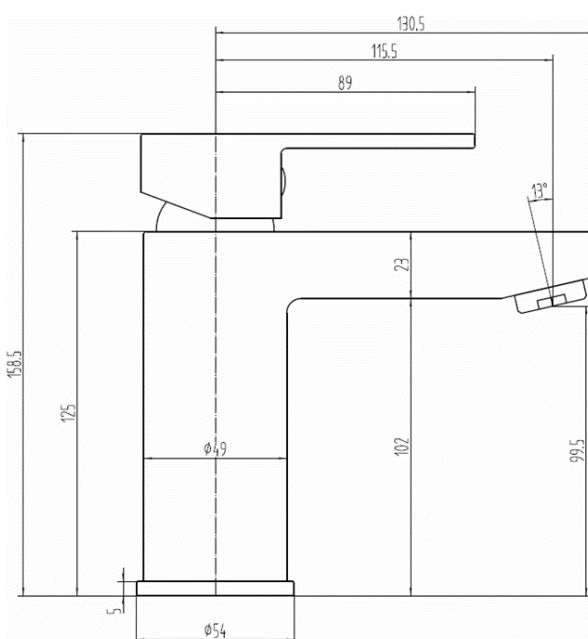
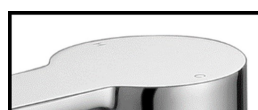


SAGITTARIUS

TAPS & SHOWERING

PLAZA MONO BLOC BASIN MIXER PL/106

Construction	Brass Body, Zinc-alloy Handle
Finishes	Chrome plated to BS EN 248
Product Type	Contemporary
Water Pressure Tested Between Standards	Min. 0.2 bar, Max. 6.0 bar Complies with BS6920, BS EN200
Certification	Manufactured to comply with WRAS
Cartridge	40mm Ceramic disc cartridge
Aerator	M24*1 Spout aerator
Fitting	UK: M10 x 400mm G½" BSP Female Flexi Tails EU: M10 x 400mm G3/8" BSP Female
Guarantee	10 years against manufacturing faults (excluding serviceable parts)
Additional Information	Supplied with G1¼" sprung waste (UK only)
Operating Water Pressure	



LOW PRESSURE

0.2-0.5 bar



COMBI BOILER



HIGH PRESSURE

1.2-1.5+ bar

The information contained on this page was correct at the date of issue. Fitting dimensions are provided as a guide only. Some variation may occur due to manufacturing tolerances. We pursue a policy of continuing improvement in design and performance of our products and so reserve the right to change specifications without prior notice

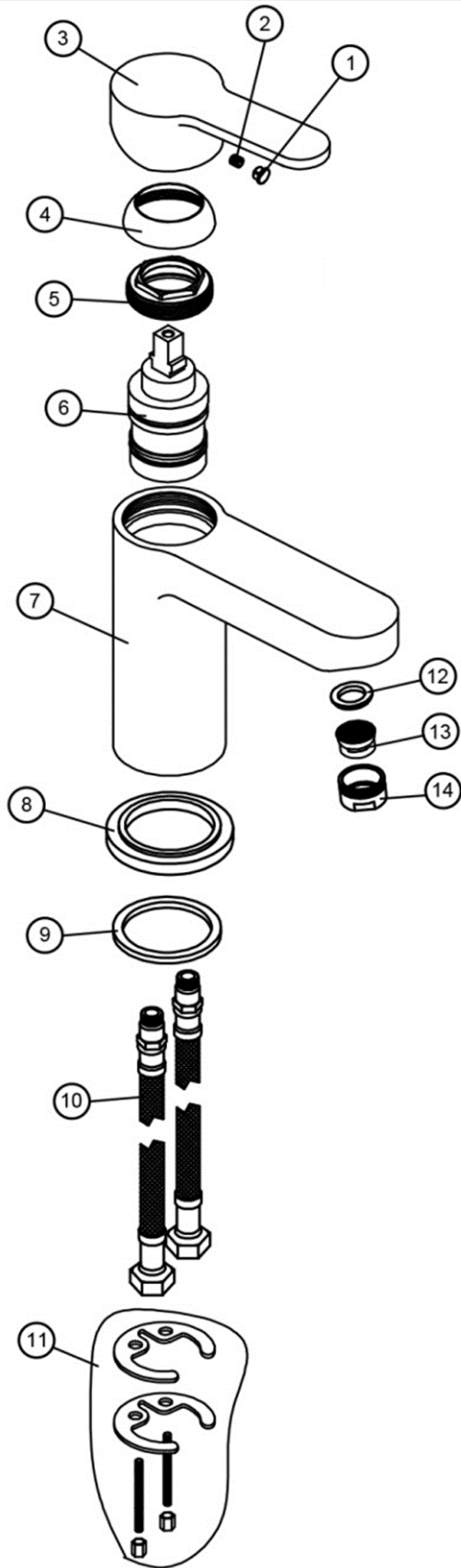
FOR FURTHER ADVICE PLEASE CONTACT :-

SAGITTARIUS LTD UNIT 1 LOWER VICTORIA STREET—CHADDERTON—OLDHAM—OL9 9TU TEL:0616 6202029

EMAIL:TECHNICAL@SAGITTARIUSTAPS.CO.UK

Flow Rates (Litres per minute)

System Pressure	0.1 Bar	0.2 Bar	0.3 Bar	0.5 Bar	1.0 Bar	1.5 Bar	2.0 Bar	3.0 Bar	4.0 Bar	5.0 Bar
	3.2	3.8	-	5.3	6.8	8.2	9.5	11.3	-	-



NO.	DESCRIPTION	QTY
1	INDICE	1
2	SCREW	1
3	HANDLE	1
4	PLASTIC COVER	1
5	CARTRIDGE NUT	1
6	40 CARTRIDGE	1
7	BODY	1
8	BASE PLATE	1
9	WASHER	1
10	110*1*400 FLEXI TAILS	2
11	M6 FIXING KIT	1
12	WASHER	1
13	NEOPERL AERATOR	1
14	M24*1 NOZZLE	1