

# SAGITTARIUS

## TAPS & SHOWERING

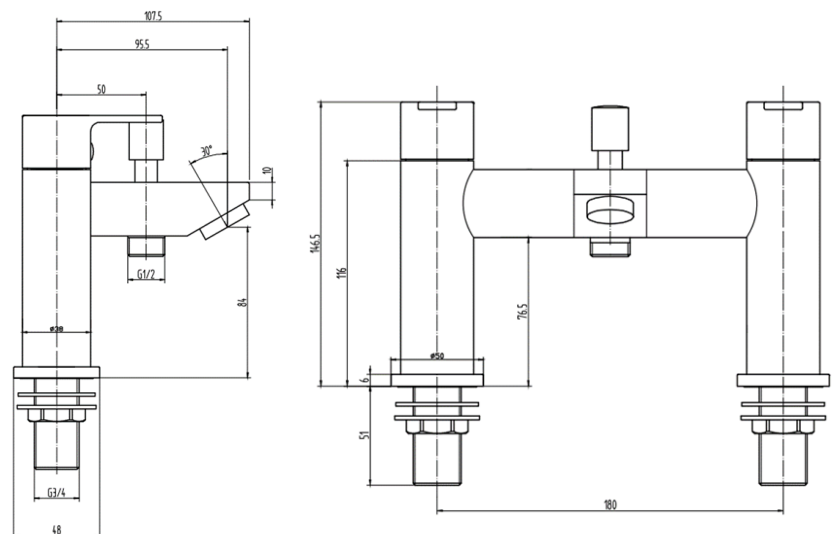
<b>Construction</b>	Brass Body, Zinc-alloy Handles
<b>Finishes</b>	Chrome plated to BS EN 248
<b>Product Type</b>	Contemporary
<b>Water Pressure Tested Between</b>	Min. 0.2 bar (handset) 1.0 bar (spout), Max. 6.0 bar
<b>Standards</b>	Complies with BS5412, BS EN200
<b>Certification</b>	Manufactured to comply with WRAS (WRAS version available for pre order)

### PLAZA BATH SHOWER MIXER PL/105

<b>Cartridge</b>	1/4 Turn 3/4" Ceramic disc valves
<b>Aerator</b>	Spout aerator
<b>Fitting</b>	Brass G3/4" BSP tails
<b>Guarantee</b>	10 years against manufacturing faults (excluding serviceable parts)
<b>Additional Information</b>	1. Shower handset : Chrome , ABS , single mode 2. Handset holder : Chrome , ABS , wall mounted 3. Shower hose : Stainless steel , double interlock 1.5m , G1/2" BSP connections



### Operating Water Pressure



The information contained on this page was correct at the date of issue. Fitting dimensions are provided as a guide only. Some variation may occur due to manufacturing tolerances. We pursue a policy of continuing improvement in design and performance of our products and so reserve the right to change specifications without prior notice

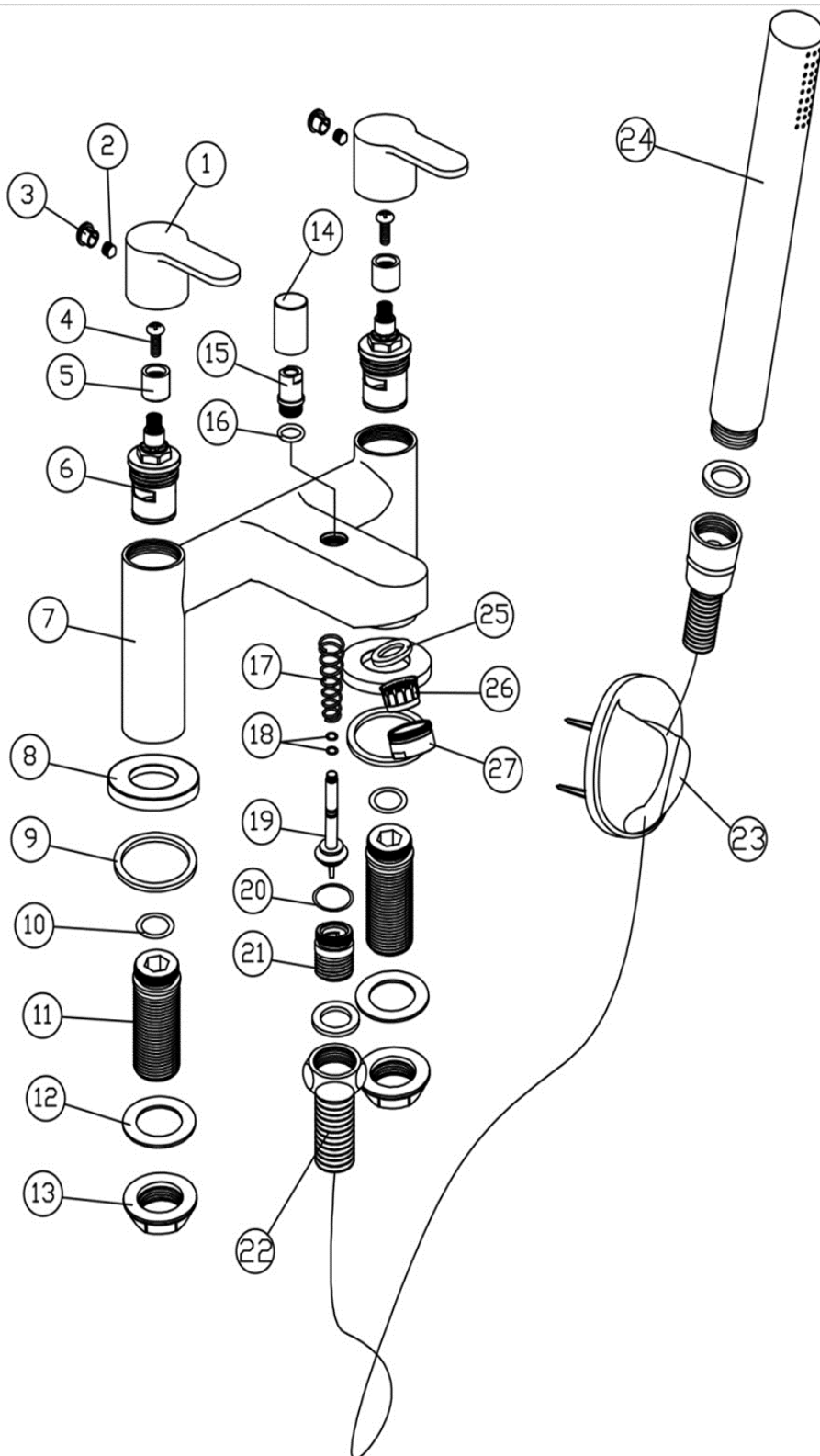
FOR FURTHER ADVICE PLEASE CONTACT :-

SAGITTARIUS LTD UNIT 1 LOWER VICTORIA STREET—CHADDERTON—OLDHAM—OL9 9TU TEL:0616 6202029

EMAIL:TECHNICAL@SAGITTARIUSTAPS.CO.UK

**Flow Rates** (Litres per minute)

System Pressure	0.1 Bar	0.2 Bar	0.3 Bar	0.5 Bar	1.0 Bar	1.5 Bar	2.0 Bar	3.0 Bar	4.0 Bar	5.0 Bar
	4.0	7.1	-	11.2	17.2	22.0	26.3	34.0	-	-



No.	Description	Qty
1	Handle	2
2	M5*6 Screw	2
3	Plastic Badge	2
4	M4*9 Screw	2
5	PVC Core	2
6	3/4" Cartridge	2
7	Body	1
8	Base Plate	2
9	46*38*25 Rubber Washer	2
10	24*2.4 O-Ring	2
11	3/4" BSP Tails	2
12	3/4" Rubber Washer	2
13	Plastic Back Nut	2
14	Diverter Cap	1
15	Connector	1
16	12*2 O-Ring	1
17	Spring	1
18	7*1.6 O-Ring	2
19	Diverter Core	1
20	20*2 O-Ring	1
21	Hose Connector	1
22	150CM Flexible Hose	1
23	Bracket	1
24	Handhold Shower	1
25	23*15*3 Rubber Washer	1
26	Neoperl Aerator	1
27	Nozzle	1

FOR FURTHER ADVICE PLEASE CONTACT :-  
 SAGITTARIUS LTD UNIT 1 LOWER VICTORIA STREET—CHADDERTON—OLDHAM—OL9 9TU TEL:0616 6202029  
 EMAIL:TECHNICAL@SAGITTARIUSTAPS.CO.UK