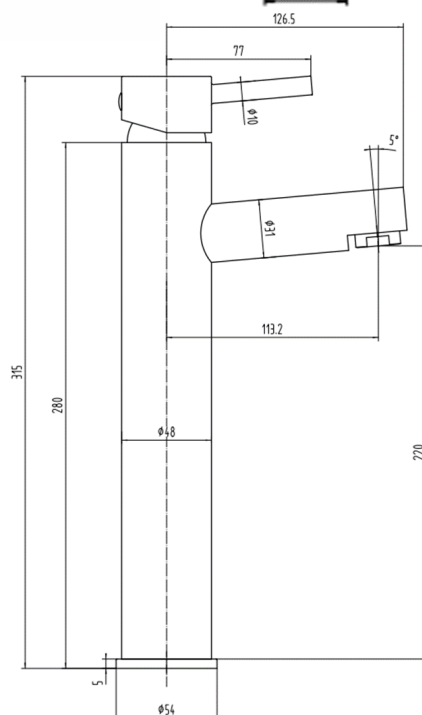
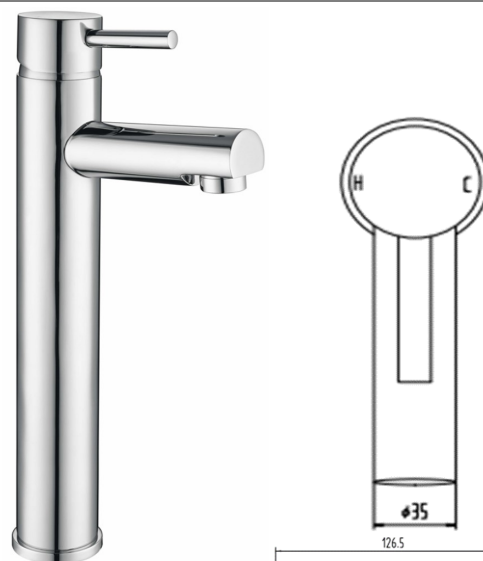


SAGITTARIUS

TAPS & SHOWERING

PIAZA TALL BASIN MIXER PI/109

Construction	Brass Body, Zinc-alloy Handle
Finishes	Chrome plated to BS EN 248
Product Type	Contemporary
Water Pressure Tested Between	Min. 0.2 bar, Max. 6.0 bar
Standards	Complies with BS6920, BS EN200
Certification	Manufactured to comply with WRAS
Cartridge	40mm Ceramic disc cartridge
Fitting	UK: M10 x 350mm G½" BSP Female Flexi Tails EU: M10 x 350mm G3/8" BSP Female Flexi Tails
Guarantee	10 years against manufacturing faults (excluding serviceable parts)

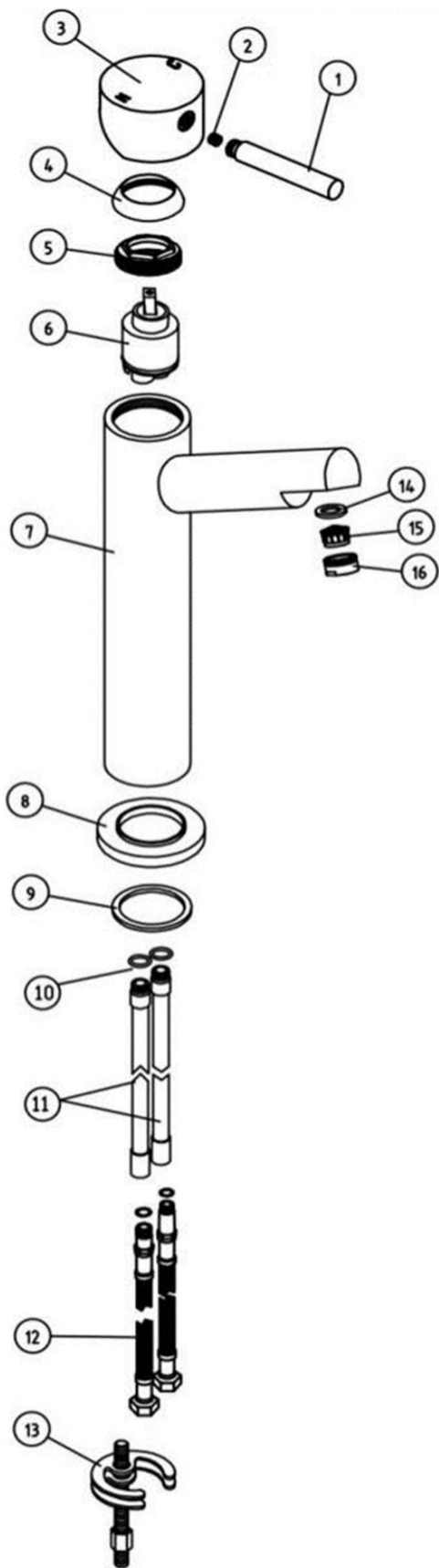


The information contained on this page was correct at the date of issue. Fitting dimensions are provided as a guide only. Some variation may occur due to manufacturing tolerances. We pursue a policy of continuing improvement in design and performance of our products and so reserve the right to change specifications without prior notice

FOR FURTHER ADVICE PLEASE CONTACT :-
SAGITTARIUS LTD UNIT 1 LOWER VICTORIA STREET—CHADDERTON—OLDHAM—OL9 9TU TEL:0616 6202029
EMAIL:TECHNICAL@SAGITTARIUSTAPS.CO.UK

Flow Rates (Litres per minute)

System Pressure	0.1 Bar	0.2 Bar	0.3 Bar	0.5 Bar	1.0 Bar	1.5 Bar	2.0 Bar	3.0 Bar	4.0 Bar	5.0 Bar
	2.8	3.3	-	5.3	8.1	10.7	11.7	14.3	-	-



NO	NAME	QTY
1	HANDLE LEVER	1
2	GRUB SCREW	1
3	HANDLE	1
4	SHROUD	1
5	CARTRIDGE NUT	1
6	φ40 CARTRIDGE	1
7	TAP BODY	1
8	BASE PLATE	1
9	O-RING	1
10	"ORING	2
11	CONNECTORS	2
12	HOSES	2
13	M8 FIXING KIT	1
14	O-RING	1
15	AERATOR	1
16	M24 NOZZEL	1

FOR FURTHER ADVICE PLEASE CONTACT :-

SAGITTARIUS LTD UNIT 1 LOWER VICTORIA STREET—CHADDERTON—OLDHAM—OL9 9TU TEL:0616 6202029

EMAIL:TECHNICAL@SAGITTARIUSTAPS.CO.UK