

SAGITTARIUS

TAPS & SHOWERING

Construction	Brass Body, Zinc-alloy Handle
Finishes	Chrome plated to BS EN 248
Product Type	Contemporary
Water Pressure Tested Between Standards	Min. 0.2 bar, Max. 6.0 bar
Certification	WRAS (1710044) approved and certified
Net Weight (Tap only)	980g
Cartridge	40mm Ceramic disc cartridge
Aerator	Spout aerator
Fitting	M12 x 400mm G½" BSP Female Flexi Tails (UK)
Guarantee	10 years against manufacturing faults (excluding serviceable parts)
Additional Information	Supplied with G1¼" sprung waste (UK)

PIAZZA MONO BASIN MIXER PI/106



Operating Water Pressure



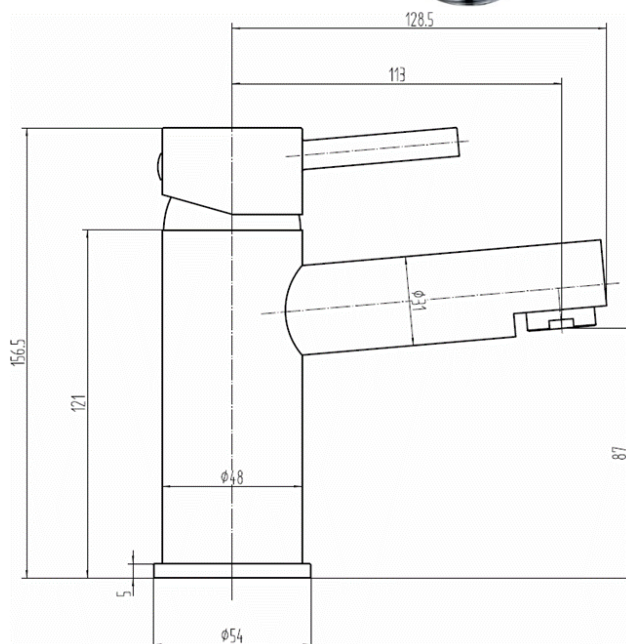
LOW PRESSURE
0.2 - 0.5 bar



COMBI BOILER



HIGH PRESSURE
1.2 - 1.5+ bar



The information contained on this page was correct at the date of issue. Fitting dimensions are provided as a guide only. Some variation may occur due to manufacturing tolerances. We pursue a policy of continuing improvement in design and performance of our products and so reserve the right to change specifications without prior notice

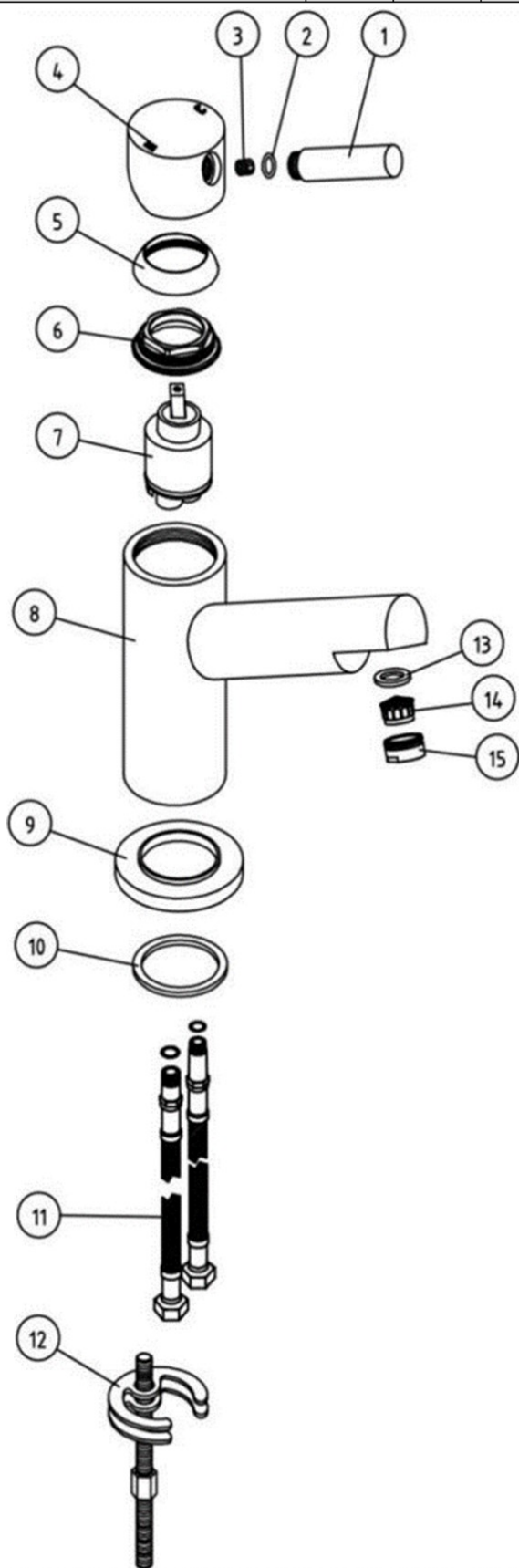
FOR FURTHER ADVICE PLEASE CONTACT :-

SAGITTARIUS LTD UNIT 1 LOWER VICTORIA STREET—CHADDERTON—OLDHAM—OL9 9TU TEL:0616 6202029

EMAIL:TECHNICAL@SAGITTARIUSTAPS.CO.UK

Flow Rates (Litres per minute)

System Pressure	0.1 Bar	0.2 Bar	0.3 Bar	0.5 Bar	1.0 Bar	1.5 Bar	2.0 Bar	3.0 Bar	4.0 Bar	5.0 Bar
	3.2	3.7	-	5.8	8.0	9.0	11.8	14.5	-	-



NO	NAME	QTY
1	HANDLE LEVER	1
2	O-RING	1
3	GRUB SCREW	1
4	HANDLE	1
5	SHROUD	1
6	CARTRIDGE NUT	1
7	φ40 CARTRIDGE	1
8	TAP BODY	1
9	φ54 BASE PLATE	1
10	O-RING	1
11	M12 HOSES	2
12	M8 FIXING KIT	1
13	O-RING	1
14	AERATOR	1
15	M24*1 NOZZEL	1

FOR FURTHER ADVICE PLEASE CONTACT :-

SAGITTARIUS LTD UNIT 1 LOWER VICTORIA STREET—CHADDERTON—OLDHAM—OL9 9TU TEL:0616 6202029

EMAIL:TECHNICAL@SAGITTARIUSTAPS.CO.UK