

# SAGITTARIUS

## TAPS & SHOWERING

### PIAZZA BATH TAPS

PI/102/C

<b>Construction</b>	Brass Body, Zinc-alloy Handles
<b>Finishes</b>	Chrome plated to BS EN 248
<b>Product Type</b>	Contemporary
<b>Water Pressure Tested Between</b>	Min. 0.2 bar, Max. 6.0 bar
<b>Standards</b>	Complies with BS5412, BS EN200
<b>Cartridge</b>	1/4 Turn 3/4" Ceramic disc valves
<b>Aerator</b>	Laminar stream straightener
<b>Fitting</b>	Brass G3/4" BSP tails
<b>Guarantee</b>	10 years against manufacturing faults (excluding serviceable parts)
<b>Operating Water Pressure</b>	



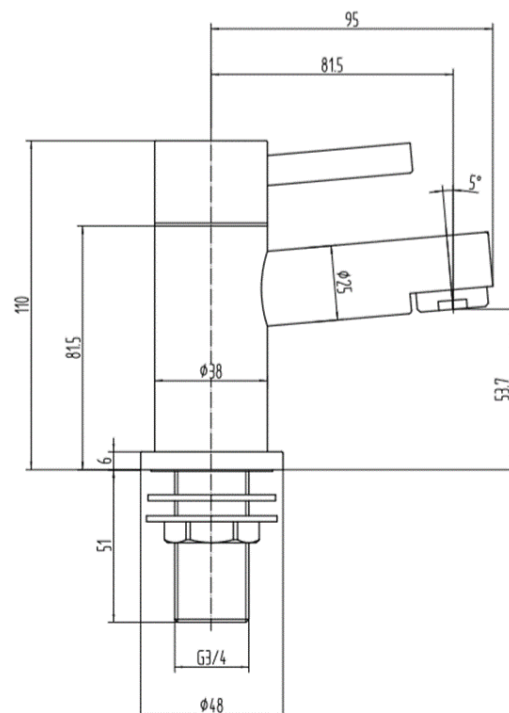
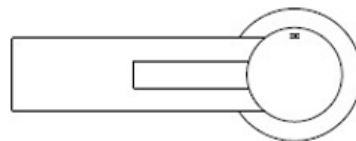
**LOW PRESSURE**  
0.2-0.5 bar



**COMBI BOILER**



**HIGH PRESSURE**  
1.2-1.5+ bar



The information contained on this page was correct at the date of issue. Fitting dimensions are provided as a guide only. Some variation may occur due to manufacturing tolerances. We pursue a policy of continuing improvement in design and performance of our products and so reserve

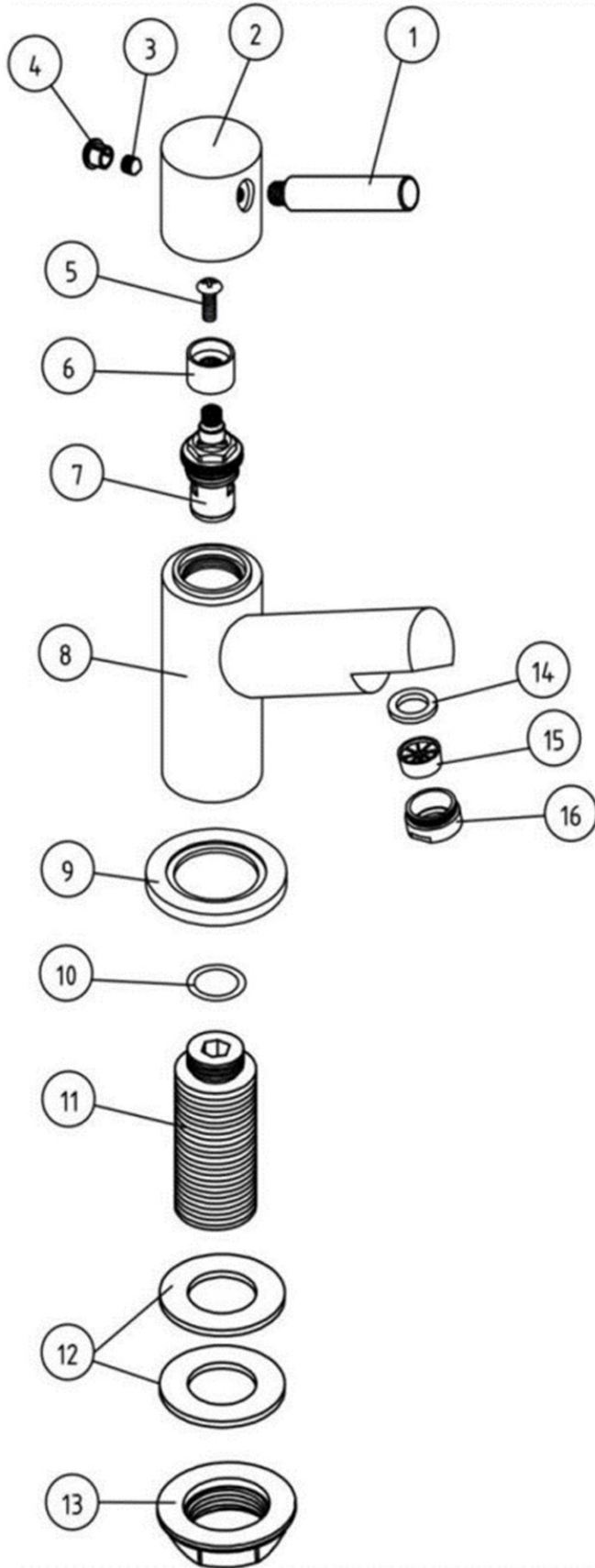
FOR FURTHER ADVICE PLEASE CONTACT :-

SAGITTARIUS LTD UNIT 1 LOWER VICTORIA STREET—CHADDERTON—OLDHAM—OL9 9TU TEL:0616 6202029

EMAIL:TECHNICAL@SAGITTARIUSTAPS.CO.UK

**Flow Rates** (Litres per minute)

System Pressure	0.1 Bar	0.2 Bar	0.3 Bar	0.5 Bar	1.0 Bar	1.5 Bar	2.0 Bar	3.0 Bar	4.0 Bar	5.0 Bar
	7.8	9.3	-	12.4	18.4	21.9	25.2	31.5	-	-



NO	NAME	QTY
1	HANDLE LEVER	2
2	HANDLE	2
3	GRUB SCREW	2
4	CAP	2
5	SCREW	2
6	PVC CORE	2
7	1/2" CARTRIDGE	1 PAIRS
8	TAP BODY	2
9	BASE-PLATE	2
10	"O"-RING	2
11	3/4" GSP TAIL	2
12	O-RING	4
13	BACKNUT	2
14	O-RING	2
15	AERATOR	2
16	NOZZEL	2

FOR FURTHER ADVICE PLEASE CONTACT :-

SAGITTARIUS LTD UNIT 1 LOWER VICTORIA STREET—CHADDERTON—OLDHAM—OL9 9TU TEL:0616 6202029

EMAIL:TECHNICAL@SAGITTARIUSTAPS.CO.UK