

SAGITTARIUS

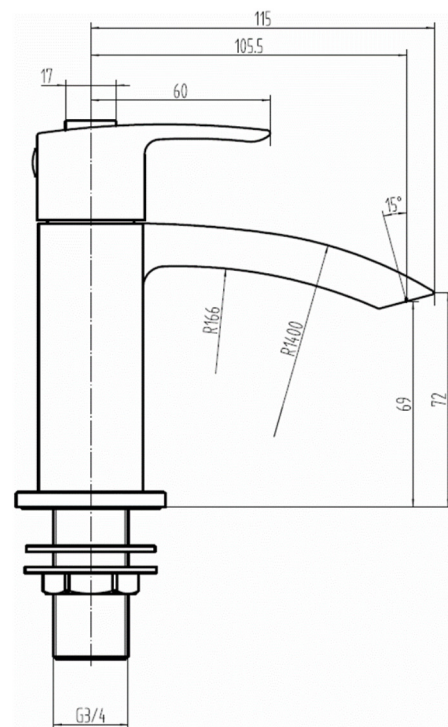
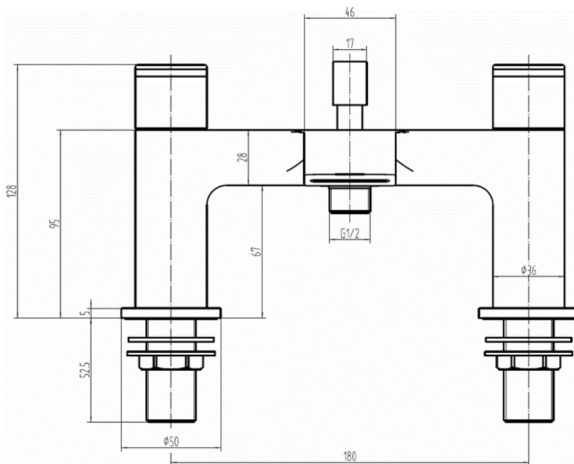
TAPS & SHOWERING

Construction	Brass Body
Finishes	Chrome
Product Type	Contemporary
Water Pressure	Min. 0.2 bar, Max. 6.0 bar
Plumbing Systems	Suitable for all plumbing systems
Standards	Complies with BS5412, BS EN200
Certification	Manufactured to comply with WRAS
Cartridge	1/4 Turn 3/4" Ceramic Disc Valves
Fitting	3/4" BSP
Packaging	49.5 x 42 x 33cm / carton (8 boxes / carton)
Guarantee	10 years against manufacturing faults (excluding serviceable parts).
Additional Information	Supplied with 1.5m hose, wall bracket and single mode ABS handset

NAPLES BATH SHOWER

MIXER CHROME

NA/105/C



Flow Rates (Litres per minute)

System Pressure	0.1 Bar	0.2 Bar	0.3 Bar	0.5 Bar	1.0 Bar	1.5 Bar	2.0 Bar	3.0 Bar	4.0 Bar	5.0 Bar
NA105	9.5	11.2		16.1	21.9	26.3	30.2	36	-	-

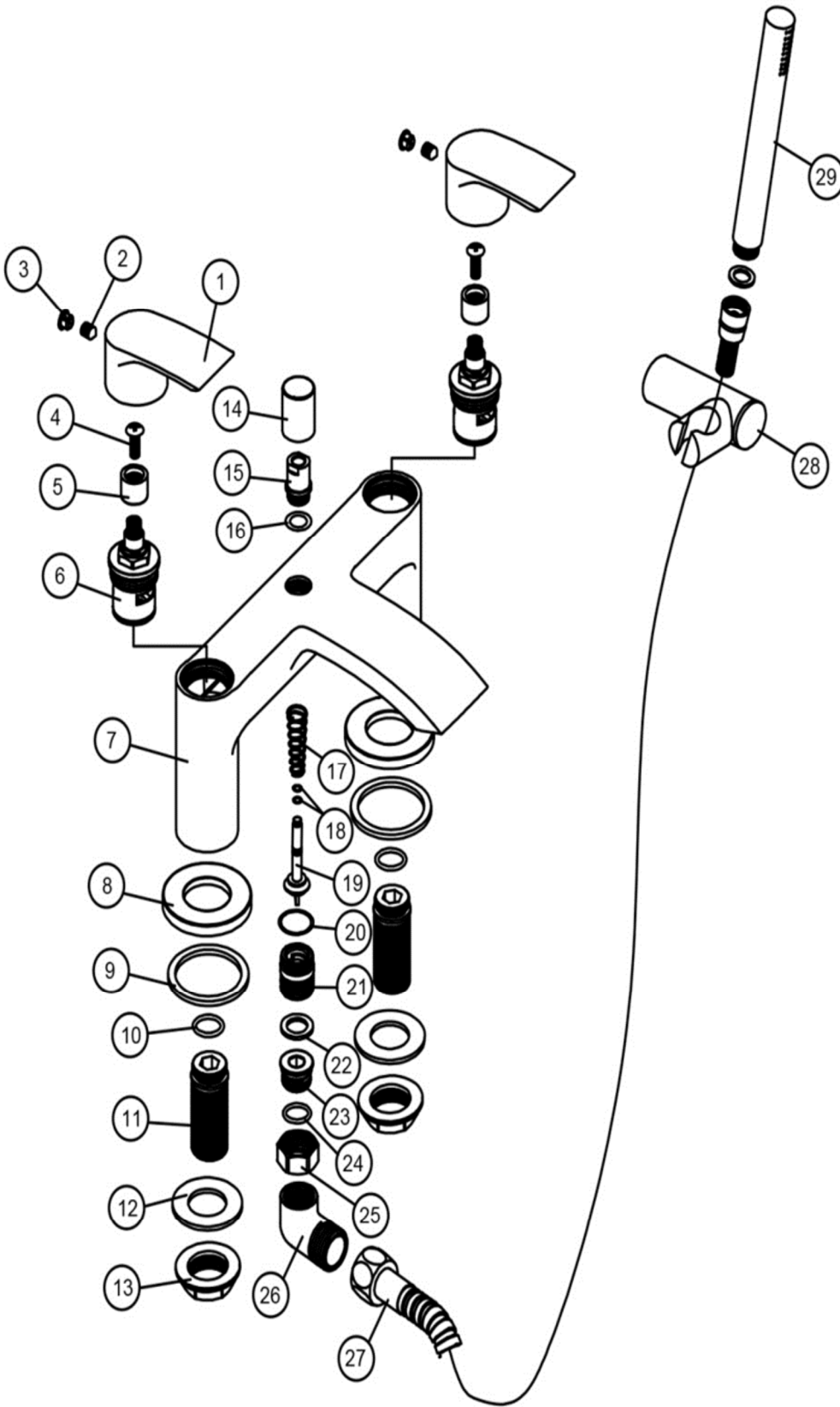
The information contained on this page was correct at the date of issue. Fitting dimensions are provided as a guide only. Some variation may occur due to manufacturing tolerances. We pursue a policy of continuing improvement in design and performance of our products and so reserve the right to change specifications without prior notice

FOR FURTHER ADVICE PLEASE CONTACT :-

SAGITTARIUS LTD UNIT 1 LOWER VICTORIA STREET—CHADDERTON—OLDHAM—OL9 9TU TEL:0616 6202029

EMAIL:TECHNICAL@SAGITTARIUSTAPS.CO.UK

Bath Shower Mixer



NO.	DESCRIPTION	QTY
1	HANDLE	2
2	M5*6 SCREW	2
3	INDICE	2
4	M4*9 SCREW	2
5	PVC CORE	2
6	3/4" QUARTER-TURN CARTRIDGE	2
7	TAP BODY	1
8	50 BASE PLATE	2
9	46*38*2.5 WASHER	2
10	24*2.4 "O" RING	2
11	3/4" BSP TAILS	2
12	3/4" WASHER	2
13	BACK NUT	2
14	DIVERTOR	1
15	DIVERTOR CONNECTOR	1
16	12*2 "O" RING	1
17	SPRING	1
18	7*1.6 "O" RING	2
19	Diverter STEM	1
20	20*2 "O" RING	1
21	CONNECTOR	1
22	18*12*2 WASHER	1
23	FIXING NUT	1
24	16*2 "O" RING	1
25	FIXING CONNECTOR	1
26	HOSE CONNECTOR	1
27	1.5M SHOWER HOSE	1
28	SHOWER HOLDER	1
29	HAND SHOWER	1