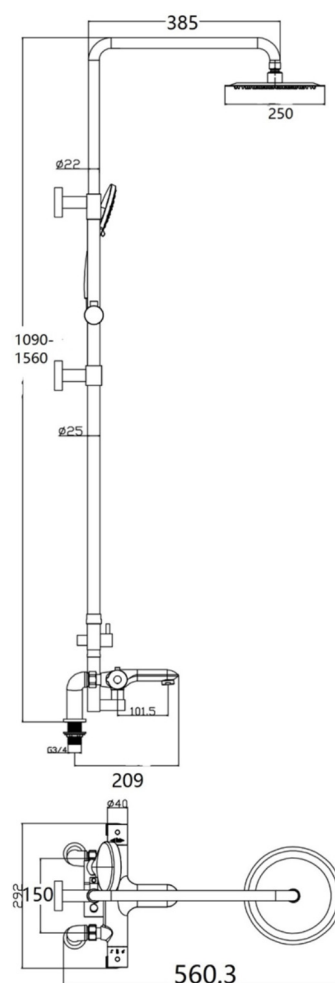


# SAGITTARIUS

## TAPS & SHOWERING

### LOGIK DECK MOUNTES BSM & RIGID RISER KIT CHROME LO/298/C

<b>Construction</b>	Brass Body CuZn40Pb2, EN CW617N (equivalent to BS CZ122)
<b>Finishes</b>	ABS Handle
<b>Product Type</b>	Chrome : Ni : 8-12um, Cr : 0.25-0.3um
<b>Water Pressure</b>	Contemporary
<b>Plumbing Systems</b>	Min. 0.5 bar, Max. 6.0 bar
	Suitable for all plumbing systems, preferably balanced. Min. supply pressure differential requirement is 5:1
<b>Standards</b>	Complies with BS EN 1111
<b>Certification</b>	Manufactured to comply with WRAS, TMV2
<b>Cartridge</b>	Thermostatic
<b>Valve Type</b>	Ceramic Disc Cartridge
<b>Check</b>	Neoperl
<b>Aerator</b>	Adjustable Slim Air
<b>Fitting</b>	¾" BSP deck mounted pillars
<b>Packaging</b>	120 x 45.5 x 53cm / carton (4 boxes / carton)
<b>Guarantee</b>	10 years against manufacturing faults (excluding serviceable parts).
<b>Additional Information</b>	1. Temperature : Pre-set 38°C, with push button override to 48°C. 2. Automatic shut off in the event of hot or cold water supply failure. 3. Shower head : 250mm, SS304, Ultra Slim & Air Induction 4. Shower handset : Chrome , ABS , 3-mode 5. Shower hose : PVC , 1.5m 6. Stainless steel adjustable riser rail



### Flow Rates (Litres per minute)

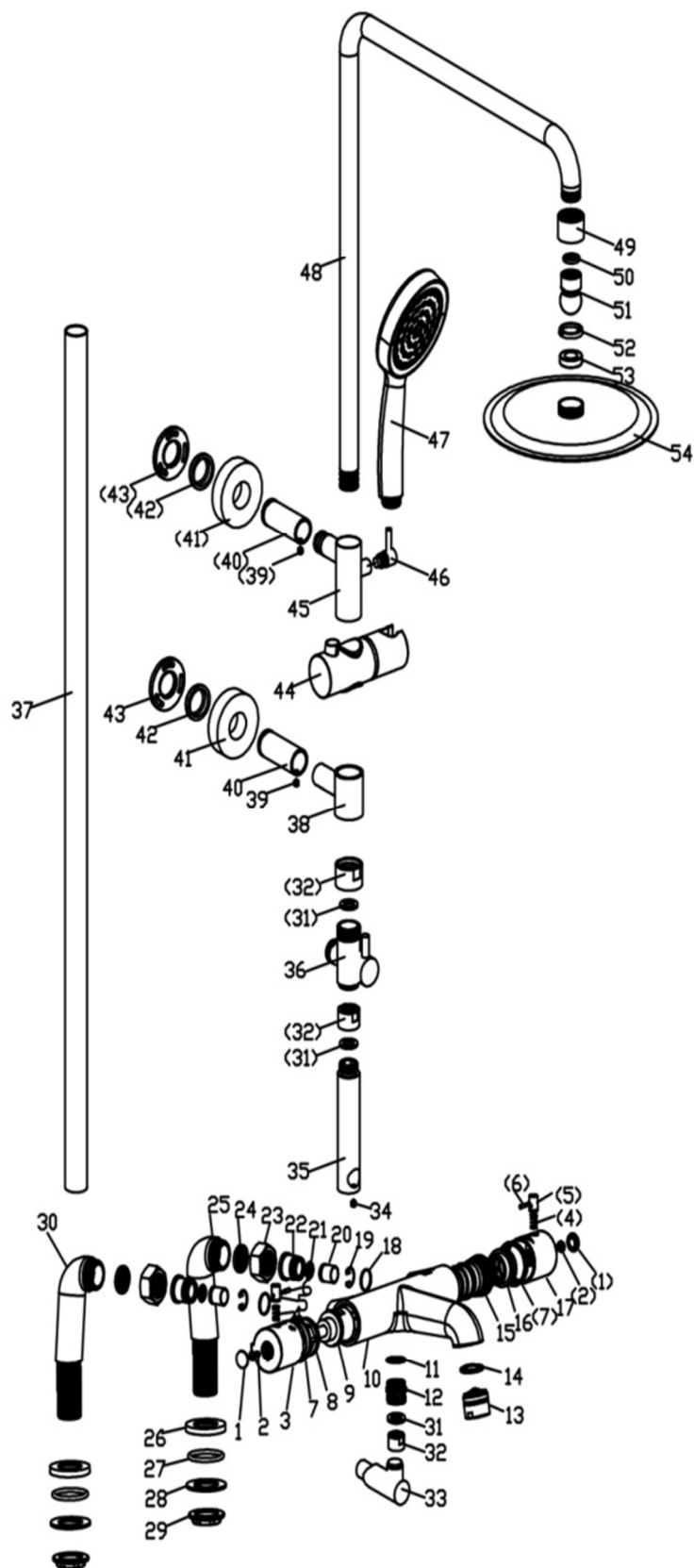
System Pressure	0.1 Bar	0.2 Bar	0.3 Bar	0.5 Bar	1.0 Bar	1.5 Bar	2.0 Bar	3.0 Bar	4.0 Bar	5.0 Bar
LO/298/C	3.2	4.6	5.5	7.3	10.3	12.7	14.5	17.8	20.6	23.0

The information contained on this page was correct at the date of issue. Fitting dimensions are provided as a guide only. Some variation may occur due to manufacturing tolerances. We pursue a policy of continuing improvement in design and performance of our products and so reserve the right to change specifications without prior notice

FOR FURTHER ADVICE PLEASE CONTACT :-

SAGITTARIUS LTD UNIT 1 LOWER VICTORIA STREET—CHADDERTON—OLDHAM—OL9 9TU TEL:0616 6202029

EMAIL:TECHNICAL@SAGITTARIUSTAPS.CO.UK



30	ELBOW-CONNECTOR	1
29	BACKNUT	2
28	WASHER	2
27	O-RING	2
26	BASE-PLATE	2
25	ELBOW-CONNECTOR	1
24	FILTER-WASHER	2
23	NUT	2
22	CONNECTOR	2
21	FILTER	2
20	CHECK-VALVE	2
19	CLAMP-RING	2
18	O-RING	2
17	THERMO-HANDLE	1
16	MOUNTING-WASHER	1
15	THERMO-CARTRIDGE	1
14	WASHER	1
13	AERATOR	1
12	G1/2-CONNECTOR	1
11	O-RING	1
10	BODY	1
9	FLOW-CARTRIDGE	1
8	CARTRIDGE-COVER	1
7	WASHER	1
6	STEM	2
5	BUTTON	2
4	SPRING	2
3	ON-OFF-HANDLE	1
2	SCREW	2
1	CAP	2
NO	NAME	QTY

54	SHOWER-HEAD	1
53	RUBBER-SEAL	1
52	WASHER	1
51	ROUND-NUT	1
50	FILTER	1
49	CONNECTOR	1
48	SPOUT	1
47	HANDSET	1
46	POSITIONING-HANDLE	1
45	UPPER-CONNECT-PIPE	1
44	HANDSET-HOLDER	1
43	FIXING-PLATE	2
42	WASHER	2
41	WALL-COVER	2
40	CONNECTOR	2
39	M5-GRUB	2
38	CONNECTING-PIPE	1
37	LONG-PIPE	1
36	DIVERTER	1
35	PIPE-CONNECTOR	1
34	M5-GRUB	1
33	CONNECTOR	1
32	G1/2-CONNECTOR	3
31	RUBBER-SEAL	3

The information contained on this page was correct at the date of issue. Fitting dimensions are provided as a guide only. Some variation may occur due to manufacturing tolerances.  
We pursue a policy of continuing improvement in design and performance of our products and so reserve the right to change specifications without prior notice

FOR FURTHER ADVICE PLEASE CONTACT :-  
SAGITTARIUS LTD UNIT 1 LOWER VICTORIA STREET—CHADDERTON—OLDHAM—OL9 9TU TEL:0616 6202029  
EMAIL:TECHNICAL@SAGITTARIUSTAPS.CO.UK