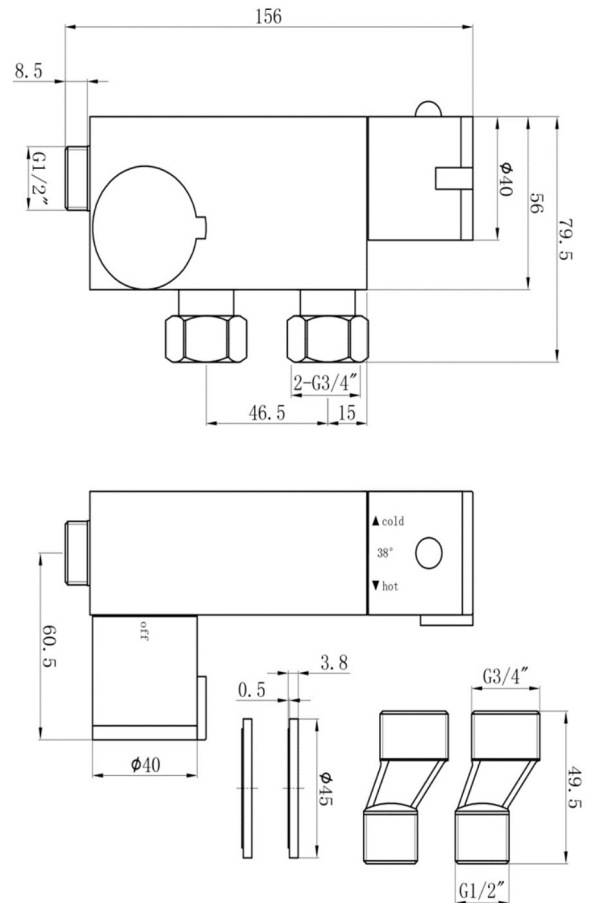


# SAGITTARIUS

## TAPS & SHOWERING

### LOGIK VERTICAL EXPOSED THERMO VALVE CHROME LO/163/C

<b>Construction</b>	Brass Body (CuZn38Pb18); ABS Handle
<b>Finishes</b>	Chrome plated to BS EN 248
<b>Product Type</b>	Contemporary
<b>Water Pressure</b>	Min. 1.0 bar, Max. 6.0 bar
<b>Plumbing Systems</b>	Suitable for all plumbing systems, preferably balanced. Min. supply pressure differential requirement is 5:1
<b>Standards</b>	Complies with BSEN 1111
<b>Certification</b>	-
<b>Cartridge</b>	Thermostatic
<b>Fitting</b>	S union connectors
<b>Check valve</b>	0.5-10 gpm
<b>Packaging</b>	57 x 23 x 22cm / carton (10 boxes / carton)
<b>Guarantee</b>	10 years against manufacturing faults (excluding serviceable parts).
<b>Additional Information</b>	1. Temperature: Pre-set 38°C, with push button override to 48°C. 2. Automatic shut off in the event of hot or cold water supply failure.



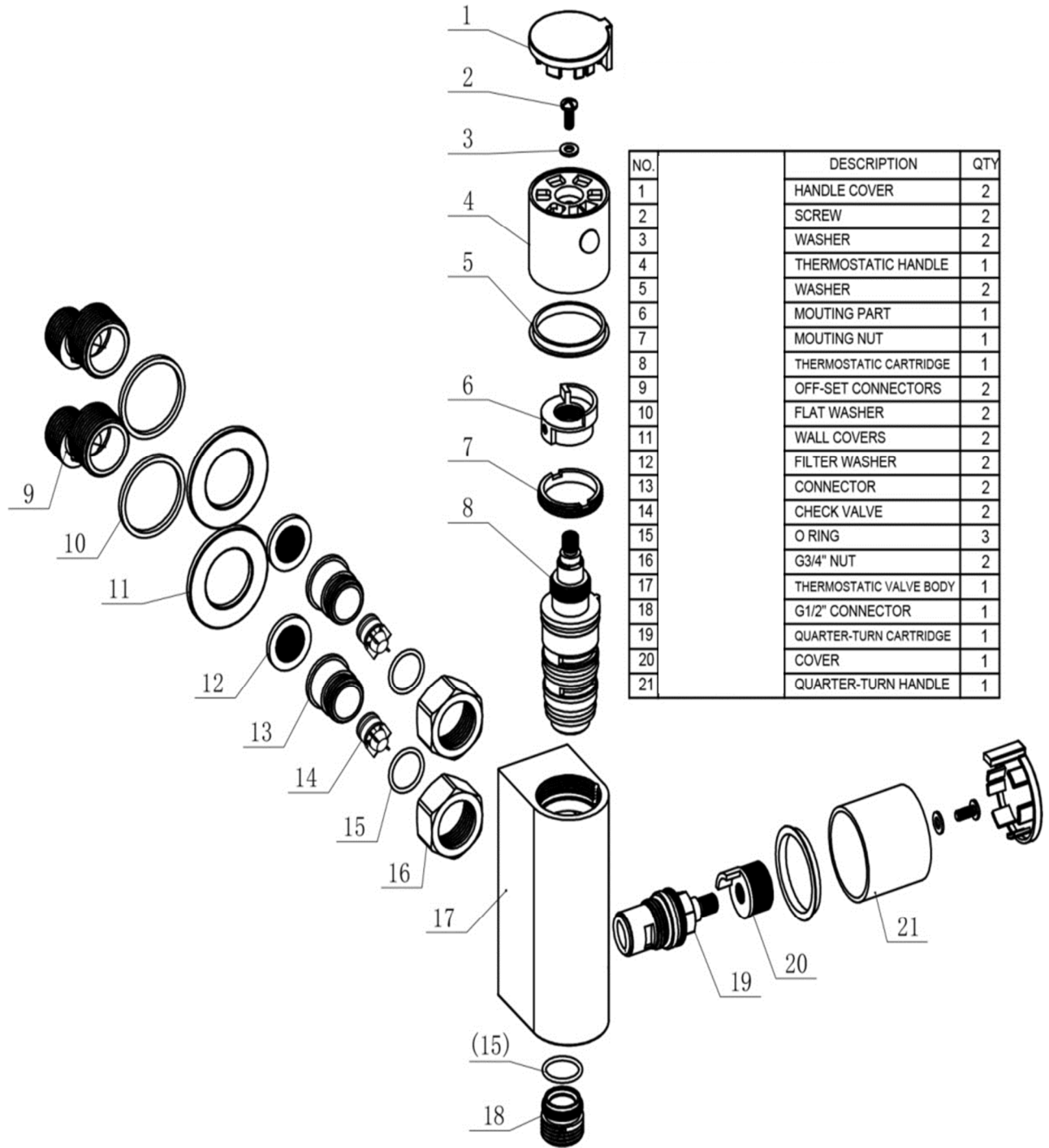
### Flow Rates (Litres per minute)

System Pressure	0.1 Bar	0.2 Bar	0.3 Bar	0.5 Bar	1.0 Bar	1.5 Bar	2.0 Bar	3.0 Bar	4.0 Bar	5.0 Bar
LO/163/C	-	2.5	-	4.8	8.5	-	-	14.5	-	-

The information contained on this page was correct at the date of issue. Fitting dimensions are provided as a guide only. Some variation may occur due to manufacturing tolerances. We pursue a policy of continuing improvement in design and performance of our products and so reserve the right to change specifications without prior notice

FOR FURTHER ADVICE PLEASE CONTACT :-  
SAGITTARIUS LTD UNIT 1 LOWER VICTORIA STREET—CHADDERTON—OLDHAM—OL9 9TU TEL:0616 6202029  
EMAIL:TECHNICAL@SAGITTARIUSTAPS.CO.UK

LO/163/C EXPLOADED DRAWING



NO.	DESCRIPTION	QTY
1	HANDLE COVER	2
2	SCREW	2
3	WASHER	2
4	THERMOSTATIC HANDLE	1
5	WASHER	2
6	MOUNTING PART	1
7	MOUNTING NUT	1
8	THERMOSTATIC CARTRIDGE	1
9	OFF-SET CONNECTORS	2
10	FLAT WASHER	2
11	WALL COVERS	2
12	FILTER WASHER	2
13	CONNECTOR	2
14	CHECK VALVE	2
15	O RING	3
16	G3/4" NUT	2
17	THERMOSTATIC VALVE BODY	1
18	G1/2" CONNECTOR	1
19	QUARTER-TURN CARTRIDGE	1
20	COVER	1
21	QUARTER-TURN HANDLE	1

The information contained on this page was correct at the date of issue. Fitting dimensions are provided as a guide only. Some variation may occur due to manufacturing tolerances. We pursue a policy of continuing improvement in design and performance of our products and so reserve the right to change specifications without prior notice

FOR FURTHER ADVICE PLEASE CONTACT :-  
 SAGITTARIUS LTD UNIT 1 LOWER VICTORIA STREET—CHADDERTON—OLDHAM—OL9 9TU TEL:0616 6202029  
 EMAIL:TECHNICAL@SAGITTARIUSTAPS.CO.UK