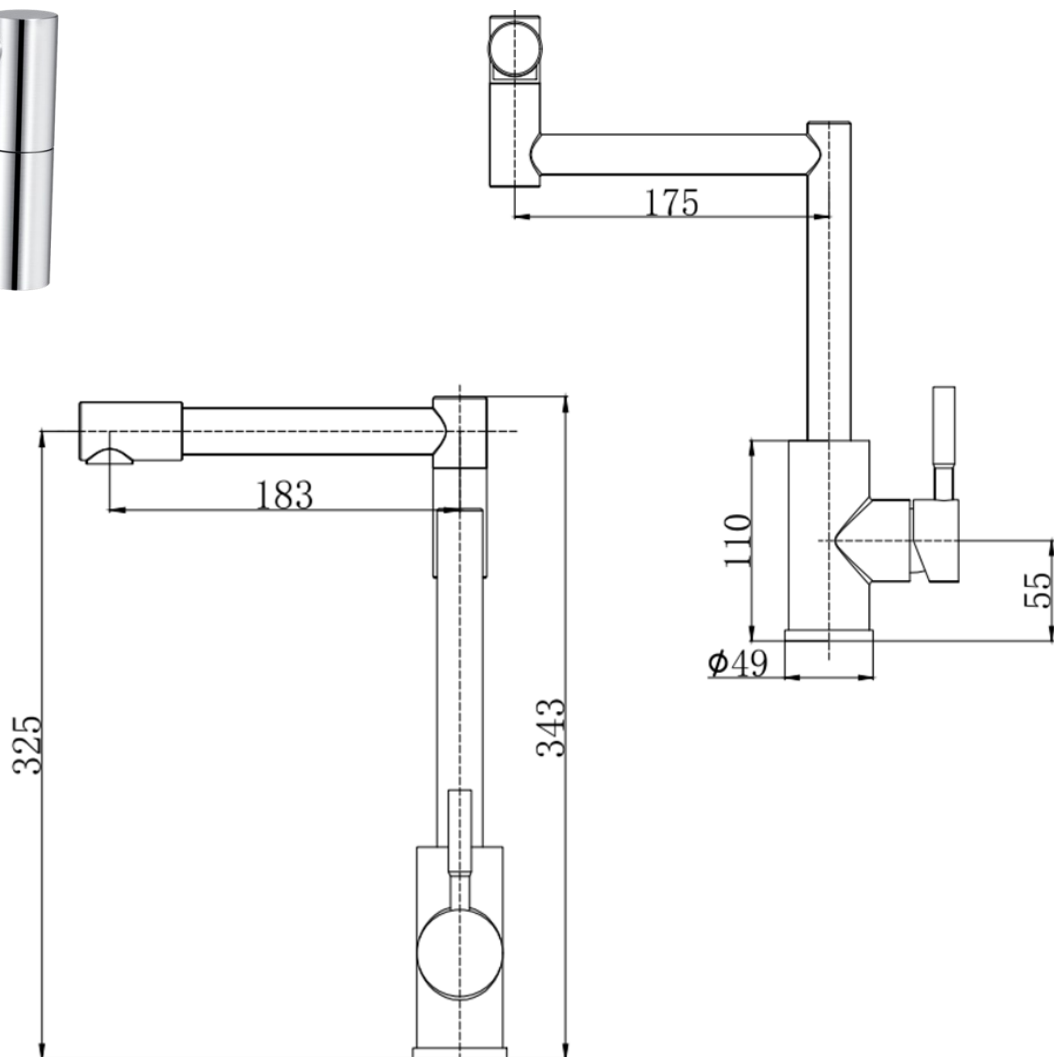


SAGITTARIUS

Product Code	KTS/257/C
Description	Vipiteno Monobloc Pot Filler
Finish	Chrome
Design	Contemporary
Connection	M10 x G1/2" 600mm Female Flexible Connection Tails
Plumbing System	High Pressure. Pumped Or Combination Boiler
Operating System	Minimum Pressure 1.0 to 5.0 Bar
Cartridges	35mm Ceramic Disc Cartridge
Approval	WRAS Approved Materials
Guarantee	10 Years On Casting & Chrome Finish. 3 Years On Serviceable Moving Parts.



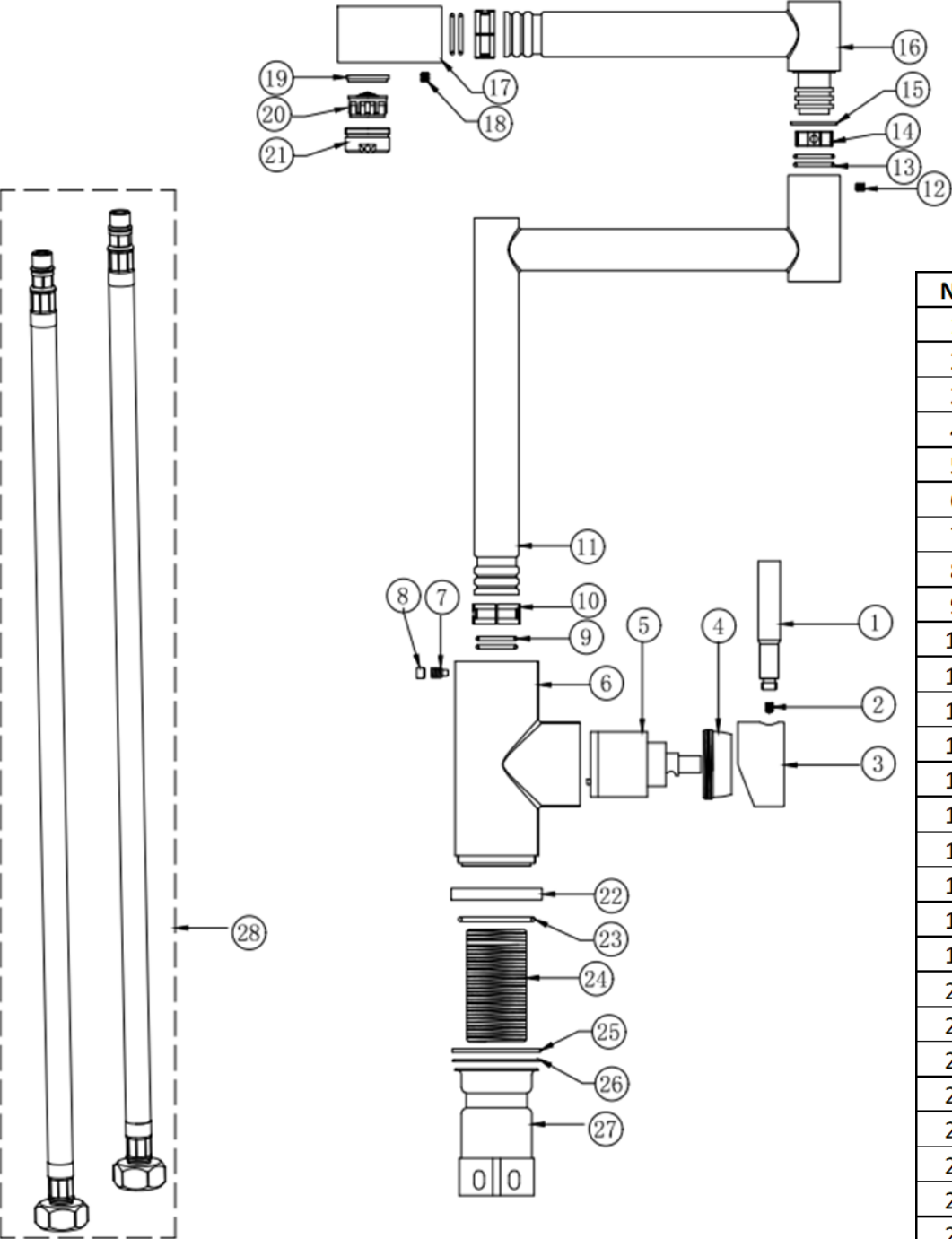
The information contained on this page was correct at the date of issue. Fitting dimensions are provided as a guide only. Some variation may occur due to manufacturing tolerances. We pursue a policy of continuing improvement in design and performance of our products and so reserve the right to change specifications without prior notice

FOR FURTHER ADVICE PLEASE CONTACT :-

SAGITTARIUS LTD UNIT 1 LOWER VICTORIA STREET—CHADDERTON—OLDHAM—OL9 9TU TEL: 0161 6202029

Flow Rates (Litres per minute)

System Pressure	0.1 Bar	0.2 Bar	0.3 Bar	0.5 Bar	1.0 Bar	1.5 Bar	2.0 Bar	3.0 Bar	4.0 Bar	5.0 Bar
KTS/257/C	-	-	-	-	6.6	-	-	11.5	-	15.1



NO	Description	QTY
1	Handle lever	1
2	Grab screw	1
3	Handle body	1
4	Collar + lock nut	1
5	35mm low Cartridge	1
6	Body	1
7	Grab screw	1
8	Indice cap	1
9	O-ring	4
10	Wear-resistant Ring	2
11	Spout arm	1
12	Grab screw	1
13	O-ring	2
14	Plastic nut	1
15	Wear-resistant Ring	1
16	Spout arm	1
17	Outlet connector	1
18	Grab screw	1
19	Washer	1
20	Aerator	1
21	Aerator cap	1
22	Base plate	1
23	O-ring	1
24	BSP fitting	1
25	Washer	1
26	Stainless steel Washer	1
27	Stainless steel lock nut	1
28	Flexi tail	2

The information contained on this page was correct at the date of issue. Fitting dimensions are provided as a guide only. Some variation may occur due to manufacturing tolerances. We pursue a policy of continuing improvement in design and performance of our products and so reserve the right to change specifications without prior notice

FOR FURTHER ADVICE PLEASE CONTACT :-
SAGITTARIUS LTD UNIT 1 LOWER VICTORIA STREET—CHADDERTON—OLDHAM—OL9 9TU TEL:0161 6202029