

TAPS & SHOWERING

Brass Body
(CuZn40Pb18); Zinc-
alloy Handles
Chrome plated to BS
EN 248

Contemporary
Min. 0.5 bar, Max. 6.0
bar

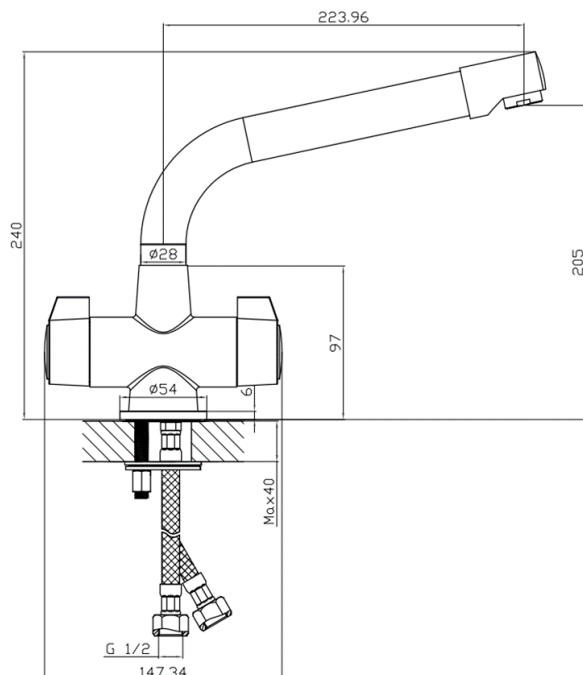
Complies with
BS5412, BS EN200
WRAS (1801020) ap-
proved and certified
1/4 Turn 1/2" Ceram-
ic disc valves

Spout aerator
G1/2" BSP Female
Flexible inlet connec-
tion hoses

10 years against
manufacturing faults
(excluding servicea-
ble parts)

360° Swivel Spout

Guarantee



The information contained on this page was correct at the date of issue. Fitting dimensions are provided as a guide only. Some variation may occur due to manufacturing tolerances.

We pursue a policy of continuing improvement in design and performance of our products and so reserve the right to change specifications without prior notice.

FOR FURTHER ADVICE PLEASE CONTACT :-

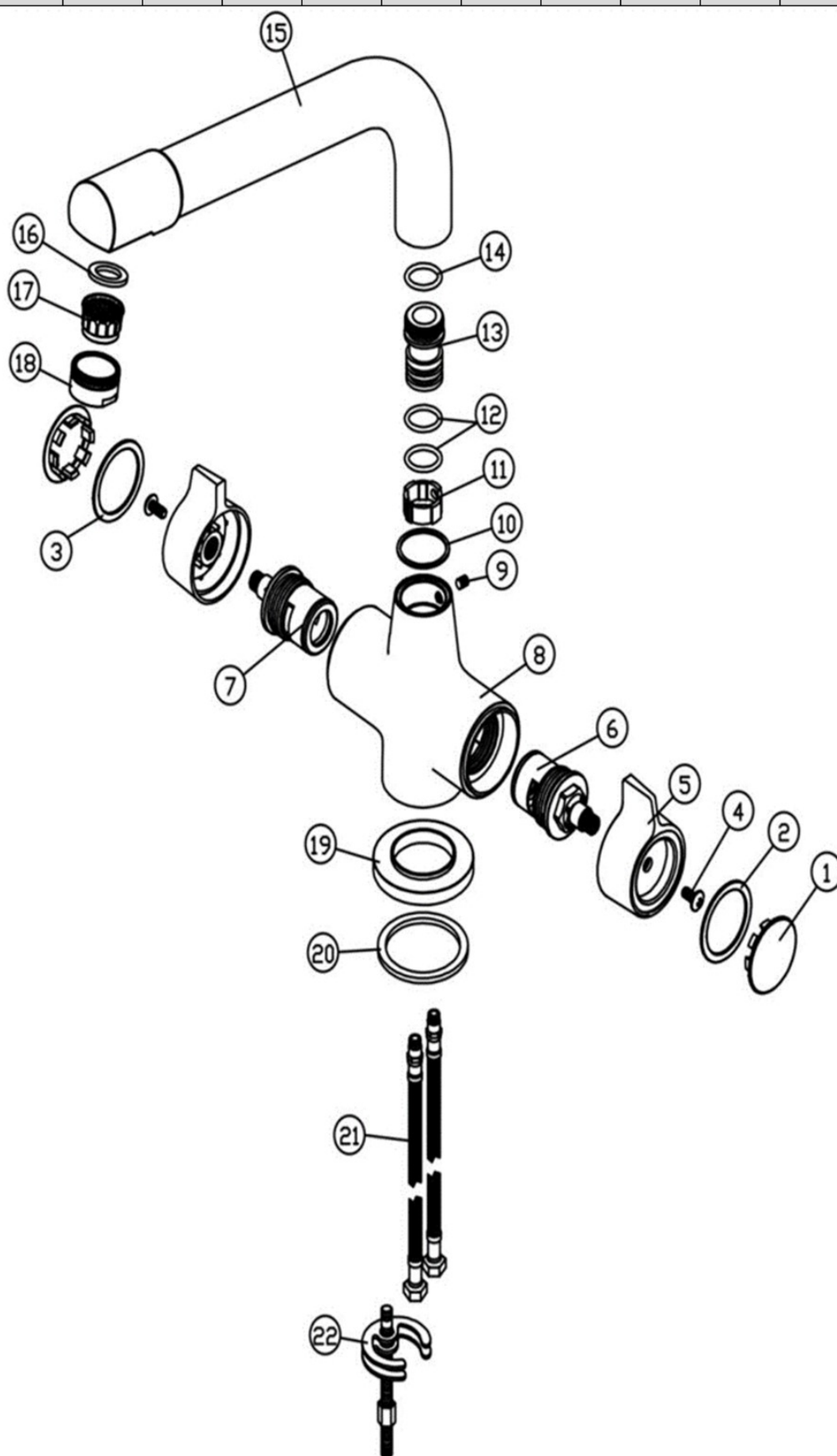
SAGITTARIUS LTD UNIT 1 LOWER VICTORIA STREET—CHADDERTON—OLDHAM—OL9 9TU TEL:0616 6202029

EMAIL:TECHNICAL@SAGITTARIUSTAPS.CO.UK

Flow Rates (Litres per minute)

System Pressure	0.1 Bar	0.2 Bar	0.3 Bar	0.5 Bar	1.0 Bar	1.5 Bar	2.0 Bar	3.0 Bar	4.0 Bar	5.0 Bar
	-	3.3	4.5	7.3	13.0	16.7	19.8	24.7	-	-

NO.	DESCRIPTION	QTY
1	HANDLE COVER	2
2	RED RING	1
3	BLUE RING	1
4	CROSS SCREW	2
5	HANDLE	2
6	G3/4" 1/4 TURN COLD CARTRIDGE	1
7	G3/4" 1/4 TURN HOT CARTRIDGE	1
8	TAP BODY	1
9	FLAT SCREW	1
10	WASHER	1
11	CONNECTOR	1
12	"O" RING	2
13	SPOUT CONNECTOR	1
14	"O" RING	1
15	SPOUT	1
16	WASHER	1
17	AERATOR	1
18	NOZZLE	1
19	BASE PLATE	1
20	WASHER	1
21	M10*1*350 FLEXI TAILS	2
22	M8 FIXING KIT	1



FOR FURTHER ADVICE PLEASE CONTACT :-

SAGITTARIUS LTD UNIT 1 LOWER VICTORIA STREET—CHADDERTON—OLDHAM—OL9 9TU TEL:0616 6202029

EMAIL:TECHNICAL@SAGITTARIUSTAPS.CO.UK