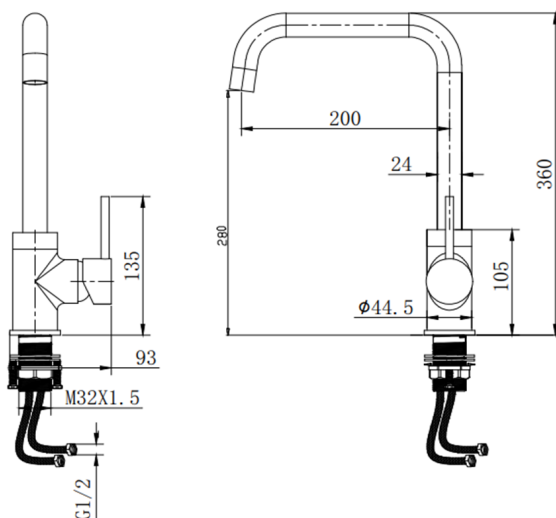


SAGITTARIUS

TAPS & SHOWERING

AMALFI SIDE LEVER MIXER KTS/210

Construction	Brass Body (CuZn40Pb18); Zinc alloy handle
Finishes	Chrome plated to BS EN 248
Product Type	Contemporary
Water Pressure Tested Between	Min. 0.2 bar, Max. 6.0 bar
Standards	Complies with BS5412, BS EN200
Cartridge	35mm Ceramic disc cartridge
Fitting	Flexible connection pipes
Aerator	Spout aerator
Guarantee	10 years against manufacturing faults (excluding serviceable parts)
Additional Information	360° Swivel Spout



The information contained on this page was correct at the date of issue. Fitting dimensions are provided as a guide only. Some variation may occur due to manufacturing tolerances. We pursue a policy of continuing improvement in design and performance of our products and so reserve the right to change specifications without prior notice

FOR FURTHER ADVICE PLEASE CONTACT :-

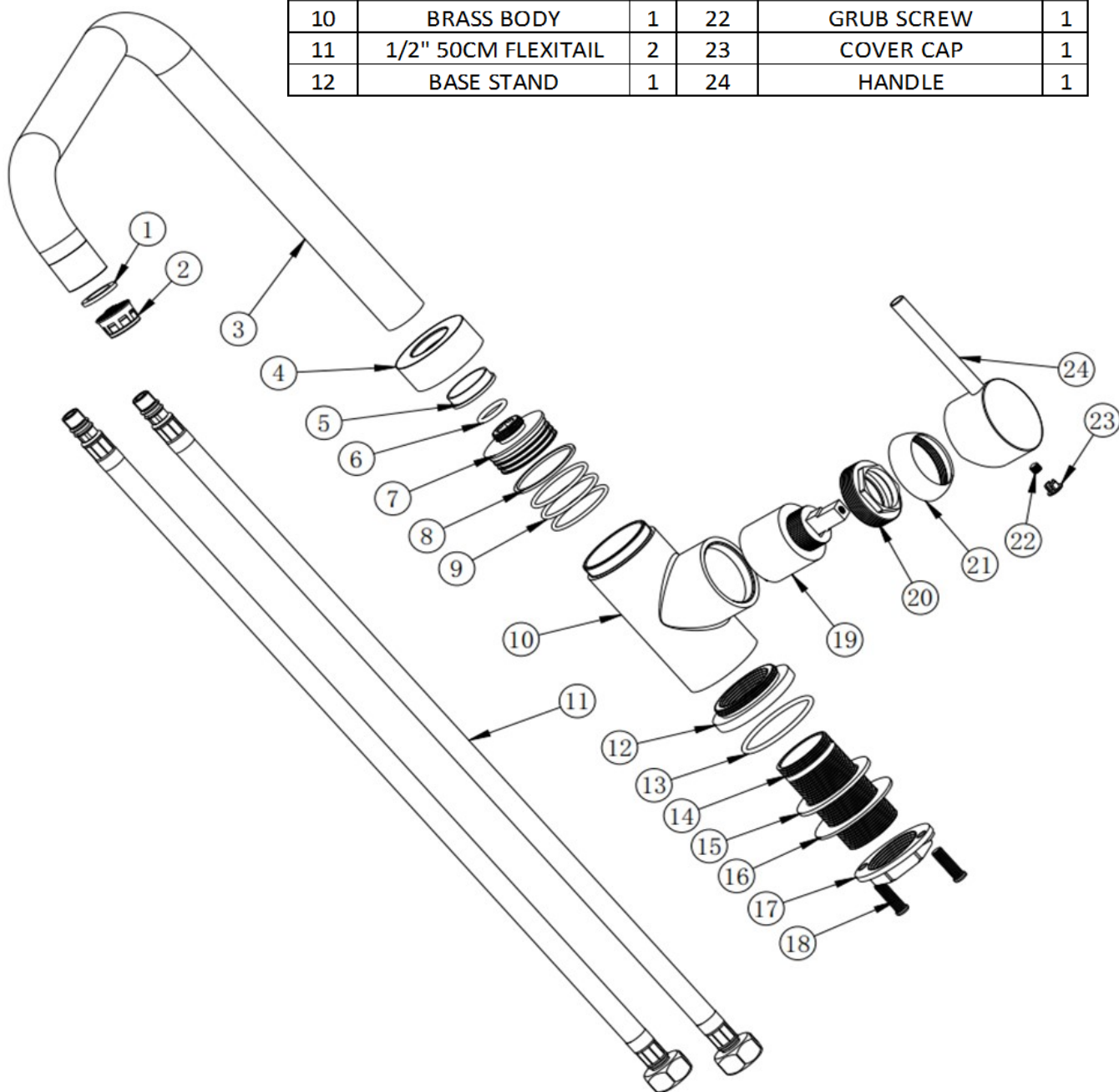
SAGITTARIUS LTD UNIT 1 LOWER VICTORIA STREET—CHADDERTON—OLDHAM—OL9 9TU TEL:0616 6202029

EMAIL:TECHNICAL@SAGITTARIUSTAPS.CO.UK

Flow Rates (Litres per minute)

System Pressure	0.1 Bar	0.2 Bar	0.3 Bar	0.5 Bar	1.0 Bar	1.5 Bar	2.0 Bar	2.5 Bar	3.0 Bar	5.0 Bar
	2.8	3.2	3.9	5.4	7.5	9.1	11.0	12.9	14.8	16.6

1	WASHER	1	13	O-RING	1
2	NEOPERL ARETOR	1	14	STAINLESS STEEL PIPE	1
3	SPOUT	1	15	WASHER	1
4	COVER PLATE	1	16	STAINLESS STEEL RING	1
5	WASHER	1	17	SCREW	1
6	O-RING	1	18	SCREW	2
7	PIPE CONNECTOR	1	19	CARTRIDGE	1
8	O-RING	1	20	CARTRIDGE LOCK NUT	1
9	O-RING	3	21	HANDLE COLLAR	1
10	BRASS BODY	1	22	GRUB SCREW	1
11	1/2" 50CM FLEXITAIL	2	23	COVER CAP	1
12	BASE STAND	1	24	HANDLE	1



FOR FURTHER ADVICE PLEASE CONTACT :-

SAGITTARIUS LTD UNIT 1 LOWER VICTORIA STREET—CHADDERTON—OLDHAM—OL9 9TU TEL:0616 6202029

EMAIL:TECHNICAL@SAGITTARIUSTAPS.CO.UK