

# SAGITTARIUS

## TAPS & SHOWERING

### Construction

Brass Body & Base plate; Zinc-alloy & Handle

### Finishes

Chrome plated to BS EN 248

### Product Type

Contemporary

### Water Pressure Tested Between

Min. 0.2 bar, Max. 6.0 bar

### Standards

Complies with BS5412, BS EN200

### Cartridge

WANHAI 35mm Ceramic disc cartridge

### Fitting

G1/2" BSP Female Flexible inlet connection hoses

### Aerator

Spout aerator

### Guarantee

10 years against manufacturing faults (excluding serviceable parts)

### Additional Information

1. Pull-out spray function with 153cm Pull-out hose
2. Select 2 modes, Chrome , Plastic Spray head
3. Rubber and brass braided kink-resistant hose
4. 360° Swivel Spout

## TRIESTE PROFESSIONAL SINK MIXER KPO/283

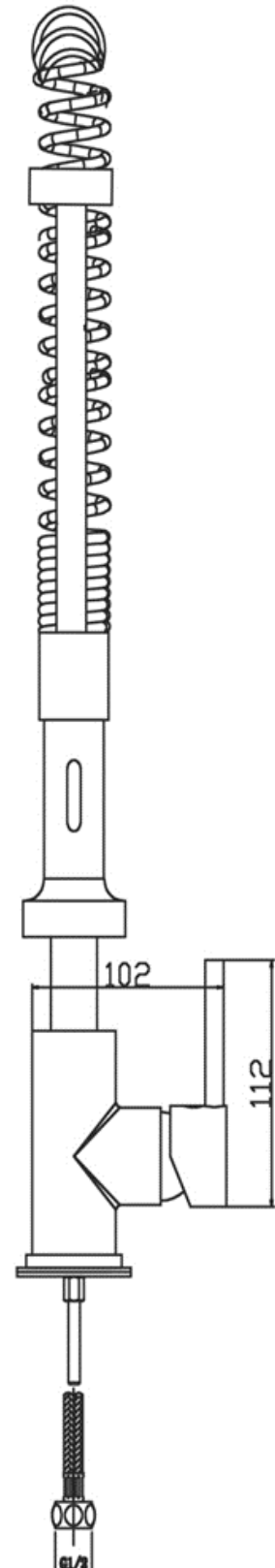
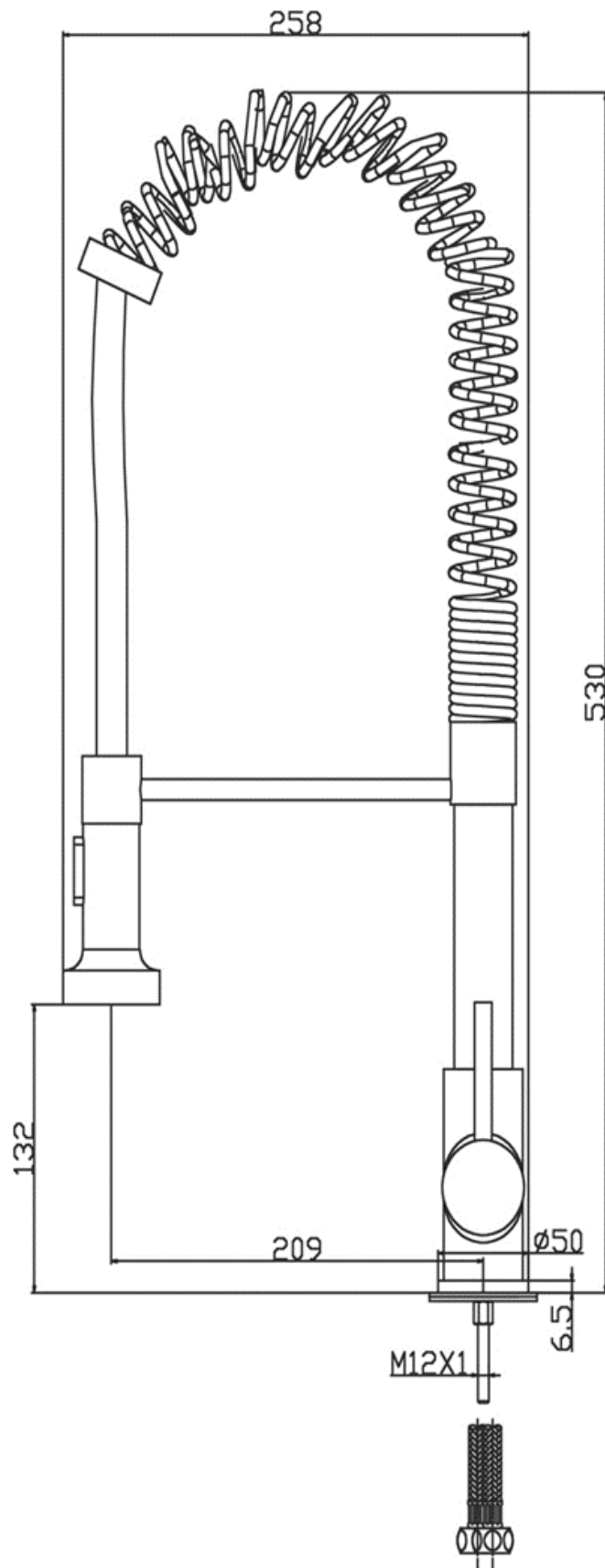


The information contained on this page was correct at the date of issue. Fitting dimensions are provided as a guide only. Some variation may occur due to manufacturing tolerances. We pursue a policy of continuing improvement in design and performance of our products and so reserve the right to change specifications without prior notice

FOR FURTHER ADVICE PLEASE CONTACT :-

SAGITTARIUS LTD UNIT 1 LOWER VICTORIA STREET—CHADDERTON—OLDHAM—OL9 9TU TEL:0616 6202029

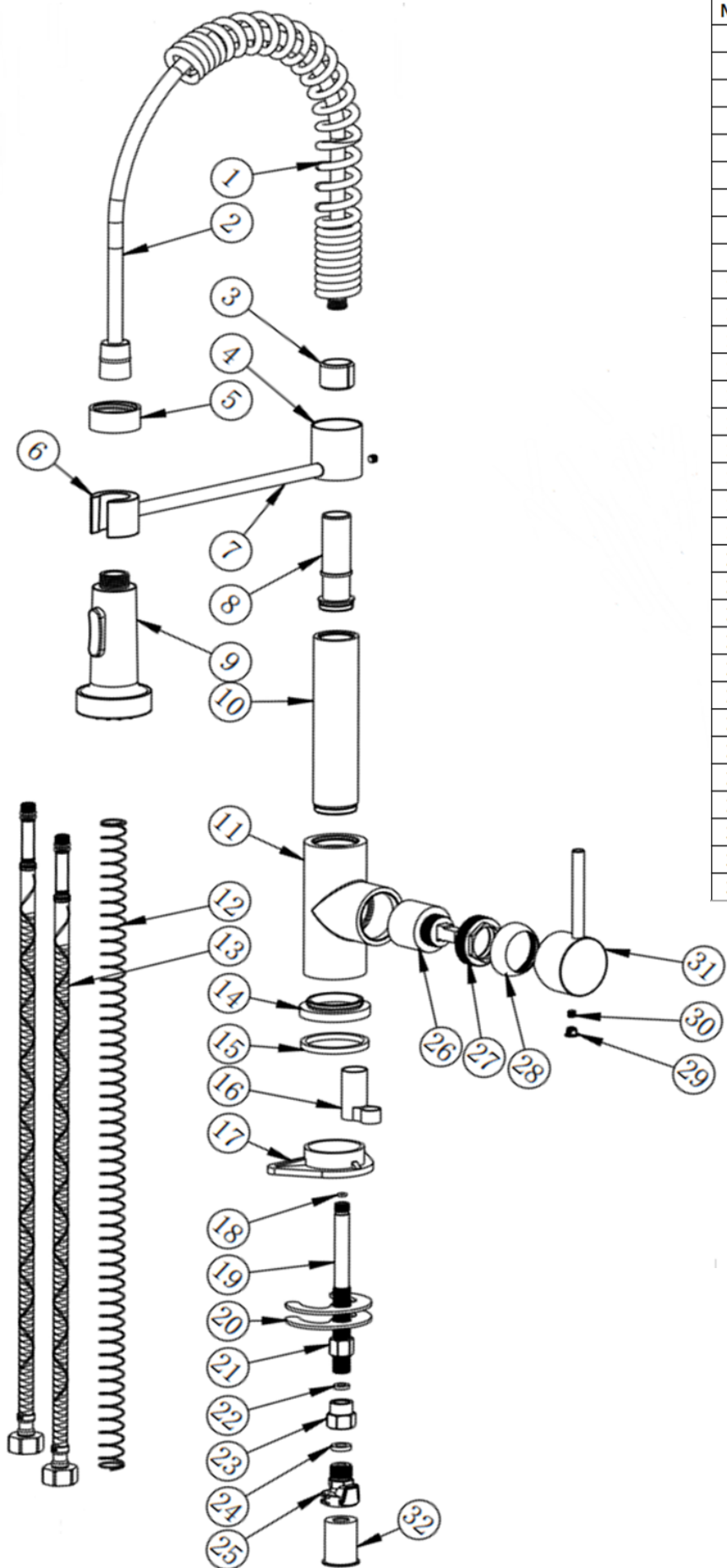
EMAIL:TECHNICAL@SAGITTARIUSTAPS.CO.UK



#### Flow Rates (Litres per minute)

System Pressure	0.1 Bar	0.2 Bar	0.3 Bar	0.5 Bar	1.0 Bar	1.5 Bar	2.0 Bar	3.0 Bar	4.0 Bar	5.0 Bar
	-	-	-	2.6	3.5	-	-	6.0	-	7.6

FOR FURTHER ADVICE PLEASE CONTACT :-  
 SAGITTARIUS LTD UNIT 1 LOWER VICTORIA STREET—CHADDERTON—OLDHAM—OL9 9TU TEL:0616 6202029  
 EMAIL:TECHNICAL@SAGITTARIUSTAPS.CO.UK



NO.	ITEM	QTY
1	Ø32.5 S/STEEL SS304 PULL-OUT HOSE CASING	1
2	G1/2"1.53M RUBBER & BRASS PULL-OUT HOSE	1
3	Ø24*Ø19*19 PLASTIC INSERT	1
4	Ø36*39 BRASS SPRAY HEAD HOLDER CONNECTOR	1
5	Ø36*15 BRASS SPRAY HEAD COLLAR	1
6	Ø34*28 BRASS SPRAY HEAD HOLDER	1
7	Ø10*186 BRASS HOLDER CONNECTOR ROD	1
8	Ø26*72 BRASS SPOUT CONNECTOR	1
9	Ø53 PLASTIC SPRAY HEAD 2 MODES	1
10	Ø32*135 BRASS SPOUT CONNECTOR TUBE	1
11	BRASS TAP BODY	1
12	Ø18*Ø1*80CM S/STEEL SPRING	1
13	G1/2" BSP 500mm S/STEEL FLEXITAIL	2
14	Ø50*11.5 BRASS BASE PLATE	1
15	Ø48*Ø41.5*4.3 RUBBER WASHER	1
16	18*37*33 PLASTIC HOSE HOLDER	1
17	85*55*17 PLASTIC TRIANGLE FIXING PLATE	1
18	Ø7*1.5 NBR O-RING	1
19	Ø12*130 BRASS FAST-FIT CONNECTOR FIXING ROD	1
20	Ø61 HORSE-SHOE FIXING KIT	1
21	M12*12.5 BRASS FAST-FIT CONNECTOR FIXING NUT	1
22	Ø11*Ø6.1*2.3 RUBBER WASHER	1
23	18*19 BRASS PULL-OUT HOSE CONNECTOR	1
24	Ø14*Ø8*3 RUBBER WASHER	1
25	FAST-FIT CONNECTOR ASSEMBLY	1
26	35MM CERAMIC DISC CARTRIDGE	1
27	M37 BRASS CARTRIDGE LOCK NUT	1
28	M37 PLASTIC HANDLE COLLAR	1
29	Ø6.8 ABS COVER CAP	1
30	M5*5 S/STEEL HANDLE GRUB SCREW	2
31	Ø44*26 ZINC-ALLOY HANDLE	1
32	Ø26*33 POM SINGLE HOLE CASING	1

FOR FURTHER ADVICE PLEASE CONTACT :-

SAGITTARIUS LTD UNIT 1 LOWER VICTORIA STREET—CHADDERTON—OLDHAM—OL9 9TU TEL:0616 6202029

EMAIL:TECHNICAL@SAGITTARIUSTAPS.CO.UK