

SAGITTARIUS

TAPS & SHOWERING

Construction Brass Body (CuZn40Pb18); Zinc-alloy & Ceramic Handles

Finishes Chrome plated to BS EN 248

Product Type Contemporary

Water Pressure Tested Between Min. 0.5 bar, Max. 6.0 bar

Standards Complies with BS5412, BS EN200

Certification -

Cartridge 1/4 Turn 1/2" Ceramic disc valves

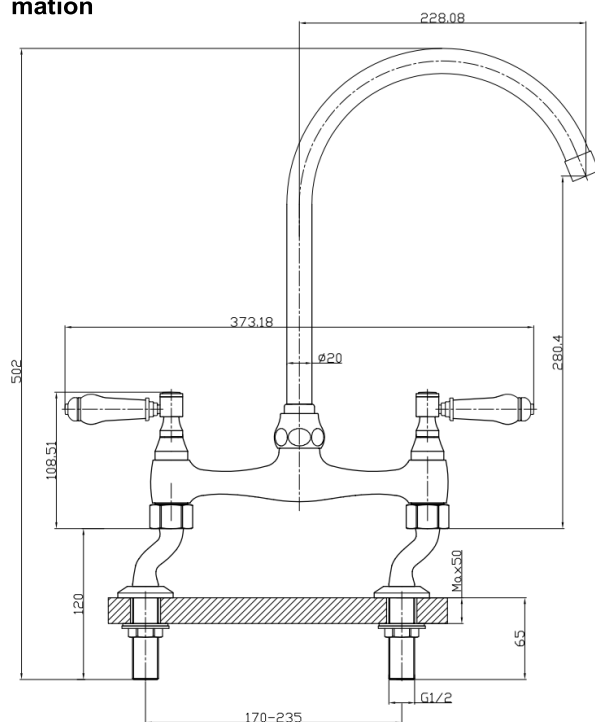
Fitting 10mm G1/2" BSP Flexible inlet connection hoses

Aerator Spout aerator

Guarantee 10 years against manufacturing faults (excluding serviceable parts)

Additional Information 360° Swivel Spout

KENSINGTON LEVER BRIDGE MIXER CHROME KL/290/C



The information contained on this page was correct at the date of issue. Fitting dimensions are provided as a guide only. Some variation may occur due to manufacturing tolerances. We pursue a policy of continuing improvement in design and performance of our products and so reserve the right to change specifications without prior notice

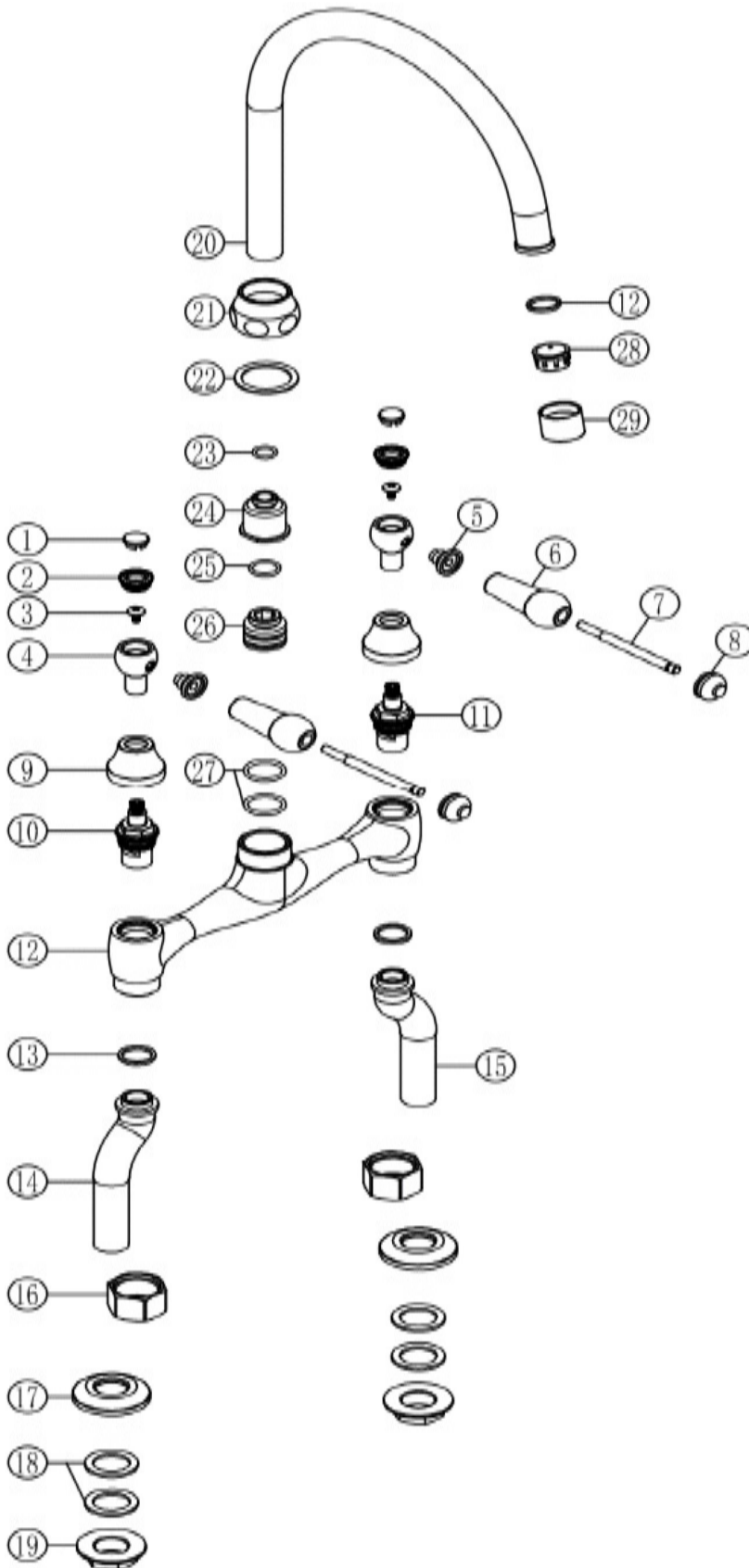
FOR FURTHER ADVICE PLEASE CONTACT :-

SAGITTARIUS LTD UNIT 1 LOWER VICTORIA STREET—CHADDERTON—OLDHAM—OL9 9TU TEL:0616 6202029

EMAIL:TECHNICAL@SAGITTARIUSTAPS.CO.UK

Flow Rates (Litres per minute)

System Pressure	0.1 Bar	0.2 Bar	0.3 Bar	0.5 Bar	1.0 Bar	1.5 Bar	2.0 Bar	3.0 Bar	4.0 Bar	5.0 Bar
	-	4.0	-	7.0	9.5	-	13.2	16.3	-	20.3



NO.	ITEM	QTY
1	INDICE CAP	2
2	INDICE	2
3	SCREW	2
4	HANDLE BODY	2
5	HANDLE CONNECTOR	2
6	CERAMIC HANDLE	2
7	HANDLE ROD	2
8	HANDLE END CAP	2
9	HANDLE COLLAR	2
10	HOT CARTRIDGE	1
11	COLD CARTRIDGE	1
12	TAP BODY	1
13	WASHER	2
14	HOT WATER ELBOW	1
15	COLD WATER ELBOW	1
16	BRASS LOCK NUT	2
17	ELBOW BASE PLATE	2
18	WASHER	4
19	PLASTIC LOCK NUT	2
20	SPOUT	1
21	SPOUT LOCK NUT	1
22	SPOUT WASHER	1
23	O-RING	1
24	SPOUT CHROMED CONNECTOR	1
25	O-RING	1
26	SPOUT CONNECTOR	1
27	O-RING	2
28	AERATOR	1
29	AERATOR CASING	1
30	AERATOR WASHER	1

FOR FURTHER ADVICE PLEASE CONTACT :-

SAGITTARIUS LTD UNIT 1 LOWER VICTORIA STREET—CHADDERTON—OLDHAM—OL9 9TU TEL:0616 6202029

EMAIL:TECHNICAL@SAGITTARIUSTAPS.CO.UK