

SAGITTARIUS

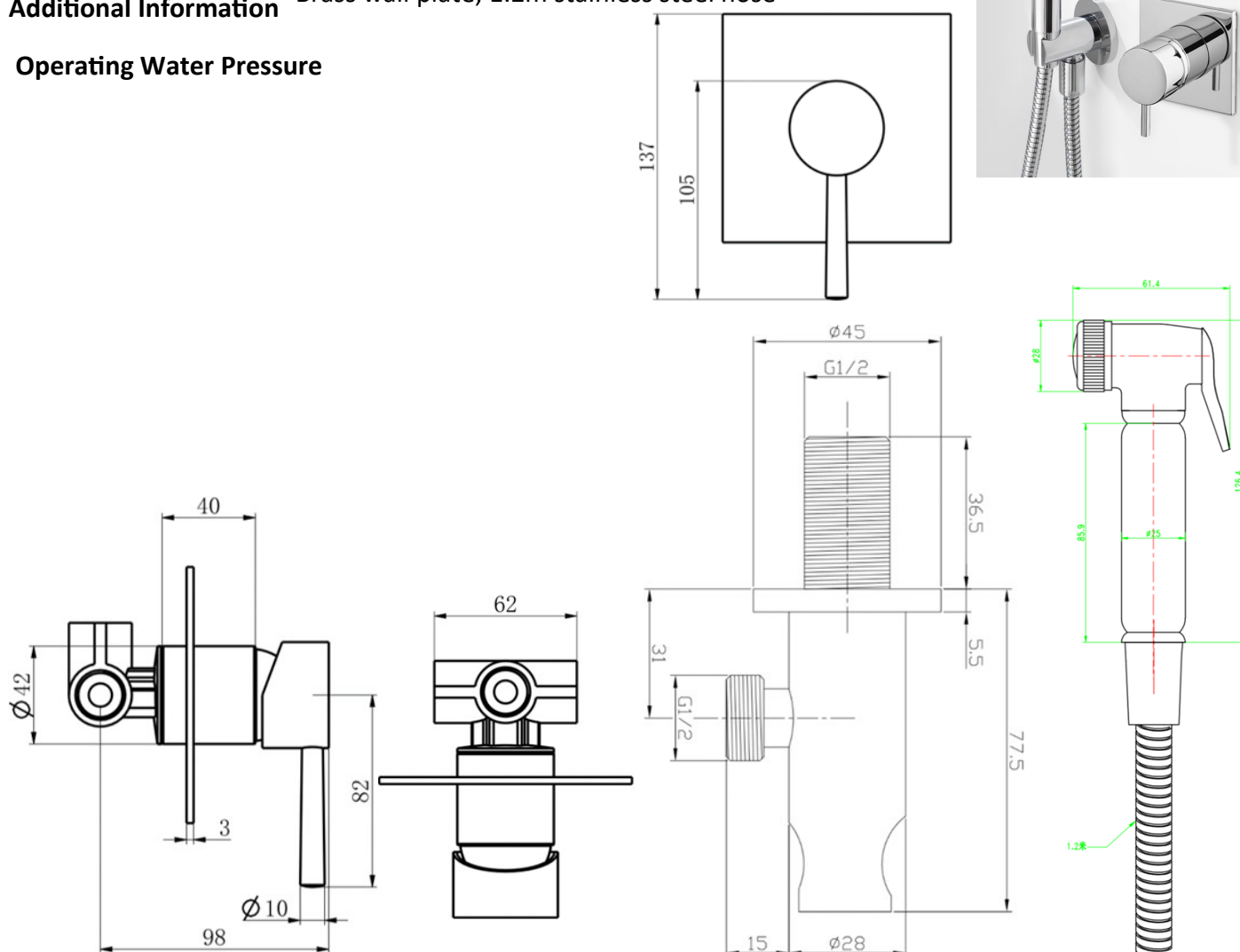
TAPS & SHOWERING

Construction	Brass Body, Zinc-alloy handle
Finishes	Chrome plated
Product Type	Contemporary
Water Pressure Tested Between	Min. 0.1 bar, Max. 5.0 bar
Cartridge Fitting	Ceramic disc valve & Push valve for handset Brass G1/2" BSP Female thread (Inlet and outlet)

Guarantee	1 years against manufacturing faults (excluding serviceable parts)
Additional Information	Brass wall plate; 1.2m stainless steel hose

Operating Water Pressure

DELUXE DOUCE KIT WITH OUTLET HND/651



The information contained on this page was correct at the date of issue. Fitting dimensions are provided as a guide only. Some variation may occur due to manufacturing tolerances. We pursue a policy of continuing improvement in design and performance of our products and so reserve the right to change specifications without prior notice

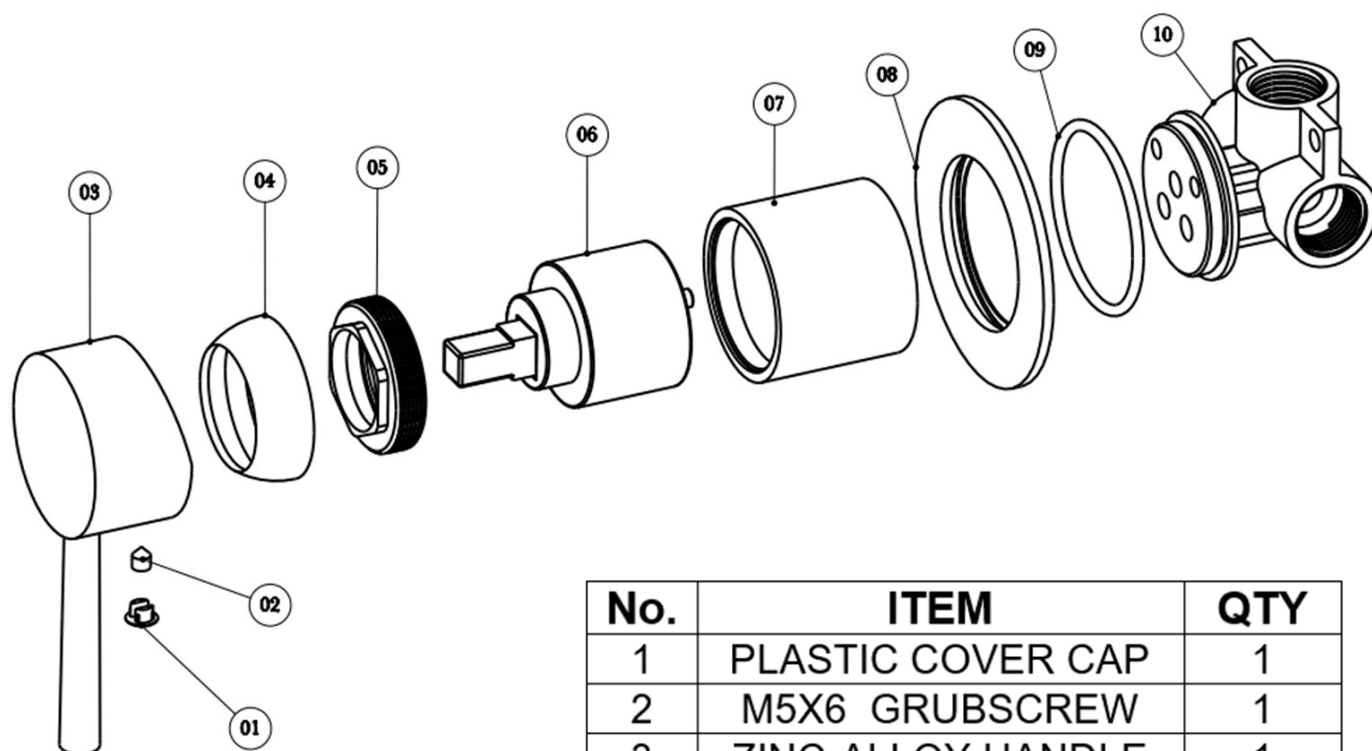
FOR FURTHER ADVICE PLEASE CONTACT :-

SAGITTARIUS LTD UNIT 1 LOWER VICTORIA STREET—CHADDERTON—OLDHAM—OL9 9TU TEL:0616 6202029

EMAIL:TECHNICAL@SAGITTARIUSTAPS.CO.UK

Flow Rates (Litres per minute)

System Pressure	0.1 Bar	0.2 Bar	0.3 Bar	0.5 Bar	1.0 Bar	1.5 Bar	2.0 Bar	3.0 Bar	4.0 Bar	5.0 Bar
	5.0	6.4	7.4	9.4	13.2	16.1	18.5	23.0	26.4	29.5



No.	ITEM	QTY
1	PLASTIC COVER CAP	1
2	M5X6 GRUBSCREW	1
3	ZINC-ALLOY HANDLE	1
4	HANDLE COLLAR	1
5	BRASS LOCK NUT	1
6	40MM CARTRIDGE	1
7	CARTRIDGE COVER	1
8	BRASS BASE PLATE	1
9	54*3 O-RING	1
10	VALVE BODY	1

FOR FURTHER ADVICE PLEASE CONTACT :-

SAGITTARIUS LTD UNIT 1 LOWER VICTORIA STREET—CHADDERTON—OLDHAM—OL9 9TU TEL:0616 6202029

EMAIL:TECHNICAL@SAGITTARIUSTAPS.CO.UK