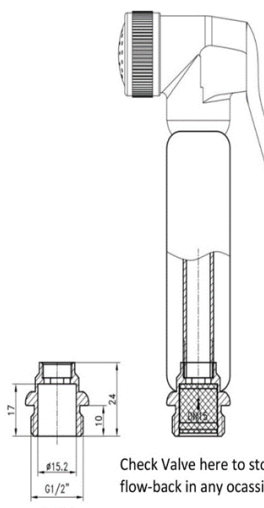
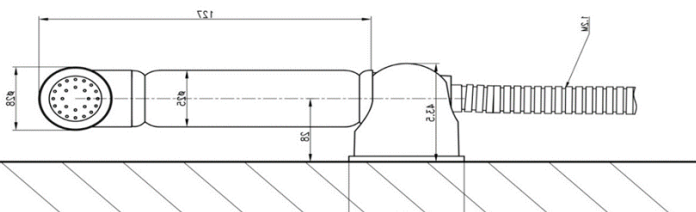
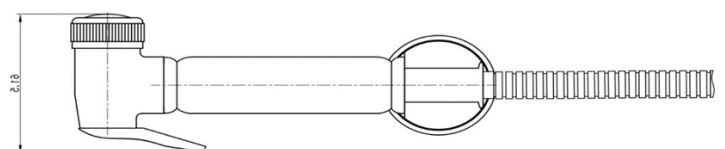


# SAGITTARIUS

## TAPS & SHOWERING

|                               |                                                                                                                                   |
|-------------------------------|-----------------------------------------------------------------------------------------------------------------------------------|
| <b>Construction</b>           | Brass Body (CuZn40Pb2), EN CW617N<br>(equivalent to BS CZ122);<br>ABS handle                                                      |
| <b>Finishes</b>               | Chrome plated to BS EN 248                                                                                                        |
| <b>Product Type</b>           | Contemporary                                                                                                                      |
| <b>Water Pressure</b>         | Min. 0.5 bar, Max. 5.0 bar                                                                                                        |
| <b>Tested Between</b>         |                                                                                                                                   |
| <b>Plumbing Systems</b>       | Suitable for all plumbing systems, preferably<br>balanced<br>Max. supply pressure differential requirement<br>no greater than 5:1 |
| <b>Cartridge</b>              | Push valve for handset                                                                                                            |
| <b>Fitting</b>                | G1/2" BSP Female thread                                                                                                           |
| <b>Guarantee</b>              | 1 years against manufacturing faults<br>(excluding serviceable parts)                                                             |
| <b>Additional Information</b> | Chrome Stainless steel 1.20m hose & Zinc-<br>alloy Wall bracket                                                                   |

**DELUXE DOUCHE SET**  
**CHROME**  
**HND/649/C**



Check Valve here to stop  
flow-back in any occasions

### Flow Rates (Litres per minute)

| System Pressure | 0.1 Bar | 0.2 Bar | 0.3 Bar | 0.5 Bar | 1.0 Bar | 1.5 Bar | 2.0 Bar | 3.0 Bar | 4.0 Bar | 5.0 Bar |
|-----------------|---------|---------|---------|---------|---------|---------|---------|---------|---------|---------|
|                 | -       | -       | -       | 2.2     | 3.1     | -       | 3.8     | 4.9     | 5.7     | 6.5     |

The information contained on this page was correct at the date of issue. Fitting dimensions are provided as a guide only. Some variation may occur due to manufacturing tolerances. We pursue a policy of continuing improvement in design and performance of our products and so reserve the right to change specifications without prior notice

FOR FURTHER ADVICE PLEASE CONTACT :-

SAGITTARIUS LTD UNIT 1 LOWER VICTORIA STREET—CHADDERTON—OLDHAM—OL9 9TU TEL:0616 6202029

EMAIL:TECHNICAL@SAGITTARIUSTAPS.CO.UK