

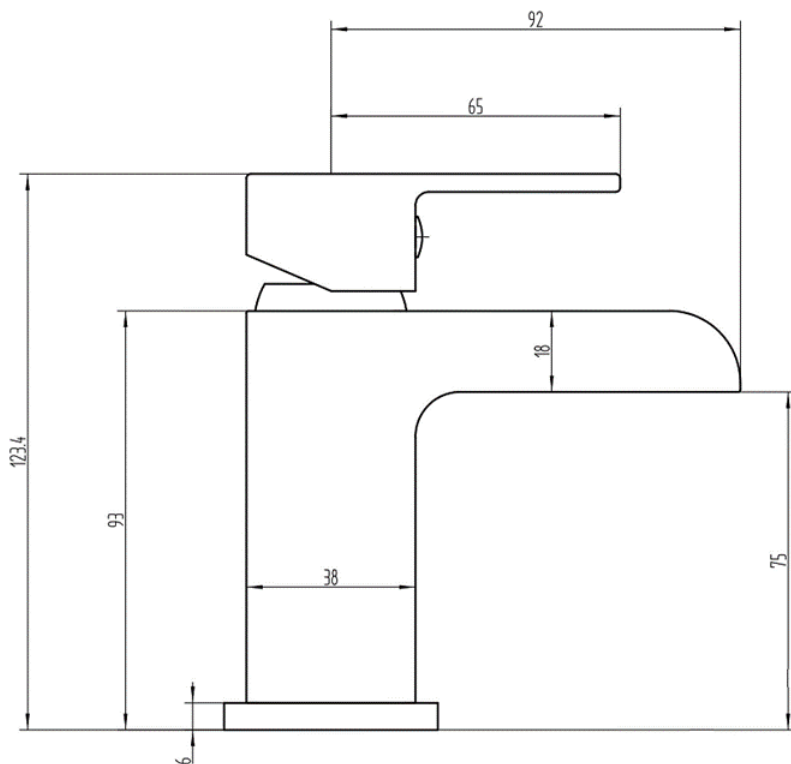
# SAGITTARIUS

## TAPS & SHOWERING

<b>Construction</b>	Brass Body (CuZn40Pb2), EN CW617N (equivalent to BS CZ122); Zinc-alloy Handle
<b>Finishes</b>	Chrome plated to BS EN 248
<b>Product Type</b>	Contemporary
<b>Water Pressure Tested Between</b>	Min. 0.1 bar, Max. 6.0 bar
<b>Standards</b>	Complies with BS6920, BS EN200
<b>Net Weight (Tap only)</b>	634g
<b>Cartridge</b>	30mm Ceramic disc cartridge
<b>Aerator Fitting</b>	Laminar spout with filter mesh UK: M10 x 350mm G $\frac{1}{2}$ " BSP Female Flexi Tails EU: M10 x 350mm G $\frac{3}{8}$ " BSP Female Flexi Tails
<b>Guarantee</b>	10 years against manufacturing faults (excluding serviceable parts)
<b>Additional Information</b>	Supplied with G $\frac{1}{4}$ " sprung waste (UK only)

### FLOW CLOAKROOM MON-OBLOC BASIN MIXER WITH POP UP WASTE

FL/186/C



The information contained on this page was correct at the date of issue.

Fitting dimensions are provided as a guide only. Some variation may occur due to manufacturing tolerances. We pursue a policy of continuing improvement in design and perfor-

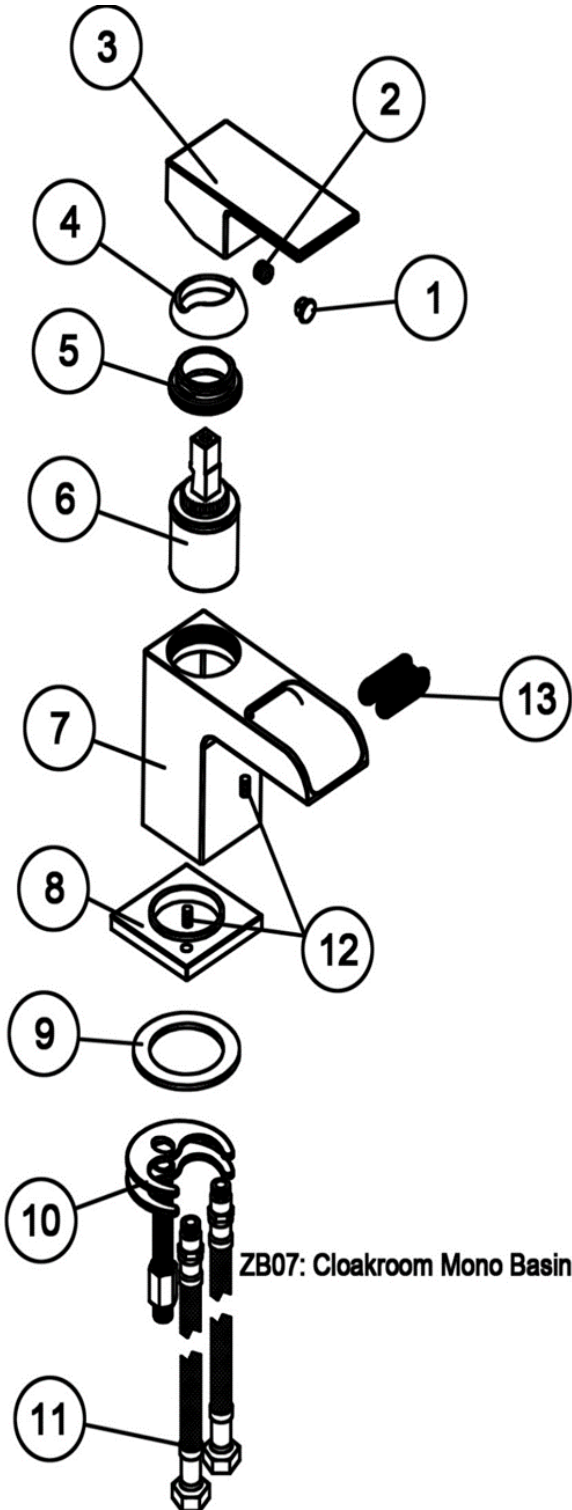
FOR FURTHER ADVICE PLEASE CONTACT :-

SAGITTARIUS LTD UNIT 1 LOWER VICTORIA STREET—CHADDERTON—OLDHAM—OL9 9TU TEL:0616 6202029

EMAIL:TECHNICAL@SAGITTARIUSTAPS.CO.UK

**Flow Rates** (Litres per minute)

System Pressure	0.1 Bar	0.2 Bar	0.3 Bar	0.5 Bar	1.0 Bar	1.5 Bar	2.0 Bar	3.0 Bar	4.0 Bar	5.0 Bar
	4.2	5.2	-	7.2	9.7	11.7	13.5	16.3	-	-



NO.	ITEM CODE	QTY
1	ZB07-01	1
2	ZB07-02	1
3	ZB07-03	1
4	ZB07-04	1
5	ZB07-05	1
6	ZB07-06	1
7	ZB07-07	1
8	ZB07-08	1
9	ZB07-09	1
10	ZB07-10	1
11	ZB07-11	2
12	ZB07-12	2
13	ZB07-13	1

FOR FURTHER ADVICE PLEASE CONTACT :-

SAGITTARIUS LTD UNIT 1 LOWER VICTORIA STREET—CHADDERTON—OLDHAM—OL9 9TU TEL:0616 6202029

EMAIL:TECHNICAL@SAGITTARIUSTAPS.CO.UK