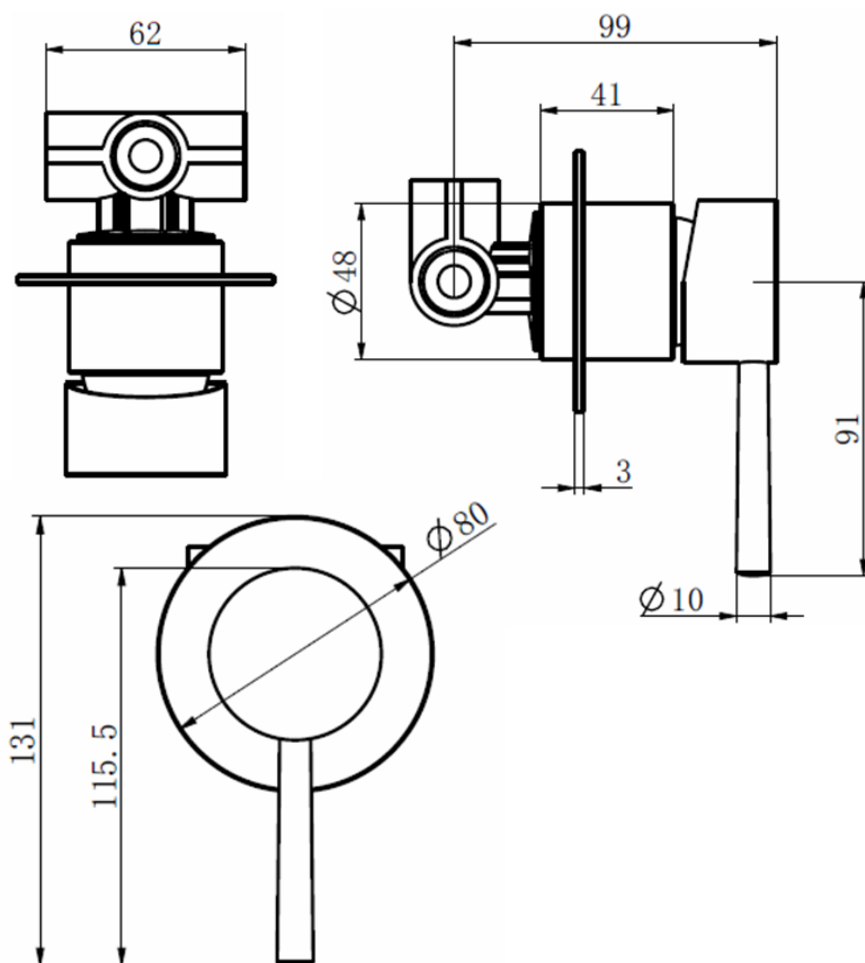
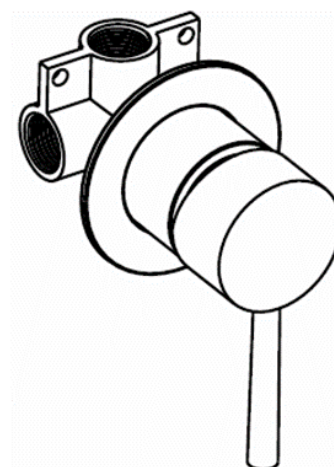


SAGITTARIUS

TAPS & SHOWERING

Construction	Brass Body (CuZn40Pb2), EN CW617N (equivalent to BS CZ122); Zinc-alloy Handle
Finishes	Chrome plated to BS EN 248
Product Type	Contemporary
Water Pressure Tested Between	Min. 0.2 bar (basin) 1.0 bar (bath), Max. 5.0 bar
Cartridge Fitting	40mm Ceramic disc cartridge Brass G1/2" BSP Female thread (Hot and Cold)
Guarantee	1 years against manufacturing faults (excluding serviceable parts)
Additional Information	Chrome Brass wall plate

ERGO LEVER CONCEALED MANUAL SHOWER VALVE EL/570/C



The information contained on this page was correct at the date of issue. Fitting dimensions are provided as a guide only. Some variation may occur due to manufacturing tolerances. We pursue a policy of continuing improvement in design and performance of our products and so reserve the right to change specifications without prior notice

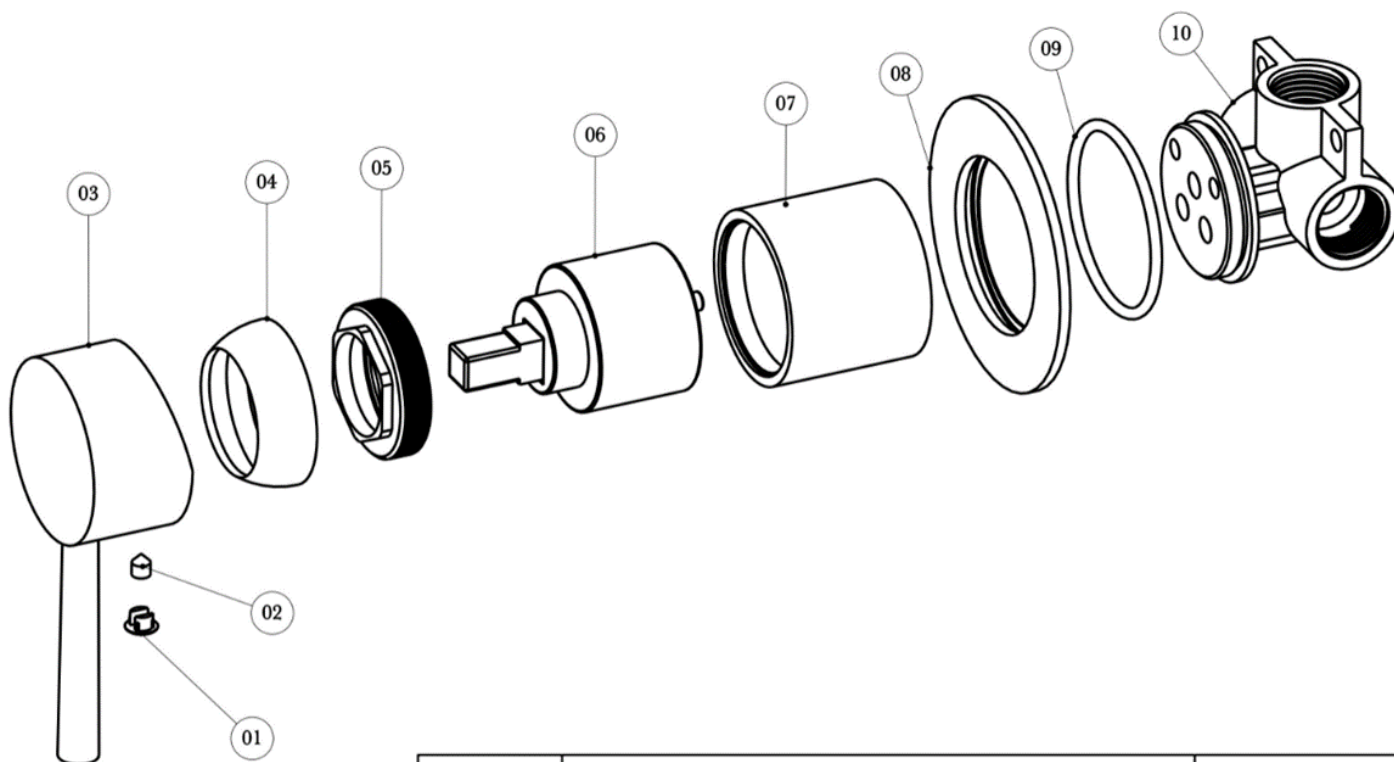
FOR FURTHER ADVICE PLEASE CONTACT :-

SAGITTARIUS LTD UNIT 1 LOWER VICTORIA STREET—CHADDERTON—OLDHAM—OL9 9TU TEL:0616 6202029

EMAIL:TECHNICAL@SAGITTARIUSTAPS.CO.UK

Flow Rates (Litres per minute)

System Pressure	0.1 Bar	0.2 Bar	0.3 Bar	0.5 Bar	1.0 Bar	1.5 Bar	2.0 Bar	3.0 Bar	4.0 Bar	5.0 Bar
	5.0	6.4	7.4	9.4	13.2	16.1	18.5	23.0	26.4	29.5



No.	ITEM	QTY
1	PLASTIC COVER CAP	1
2	M5X6 GRUBSCREW	1
3	ZINC-ALLOY HANDLE	1
4	HANDLE COLLAR	1
5	BRASS LOCK NUT	1
6	40MM CARTRIDGE	1
7	CARTRIDGE COVER	1
8	BRASS BASE PLATE	1
9	54*3 O-RING	1
10	VALVE BODY	1

FOR FURTHER ADVICE PLEASE CONTACT :-

SAGITTARIUS LTD UNIT 1 LOWER VICTORIA STREET—CHADDERTON—OLDHAM—OL9 9TU TEL:0616 6202029

EMAIL:TECHNICAL@SAGITTARIUSTAPS.CO.UK