

# SAGITTARIUS

## TAPS & SHOWERING

### OPERATING SPECIFICATIONS

#### Operating Pressure Criteria

Maximum pressure: **5 bar**

Minimum pressure: **0,5 bar**

Recommended working pressure 3 bar

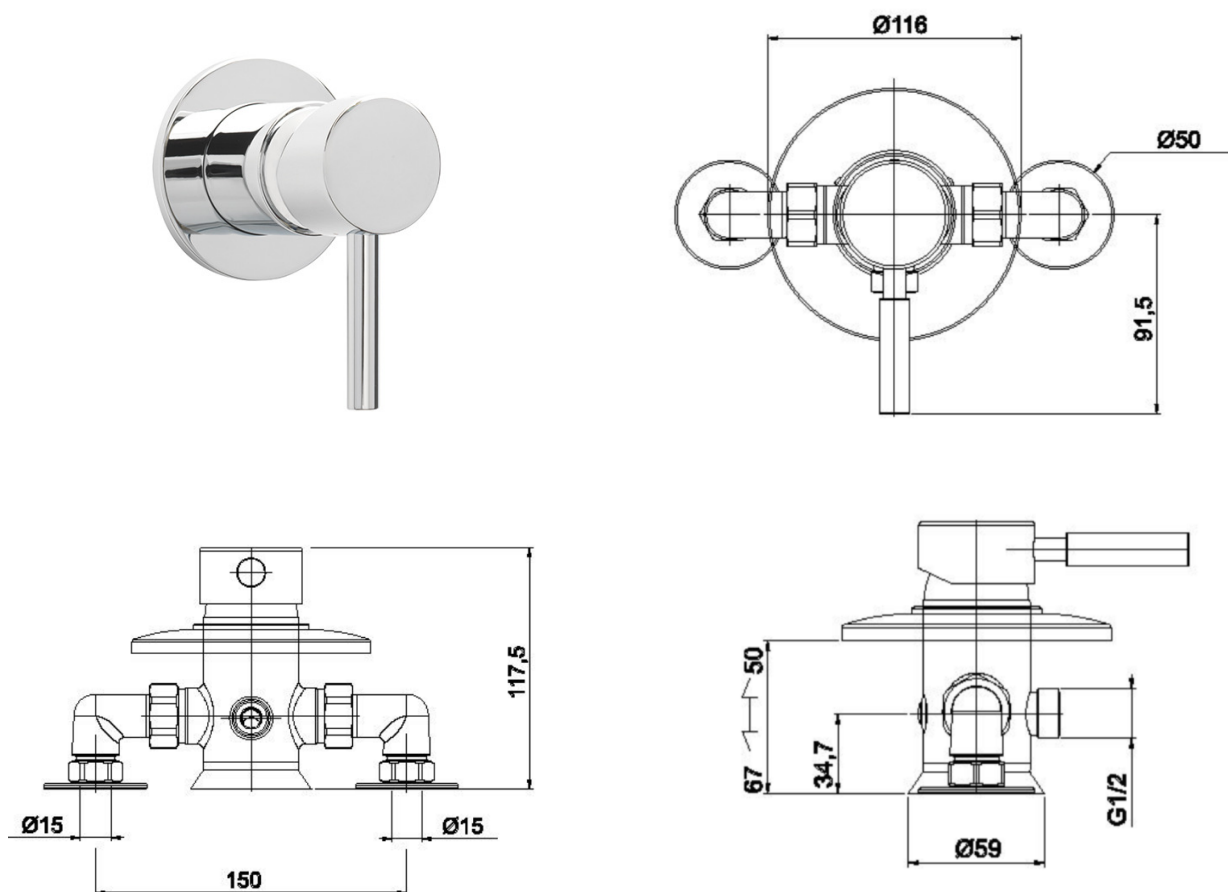
Operating pressures (on hot and cold line) should be kept as balanced as possible, and from a common source, in order to ensure the maximum efficiency of the mixer.

When pressures exceed 5 bar, installation of a pressure reducing valve (not supplied) is required.

ERGO LEVER MANUAL

SHOWER VALVE CHROME

EL/170/C



The information contained on this page was correct at the date of issue. Fitting dimensions are provided as a guide only. Some variation may occur due to manufacturing tolerances. We pursue a policy of continuing improvement in design and performance of our products and so reserve the right to change specifications without prior notice

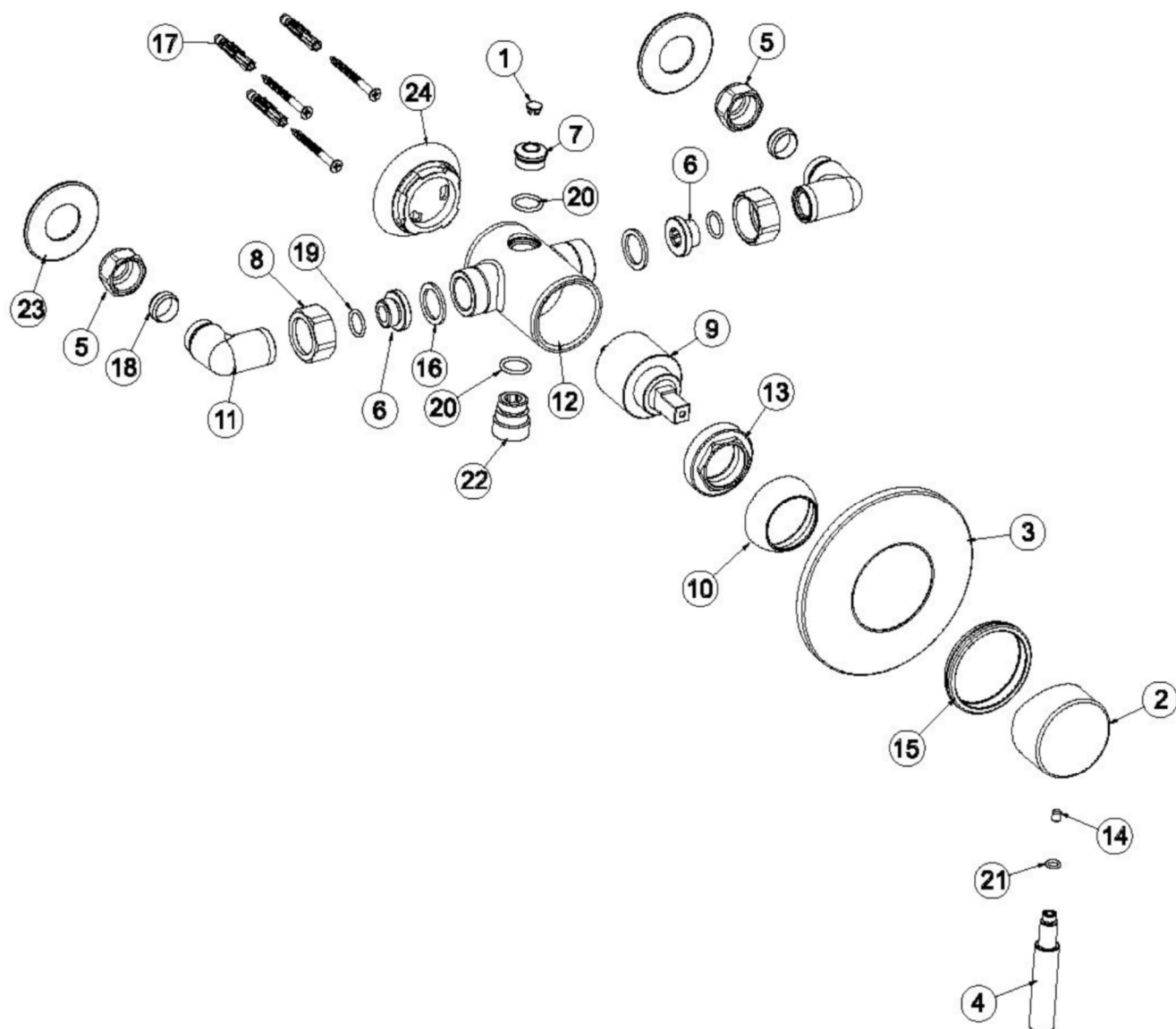
FOR FURTHER ADVICE PLEASE CONTACT :-

SAGITTARIUS LTD UNIT 1 LOWER VICTORIA STREET—CHADDERTON—OLDHAM—OL9 9TU TEL:0616 6202029

EMAIL:TECHNICAL@SAGITTARIUSTAPS.CO.UK

## Exploded parts drawing model 170

### Sagittarius Ergo Manual Valve



The information contained on this page was correct at the date of issue. Fitting dimensions are provided as a guide only. Some variation may occur due to manufacturing tolerances.  
We pursue a policy of continuing improvement in design and performance of our products and so reserve the right to change specifications without prior notice

FOR FURTHER ADVICE PLEASE CONTACT :-  
SAGITTARIUS LTD UNIT 1 LOWER VICTORIA STREET—CHADDERTON—OLDHAM—OL9 9TU TEL:0616 6202029  
EMAIL:TECHNICAL@SAGITTARIUSTAPS.CO.UK

## PLUMBING & INSTALLATION

The product must be fitted in accordance with Water Bylaw Regulations and check valves must be fitted (not supplied) in the pipes before the valve.

**IMPORTANT:** rinse pipe work carefully for a long while prior to fitting the mixer. Do not allow dirt, metal particles and shavings to block inlets; once this is done turn off water supply.

The valve is received with the outlet at the bottom for hose connection. If you require an outlet at the top, please follow the procedure stated at the paragraph "OUTLET CHANGE".

### CONCEALED VERSION

1. Prepare pipework at 150mm centres with cold supply to the right. The hole in wall should be prepared in order that it does not exceed the diameter of the plate which is 116mm. The depth from the rear of mounting plate to the back of the concealing plate can be between 50-60mm. The supply pipes should allow for inserting into the elbows not less than of 10mm (when nut is not fitted).
2. Fit the elbows (composed of part no. 5, 18, 11, 8, 19 and 6) loosely to the valve, ensuring to fit sealing washers (16).
3. Then place wall mounting plate (24) centrally both horizontally and vertically between pipe ends and mark drill holes. Once marked, drill holes and insert wall plugs (17).
4. Place mounting plate (24) up to wall and insert screws (17) and tighten, but not fully.
5. To secure the valve to the mounting plate, you are required to push this onto the plate and twist so that the lugs in the body and the plate engage. This may require some manoeuvring of the valve or plate, so that the valve is vertical; once this is achieved tighten plate screws and fit valve.
6. Place the concealing plate (3) with seal (15) over the valve body. Sealant may be used to seal behind the plate, ensuring that the lever can operate fully without contacting the plate. Then the elbows (11) with the nut (5) and olive (18) fitted can then be secured to the pipe ends. Tighten nuts to the pipes, along with the nuts to the body.
7. Once all of this has been done, the lever handle can be fitted. To do this place the handle body (2) onto the valve, so that it will move equal distances in both directions; once this done, fit grub screw (14) and tighten using an Allen key. Then place the washer (21) on the lever (4) and screw it to the handle body (2).
8. Turn on water supply and check for leaks.

The information contained on this page was correct at the date of issue. Fitting dimensions are provided as a guide only. Some variation may occur due to manufacturing tolerances.  
We pursue a policy of continuing improvement in design and performance of our products and so reserve the right to change specifications without prior notice

FOR FURTHER ADVICE PLEASE CONTACT :-

SAGITTARIUS LTD UNIT 1 LOWER VICTORIA STREET—CHADDERTON—OLDHAM—OL9 9TU TEL:0616 6202029

EMAIL:TECHNICAL@SAGITTARIUSTAPS.CO.UK

## **EXPOSED VERSION**

1. Prepare pipework at 150mm centres with cold supply to the right. The supply pipes should allow for inserting into the elbows not less than of 10mm (when nut is not fitted).
2. Fit the elbows (composed of part no. 5, 18, 11, 8, 19 and 6) loosely to the valve, ensuring to fit sealing washers (16).
3. Then place wall mounting plate (24) centrally both horizontally and vertically between pipe ends and mark drill holes. Once marked, drill holes and insert wall plugs (17).
4. Place mounting plate (24) up to wall and insert screws (17) and tighten, but not fully.
5. To secure the valve to the mounting plate, you are required to push this onto the plate and twist so that the lugs in the body and the plate engage. This may require some manoeuvring of the valve or plate, so that the valve is vertical; once this is achieved tighten plate screws and fit valve.
6. Place the wall trim plates (23) over the pipe ends, sealant may be used to seal behind the trim plates, then the elbows (11) with the nut (5) and olive (18) fitted can then be secured to the pipe ends, tighten nuts to the pipes, along with the nuts to the body.
7. Once all of this has been done, the handle body (2) can be fitted. To do this place the handle body (2) onto the valve, so that it will move equal distances in both directions; once this done, fit grub screw (14) and tighten using an Allen key. Place the washer (21) on the lever (4) and screw it to the handle body (2).
8. Turn on water supply and check for leaks.

## **MAINTENANCE**

Through years of use impurities and limescale can restrict the flow of water through the mixer. If the mixer's performance deteriorates the cartridge may need to be replaced.

In order to do this, please follow the following procedure:

1. Shut down water supply to the mixer.
2. Unscrew the lever (4). Undo grub screw (14) and pull the handle body (2) from the mixer body.
3. Unscrew the cartridge cover (10) and the locking nut (13).
4. Carefully remove the cartridge (9) from mixer.
5. Fit the new cartridge, tighten the locking nut (13) and then screw the cartridge cover (10).
6. Re-fit the handle body (2), fix it by means of the grub screw (14) and then screw the lever (4), paying attention to place the washer (21).

## **AFTERCARE INSTRUCTIONS**

Whilst modern plating techniques are used in the manufacture of this item, the surfaces will wear if not cleaned correctly. Clean this product with a soft cloth and clean water. The use of any abrasive material will invalidate the guarantee.

The information contained on this page was correct at the date of issue. Fitting dimensions are provided as a guide only. Some variation may occur due to manufacturing tolerances.  
We pursue a policy of continuing improvement in design and performance of our products and so reserve the right to change specifications without prior notice

FOR FURTHER ADVICE PLEASE CONTACT :-

SAGITTARIUS LTD UNIT 1 LOWER VICTORIA STREET—CHADDERTON—OLDHAM—OL9 9TU TEL:0616 6202029

EMAIL:TECHNICAL@SAGITTARIUSTAPS.CO.UK

## TROUBLESHOOTING

| DEFECT                           | CAUSE  | SOLUTION   |
|----------------------------------|--|--|
| The mixer does not deliver water | Main water supply is shut off                      | Open the main water supply                                   |
|                                  | Lack of pressure in the system                     | Make sure to have enough pressure to feed the mixer          |
|                                  | Faulty cartridge                                   | Replace the cartridge  |
| Poor flow                        | Water supplies are not completely open             | Open the water supplies completely                           |
|                                  | Dirty or damaged filters                           | Clean or replace filters                                     |
|                                  | Dirty or damaged shower accessories                | Clean or replace the shower accessories                      |
| Mixer drips                      | Broken cartridge                                   | Replace the cartridge  |
|                                  | Pressure is too high                               | Reduce the pressure in the main system                       |
| Lever stiff to turn              | Lack of grease on the discs of the cartridge       | Replace the cartridge  |
|                                  | Pressures exceed 5 bar                             | Fit a pressure reducer before the mixer (in the main system) |
|                                  | Too calcareous water                               | Replace the cartridge  |
| Temperature oscillations         | Unbalanced pressures                               | Change supply system   |
|                                  | The hot water supplied by the boiler is not enough | Adjust the system  |

## OUTLET CHANGE

Changing bottom outlet to a top outlet.

The valve is received with the outlet at the bottom for hose connection. If you require an outlet at the top, you will need to change the outlet position.

To do this follow the steps below.

1. Unscrew bottom outlet (22) from valve (12), using a spanner.
2. Unscrew the top outlet plug (7) from the valve using a spanner.
3. Fit plug (7) into the hole at the bottom of the valve and tighten.
4. Insert the outlet (22) into the top of the valve and tighten.
5. Fit riser pipe and check for leaks.

**IMPORTANT: do not simply turn the valve over to change the outlet position!**



The information contained on this page was correct at the date of issue. Fitting dimensions are provided as a guide only. Some variation may occur due to manufacturing tolerances.  
We pursue a policy of continuing improvement in design and performance of our products and so reserve the right to change specifications without prior notice

FOR FURTHER ADVICE PLEASE CONTACT :-  
SAGITTARIUS LTD UNIT 1 LOWER VICTORIA STREET—CHADDERTON—OLDHAM—OL9 9TU TEL:0616 6202029  
EMAIL:TECHNICAL@SAGITTARIUSTAPS.CO.UK