

SAGITTARIUS

TAPS & SHOWERING

Construction Brass Body & Base plates, Zinc-alloy Handles

Finishes Chrome (Ni : 8-12um, Cr : 0.25-0.3um)

Product Type Contemporary

ERGO DECK MOUNTED SIDE VALVES

EL/140

Water Pressure Tested Between Min. 0.2 bar, Max. 6.0 bar

Standards Complies with BS5412, BS EN200

Cartridge ¼ turn ¾" Ceramic disc valve

Net Weight (Valves only) 775g

Fitting Brass G¾" BSP tails

Guarantee 10 years against manufacturing faults (excluding serviceable parts)



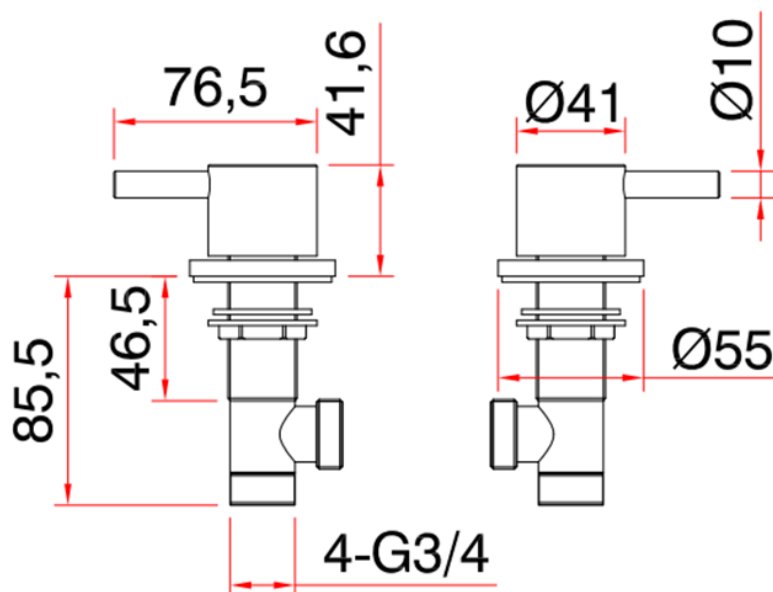
Operating Water Pressure



COMBI BOILER
1.2 - 1.5+ bar



HIGH PRESSURE
1.2 - 1.5+ bar



The information contained on this page was correct at the date of issue. Fitting dimensions are provided as a guide only. Some variation may occur due to manufacturing tolerances. We pursue a policy of continuing improvement in design and performance of our products and so reserve the right to change specifications without prior notice

FOR FURTHER ADVICE PLEASE CONTACT :-

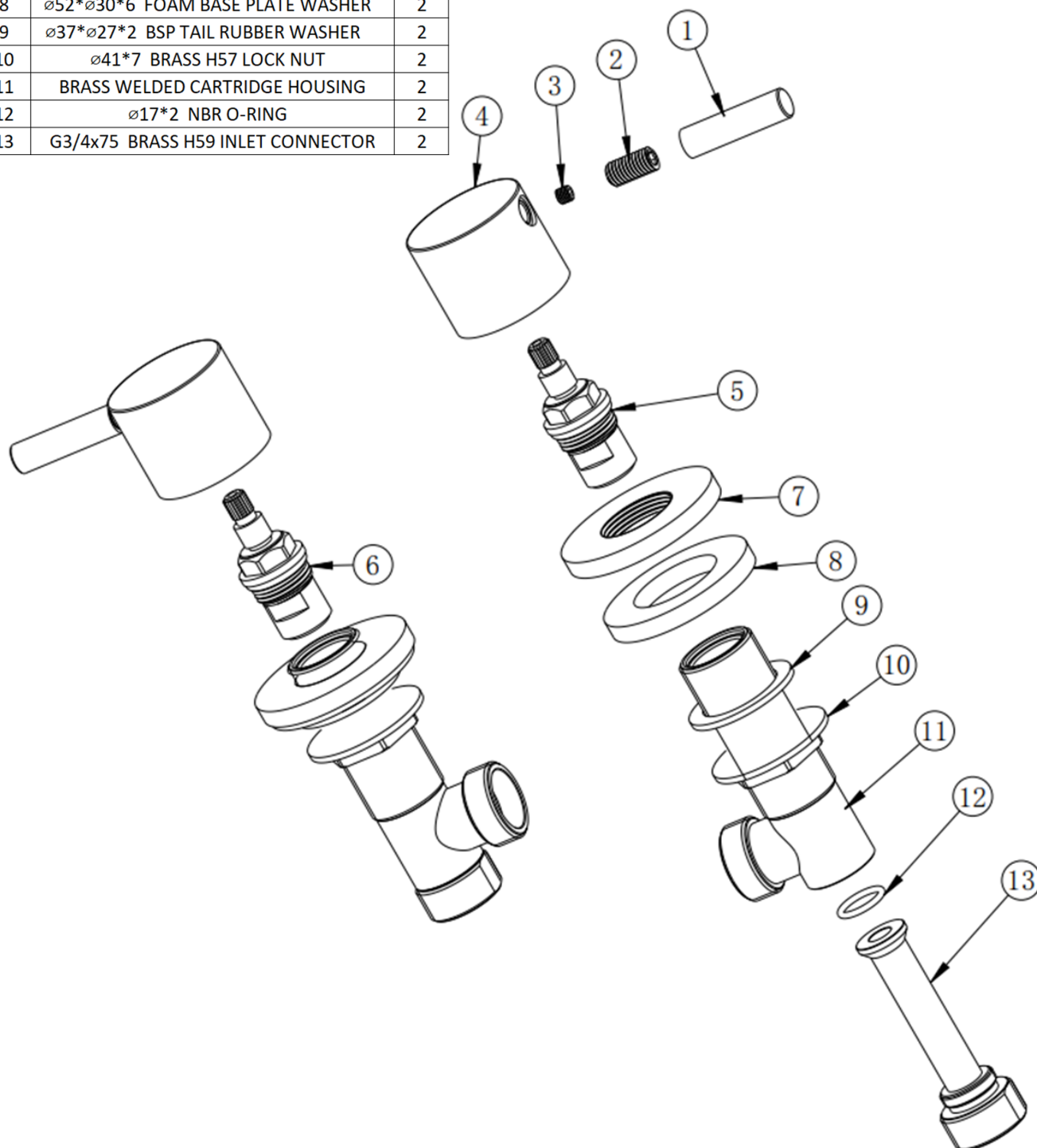
SAGITTARIUS LTD UNIT 1 LOWER VICTORIA STREET—CHADDERTON—OLDHAM—OL9 9TU TEL:0616 6202029

EMAIL:TECHNICAL@SAGITTARIUSTAPS.CO.UK

Flow Rates (Litres per minute)

System Pressure	0.1 Bar	0.2 Bar	0.3 Bar	0.5 Bar	1.0 Bar	1.5 Bar	2.0 Bar	3.0 Bar	4.0 Bar	5.0 Bar
	11.9	15.4	18.4	23.2	32.2	39.4	45.6	55.6	64.0	71.9

NO.	DESCRIPTION	QTY
1	∅10*37 BRASS HANDLE LEVER	2
2	M8x16 S/STEEL SCREW	2
3	M5x5 S/STEEL POINTED GRUB SCREW	2
4	∅41*34 ZINC-ALLOY HANDLE BODY	2
5	M20*1.5 COLD CERAMIC DISC CARTRIDGE	1
6	M20*1.5 HOT CERAMIC DISC CARTRIDGE	1
7	∅55*6 BRASS HPB59-1 BASE PLATE	2
8	∅52*∅30*6 FOAM BASE PLATE WASHER	2
9	∅37*∅27*2 BSP TAIL RUBBER WASHER	2
10	∅41*7 BRASS H57 LOCK NUT	2
11	BRASS WELDED CARTRIDGE HOUSING	2
12	∅17*2 NBR O-RING	2
13	G3/4x75 BRASS H59 INLET CONNECTOR	2



FOR FURTHER ADVICE PLEASE CONTACT :-

SAGITTARIUS LTD UNIT 1 LOWER VICTORIA STREET—CHADDERTON—OLDHAM—OL9 9TU TEL:0616 6202029

EMAIL:TECHNICAL@SAGITTARIUSTAPS.CO.UK