

SAGITTARIUS

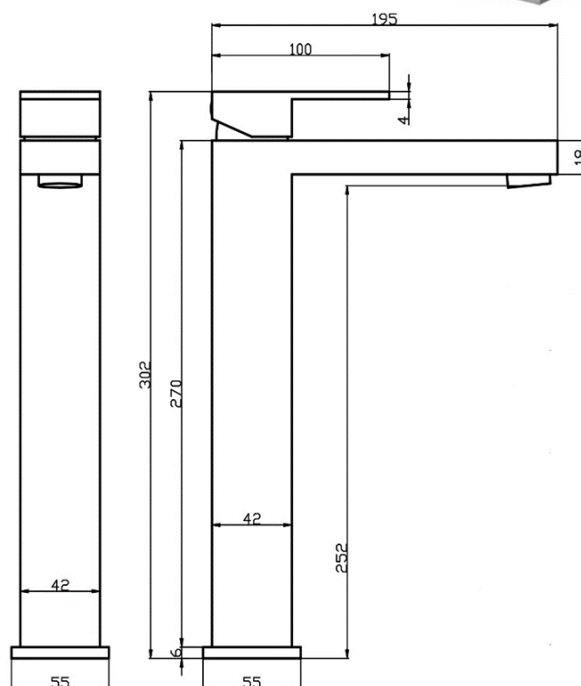
TAPS & SHOWERING

BLADE TALL MONO BASIN MIXER BL/109

Construction	Brass Body, Zinc-alloy Handle
Finishes	Chrome (Ni : 8-12um, Cr : 0.25-0.3um)
Product Type	Contemporary
Water Pressure Tested Between	Min. 0.2 bar, Max. 6.0 bar
Standards	Complies with BS6920, BS EN200
Cartridge	WRAS Approved 35mm Triduo [®] Ceramic disc cartridge
Aerator	Neoperl spout aerator
Fitting	UK: M10 x 350mm G½" BSP Female Flexi Tails EU: M10 x 350mm G3/8" BSP Female Flexi Tails
Guarantee	10 years against manufacturing faults (excluding serviceable parts)
Additional Information	Incorporates water saving feature : Triduo [®] volume limiter (optional)



Operating Water Pressure



The information contained on this page was correct at the date of issue. Fitting dimensions are provided as a guide only. Some variation may occur due to manufacturing tolerances. We pursue a policy of continuing improvement in design and performance of our products and so reserve the right to change specifications without prior notice

FOR FURTHER ADVICE PLEASE CONTACT :-

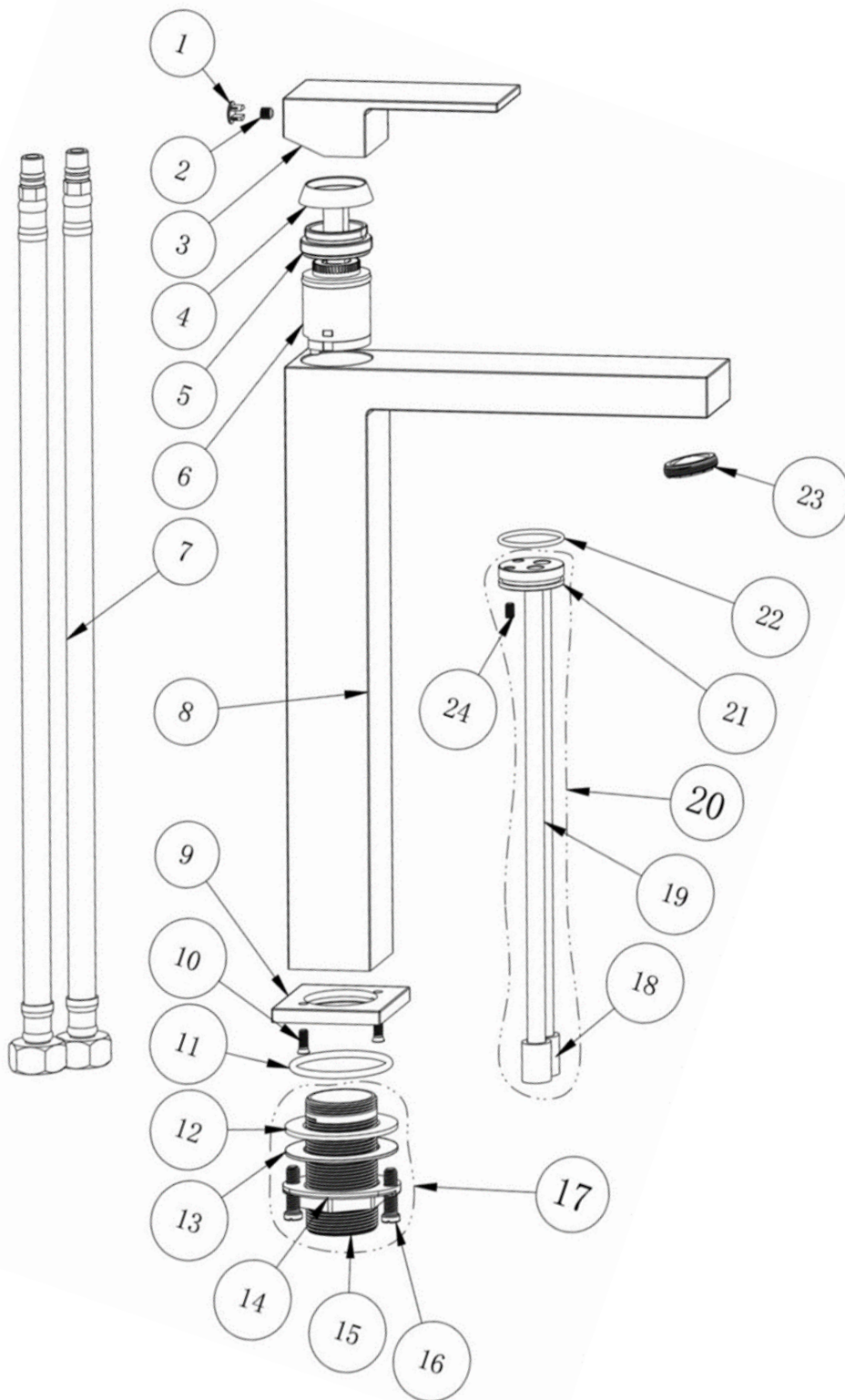
SAGITTARIUS LTD UNIT 1 LOWER VICTORIA STREET—CHADDERTON—OLDHAM—OL9 9TU TEL:0616 6202029

EMAIL:TECHNICAL@SAGITTARIUSTAPS.CO.UK

Flow Rates (Litres per minute)

System Pressure	0.1 Bar	0.2 Bar	0.3 Bar	0.5 Bar	1.0 Bar	1.5 Bar	2.0 Bar	3.0 Bar	4.0 Bar	5.0 Bar
	2.8	4.1	5.1	7.1	10.1	12.6	14.8	17.9	-	-

24	Screw	1
23	Aerator	1
22	O-ring	1
21	Cartridge base	1
20	Base with tubes	1
19	Brass tubes	2
18	Flexi connector	2
17	The tube group	1
16	Screw	2
15	Tube	1
14	Screw	1
13	Stainless steel washer	1
12	Black washer	1
11	O-ring	1
10	Screw	2
9	Base plate	1
8	Body	1
7	Flexi tails	2
6	30mm Cartridge	1
5	Nut	1
4	Chrome collar	1
3	Handle	1
2	Screw	1
1	Cap	1
Index	Description	Qty.



FOR FURTHER ADVICE PLEASE CONTACT :-

SAGITTARIUS LTD UNIT 1 LOWER VICTORIA STREET—CHADDERTON—OLDHAM—OL9 9TU TEL:0616 6202029