

SAGITTARIUS

TAPS & SHOWERING

BLADE BATH FILLER

BL/104

Construction	Brass Body, Zinc-alloy Handles
Finishes	Chrome plated to BS EN 248
Product Type	Contemporary
Water Pressure Tested Between	Min. 0.2 bar, Max. 6.0 bar
Standards	Complies with BS5412, BS EN200
Certification	WRAS (1709044) approved and certified
Cartridge	1/4 Turn 3/4" Ceramic disc valves
Fitting	Brass G3/4" BSP tails
Aerator	Spout aerator
Guarantee	10 years against manufacturing faults (excluding serviceable parts)



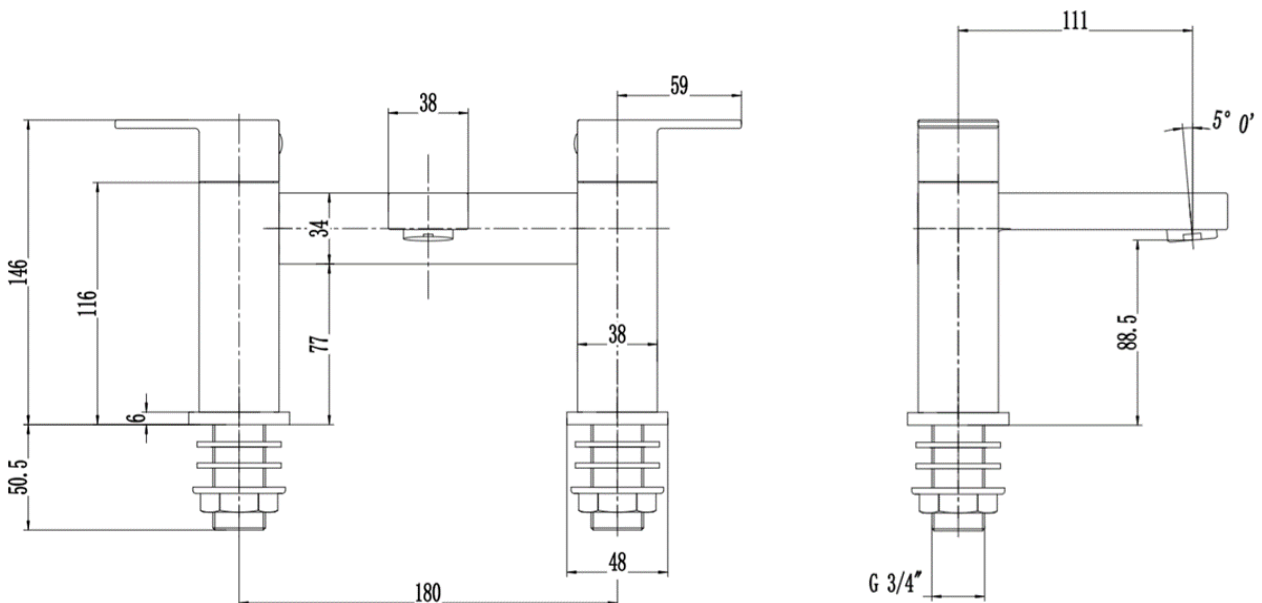
LOW PRESSURE
0.2-0.5 bar



COMBI BOILER



HIGH PRESSURE
1.2- 1.5+ bar



The information contained on this page was correct at the date of issue. Fitting dimensions are provided as a guide only. Some variation may occur due to manufacturing tolerances. We pursue a policy of continuing improvement in design and performance of

FOR FURTHER ADVICE PLEASE CONTACT :-

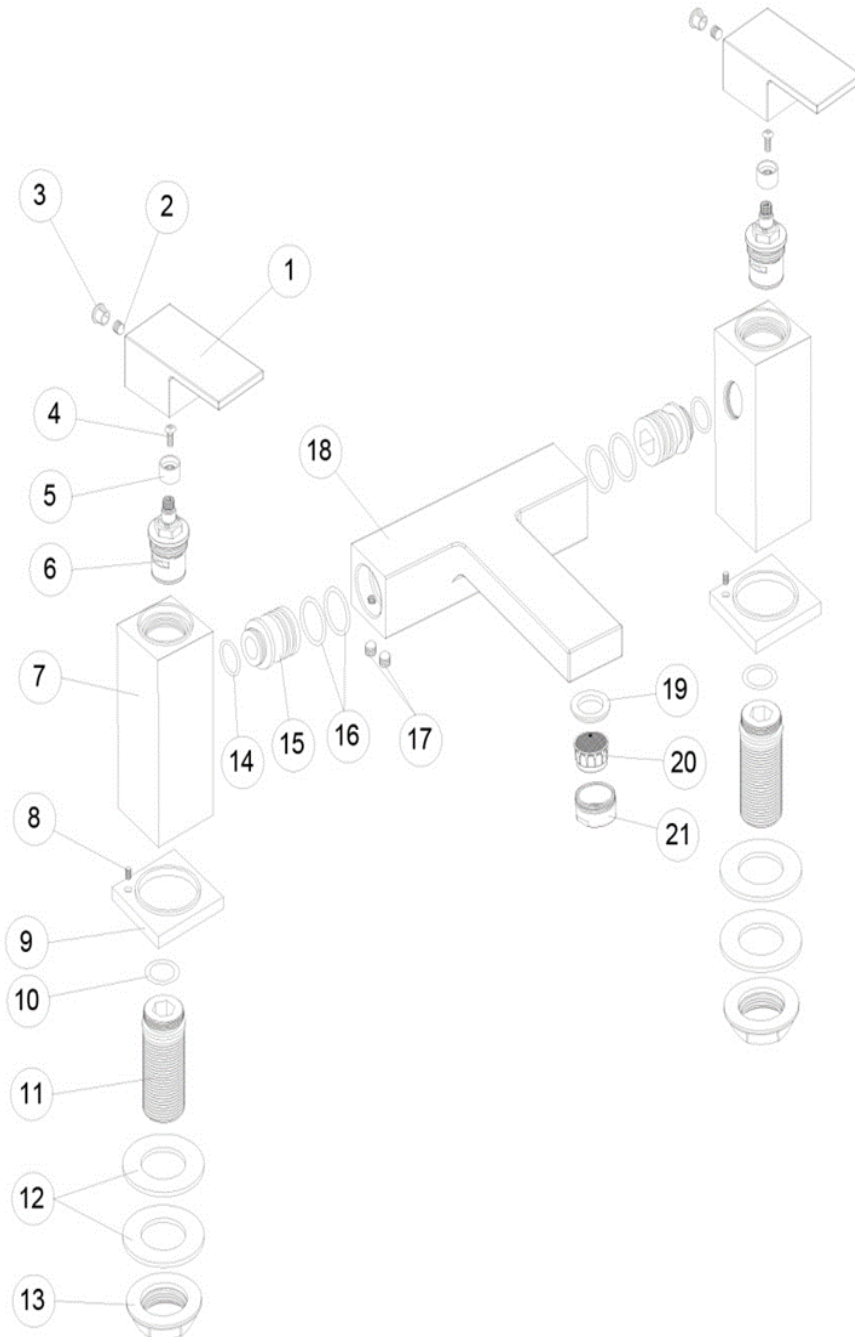
SAGITTARIUS LTD UNIT 1 LOWER VICTORIA STREET—CHADDERTON—OLDHAM—OL9 9TU TEL:0616 6202029

EMAIL:TECHNICAL@SAGITTARIUSTAPS.CO.UK

Flow Rates (Litres per minute)

System Pressure	0.1 Bar	0.2 Bar	0.3 Bar	0.5 Bar	1.0 Bar	1.5 Bar	2.0 Bar	3.0 Bar	4.0 Bar	5.0 Bar
	5.0	7.9	-	13.2	20.0	22.6	24.1	28.0	-	-

Bath Filler



NO.	DESCRIPTION	QTY
1	HANDLES	2
2	SCREW	2
3	HANDLE COVER	2
4	SCREW	2
5	PVC Cover	2
6	G3/4" QUARTER-TURN CARTRIDGE	2
7	SIDE BODY	2
8	SCREW	2
9	BASE PLATE	2
10	"O" RING	2
11	G3/4" BSP Tails	2
12	WASHER	4
13	G3/4" BACK NUT	2
14	"O" RING	2
15	CONNECTOR	2
16	"O" RING	4
17	SCREW	4
18	MIDDLE BODY	1
19	WASHER	1
20	NEOPERL AERATOR	1
21	M24*1 NOZZLE	1