

SAGITTARIUS

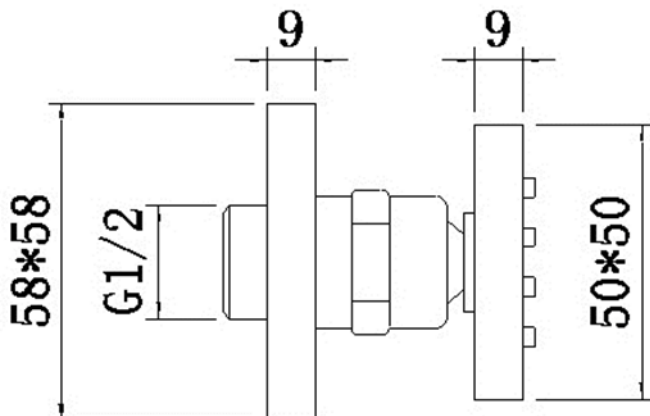
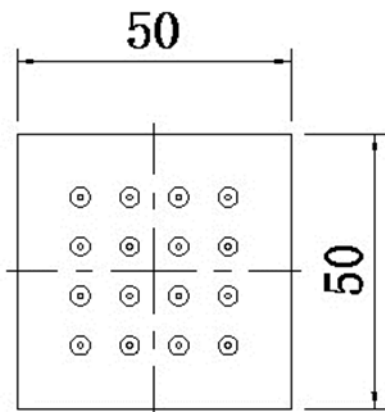
TAPS & SHOWERING

Construction	Brass
Finishes	Chrome
Product Type	Contemporary
Water Pressure Tested Between	Min 0.5 bar and Max 5.0 bar
Fitting	G1/2" BSP
Guarantee	1 year against manufacturing faults (excluding serviceable parts)
Additional Information	Size : 50 x 50mm

CUBE 50MM BODY JET

CHROME

BJ/556/C



The information contained on this page was correct at the date of issue. Fitting dimensions are provided as a guide only. Some variation may occur due to manufacturing tolerances. We pursue a policy of continuing improvement in design and performance of our products and so reserve the right to change specifications without prior notice

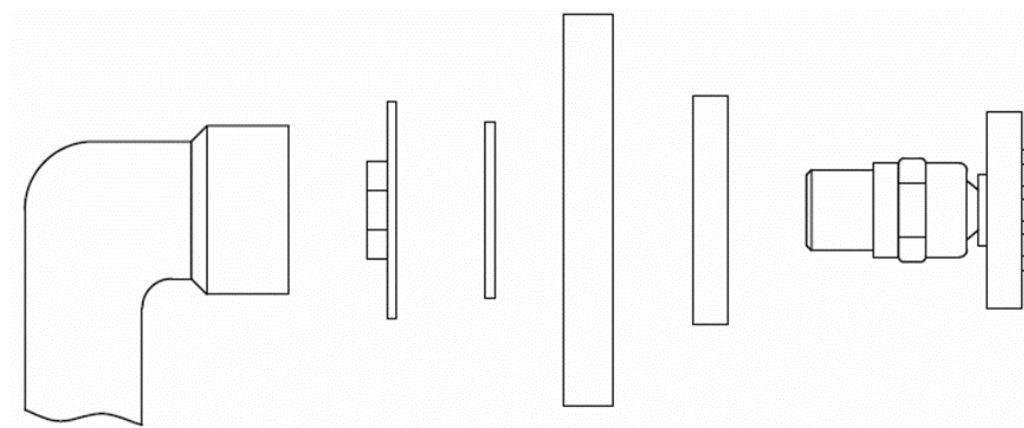
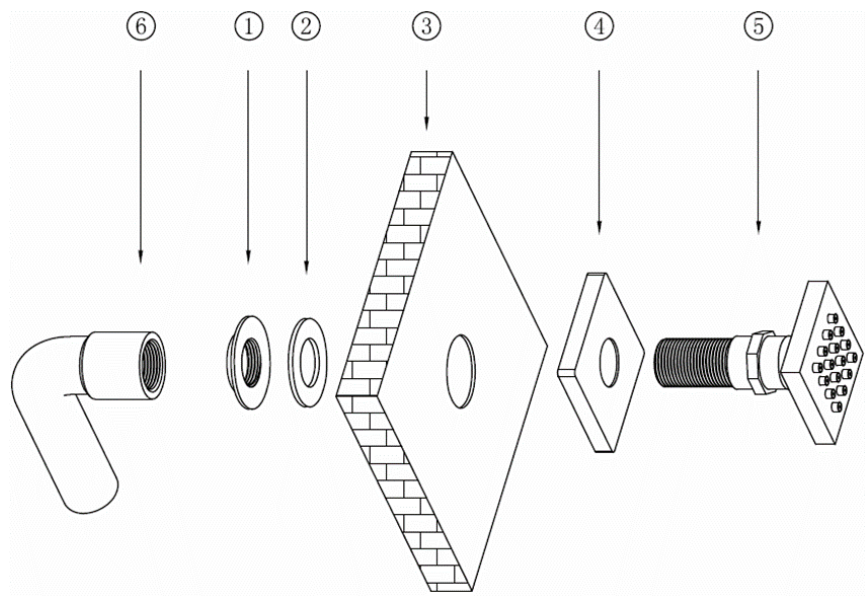
FOR FURTHER ADVICE PLEASE CONTACT :-

SAGITTARIUS LTD UNIT 1 LOWER VICTORIA STREET—CHADDERTON—OLDHAM—OL9 9TU TEL:0616 6202029

EMAIL:TECHNICAL@SAGITTARIUSTAPS.CO.UK

Flow Rates (Litres per minute)

System Pressure	0.1 Bar	0.2 Bar	0.3 Bar	0.5 Bar	1.0 Bar	1.5 Bar	2.0 Bar	3.0 Bar	4.0 Bar	5.0 Bar
	2.2	3.5	4.1	7.6	10.5	12.0	13.9	16.8	19.4	21.8



6	PIPE	1
5	SPREAD HEAD BODY	1
4	BASE PLATE	1
3	WALL	1
2	WASHER	1
1	NUT	1
No.	DESCRIPTION	QTY

FOR FURTHER ADVICE PLEASE CONTACT :-

SAGITTARIUS LTD UNIT 1 LOWER VICTORIA STREET—CHADDERTON—OLDHAM—OL9 9TU TEL:0616 6202029

EMAIL:TECHNICAL@SAGITTARIUSTAPS.CO.UK