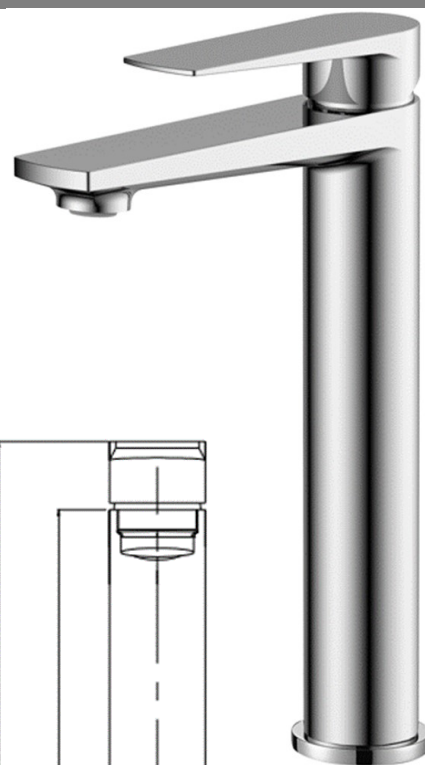


SAGITTARIUS

TAPS & SHOWERING

Construction	Brass Body, Zinc-alloy handle
Finishes	Chrome (Ni : 8-12um, Cr : 0.25-0.3um)
Product Type	Contemporary
Water Pressure	Min. 0.2 bar, Max. 6.0 bar
Tested Between	
Standards	Complies with BS6920, BS EN200
Cartridge	35mm Ceramic Disc Cartridge
Aerator	Neoperl spout aerator
Fitting	UK: M10 x 350mm G½" BSP Female Flexi Tails EU: M10 x 350mm G3/8" BSP Female Flexi Tails
Guarantee	10 years against manufacturing faults (excluding serviceable parts)

BARI TALL MONOBLOC BASIN MIXER BA/109



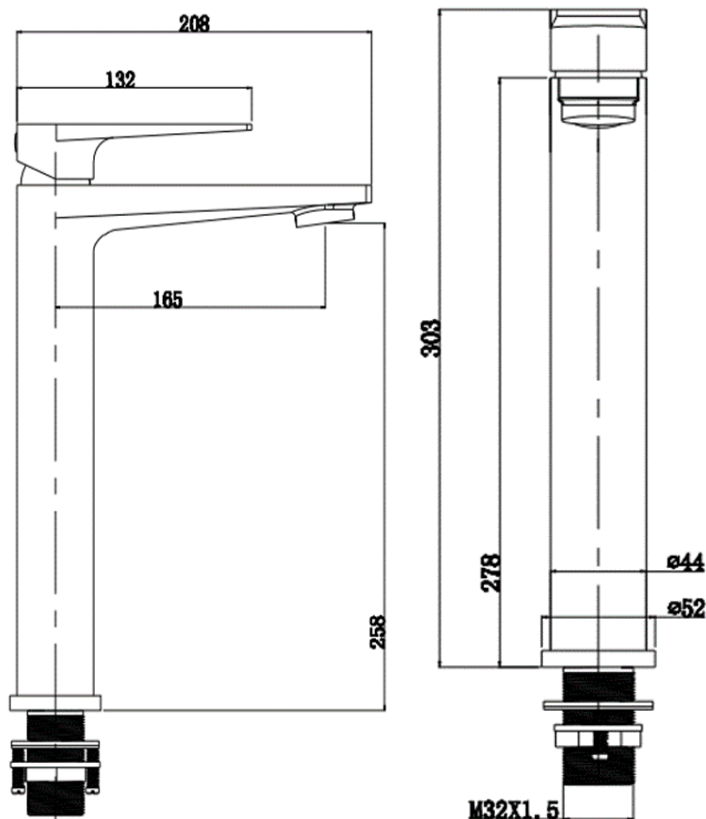
Operating Water Pressure



COMBI BOILER
1.2 - 1.5+ bar



HIGH PRESSURE
1.2 - 1.5+ bar



The information contained on this page was correct at the date of issue. Fitting dimensions are provided as a guide only. Some variation may occur due to manufacturing tolerances. We pursue a policy of continuing improvement in design and performance of our products and so reserve the right to change specifications without prior notice

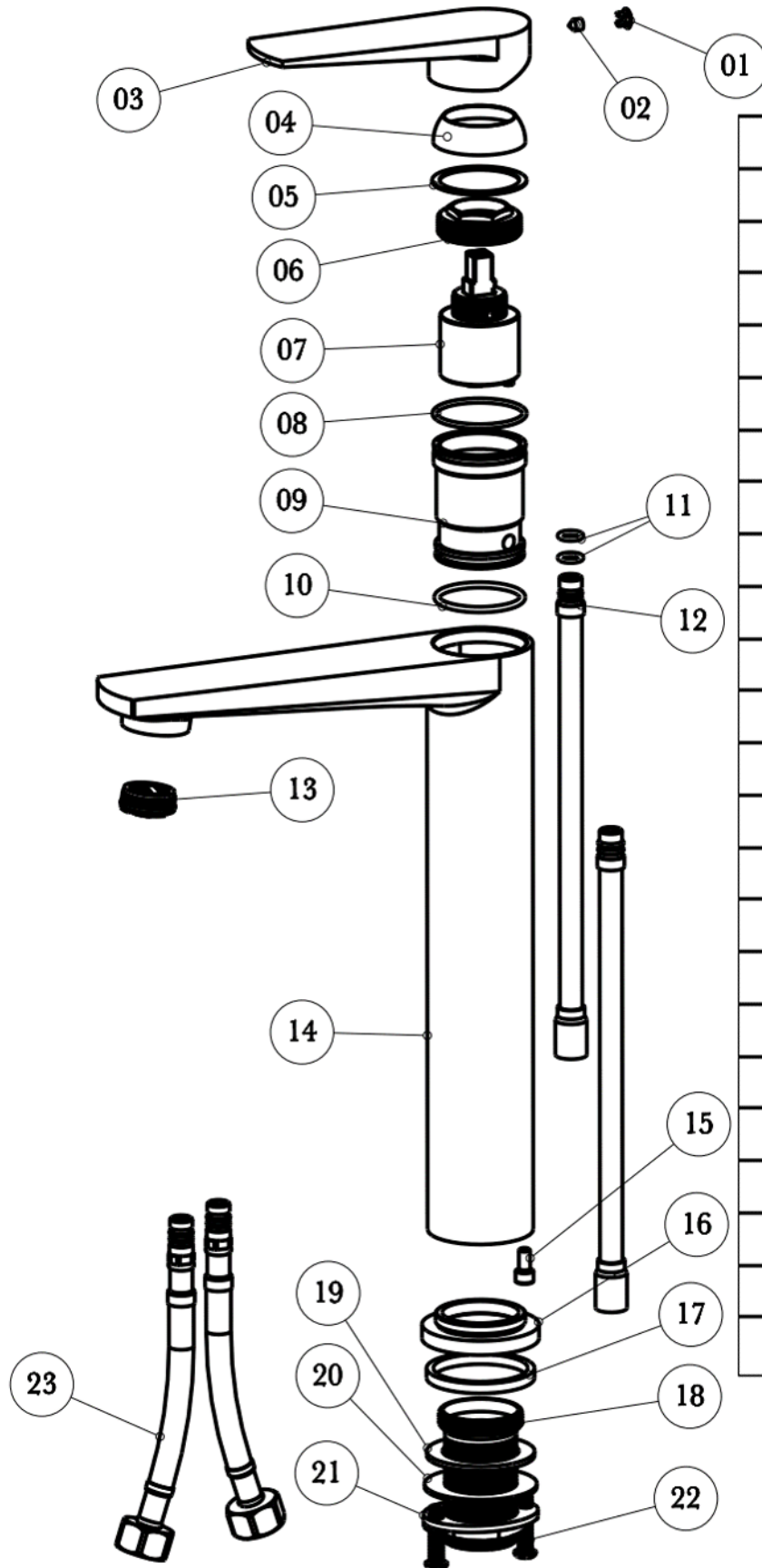
FOR FURTHER ADVICE PLEASE CONTACT :-

SAGITTARIUS LTD UNIT 1 LOWER VICTORIA STREET—CHADDERTON—OLDHAM—OL9 9TU TEL:0616 6202029

EMAIL:TECHNICAL@SAGITTARIUSTAPS.CO.UK

Flow Rates (Litres per minute)

System Pressure	0.1 Bar	0.2 Bar	0.3 Bar	0.5 Bar	1.0 Bar	1.5 Bar	2.0 Bar	3.0 Bar	4.0 Bar	5.0 Bar
	3.7	5.0	5.9	7.4	10.3	12.6	14.4	17.6	20.3	22.8



23	FLEXI TAILS	2
22	SCREW	2
21	LOCK NUT	1
20	WASHER	1
19	WASHER	1
18	THREADED FIXING BAR	1
17	WASHER	1
16	BASE PLATE	1
15	BASE PLATE SCREW	1
14	TAP BODY	1
13	SPOUT AERATOR	1
12	INLET COPPER PIPES	2
11	O-RING	4
10	CARTRIDGE O-RING	1
9	CARTRIDGE HOUSING	1
8	CARTRIDGE O-RING	1
7	35MM CARTRIDGE	1
6	CARTRIDGE LOCK NUT	1
5	WASHER	1
4	HANDLE COLLAR	1
3	HANDLE	1
2	HANDLE GRUB SCREW	1
1	COVER CAP	1
NO.	DESCRIPTION	QTY

FOR FURTHER ADVICE PLEASE CONTACT :-

SAGITTARIUS LTD UNIT 1 LOWER VICTORIA STREET—CHADDERTON—OLDHAM—OL9 9TU TEL:0616 6202029

EMAIL:TECHNICAL@SAGITTARIUSTAPS.CO.UK