

SAGITTARIUS

TAPS & SHOWERING

Construction	Brass Body, Zinc-alloy Handle
Finishes	Chrome (Ni : 8-12um, Cr : 0.25-0.3um)
Product Type	Contemporary
Water Pressure Tested Between	Min. 0.2 bar, Max. 5.0 bar
Standards	Complies with BS5412, BS EN200
Certification	WRAS (1805053) approved and certified
Cartridge	1/4 Turn 1/2" Ceramic Disc Valves
Spout	Neoperl spout aerator
Fitting	Brass G3/4" BSP Tails
Guarantee	10 years against manufacturing faults

BARI BATH SHOWER MIXER BA/105

Additional Information Supplied with Chrome 1.5m PVC hose,



Operating Water Pressure



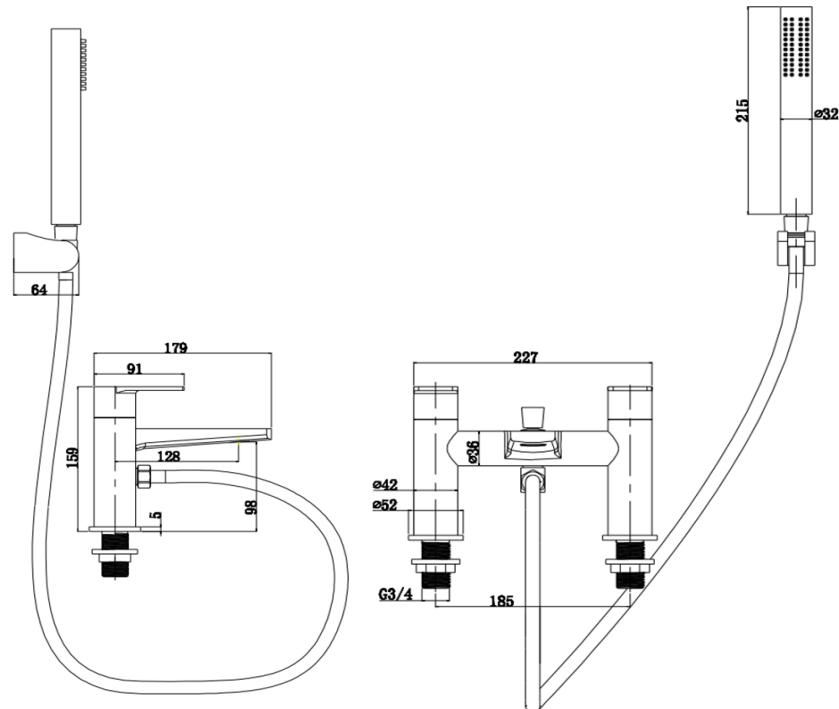
LOW PRESSURE
0.2-0.5 bar



COMBI BOILER



HIGH PRESSURE
1.2-1.5+ bar

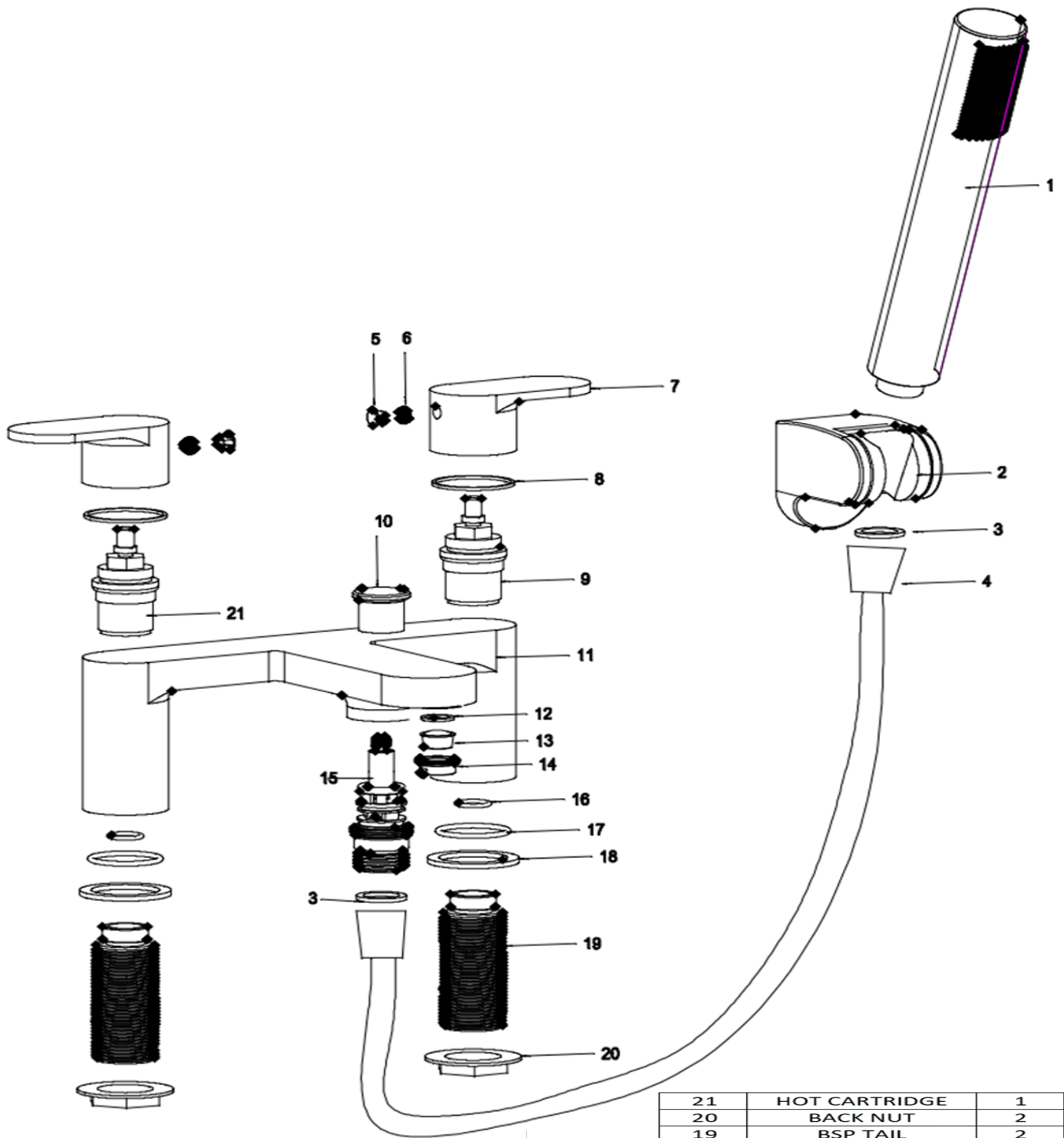


The information contained on this page was correct at the date of issue. Fitting dimensions are provided as a guide only. Some variation may occur due to manufacturing tolerances. We pursue a policy of continuing improvement in design and performance of our products and so reserve the right to change specifications without prior notice

FOR FURTHER ADVICE PLEASE CONTACT :-

SAGITTARIUS LTD UNIT 1 LOWER VICTORIA STREET—CHADDERTON—OLDHAM—OL9 9TU TEL:0616 6202029

EMAIL:TECHNICAL@SAGITTARIUSTAPS.CO.UK



21	HOT CARTRIDGE	1
20	BACK NUT	2
19	BSP TAIL	2
18	RUBBER GASKET	2
17	O-RING	2
16	O-RING	2
15	DIVERTER	1
14	AERATOR COVER	1
13	AERATOR	1
12	RUBBER GASKET	1
11	TAP BODY	1
10	DIVERTER CAP	1
9	COLD CARTRIDGE	1
8	WASHER	2
7	HANDLE	2
6	SCREW	2
5	COVER CAP	2
4	SHOWER HOSE	1
3	RUBBER GASKET	2
2	HANDSET HOLDER	1
1	HANDSET	1
No.	DESCRIPTION	QTY

FOR FURTHER ADVICE PLEASE CONTACT :-

SAGITTARIUS LTD UNIT 1 LOWER VICTORIA STREET—CHADDERTON—OLDHAM—OL9 9TU TEL:0616 6202029

EMAIL:TECHNICAL@SAGITTARIUSTAPS.CO.UK