

SAGITTARIUS

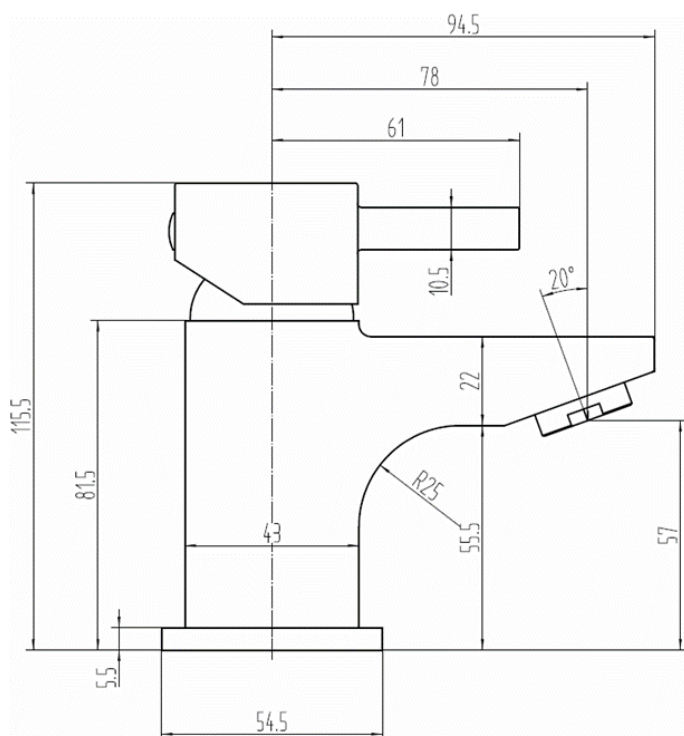
TAPS & SHOWERING

Construction	Brass Body (HPb59-1), equivalent to BS CZ122 / EN CW617N / CuZn40Pb2; Zinc-alloy Handle & Base plate
Finishes	Chrome plated to BS EN 248
Product Type	Contemporary
Water Pressure Tested Between	Min. 0.1 bar, Max. 6.0 bar
Standards	Complies with BS6920, BS EN200
Cartridge	35mm Ceramic disc cartridge
Aerator	Spout aerator
Net Weight (Tap only)	666g
Fitting	UK: M10 x 400mm G $\frac{1}{2}$ " BSP Female Flexi Tails (4.5mm bore) EU: M10 x 350mm G $\frac{3}{8}$ " BSP Female Flexi Tails
Guarantee	10 years against manufacturing faults (excluding serviceable parts)
Additional Information	Supplied with G $\frac{1}{4}$ " sprung waste (UK only)

AXIS CLOAKROOM

MONOBLOC BASIN MIXER

AX/186/C



The information contained on this page was correct at the date of issue. Fitting dimensions are provided as a guide only. Some variation may occur due to manufacturing tolerances. We pursue a policy of continuing improvement in design and performance of our products and so reserve the right to change specifications without prior notice

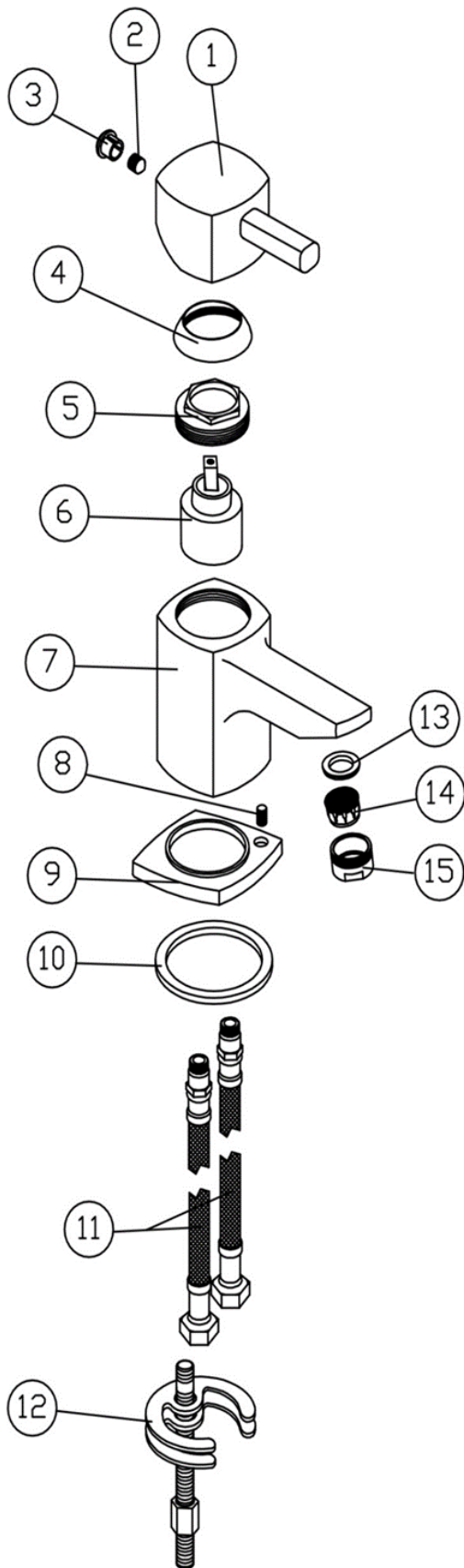
FOR FURTHER ADVICE PLEASE CONTACT :-

SAGITTARIUS LTD UNIT 1 LOWER VICTORIA STREET—CHADDERTON—OLDHAM—OL9 9TU TEL:0616 6202029

EMAIL:TECHNICAL@SAGITTARIUSTAPS.CO.UK

Flow Rates (Litres per minute)

System Pressure	0.1 Bar	0.2 Bar	0.3 Bar	0.5 Bar	1.0 Bar	1.5 Bar	2.0 Bar	3.0 Bar	4.0 Bar	5.0 Bar
	3.6	6.1	-	7.6	10.8	-	13.4	15.6	-	-



NO.	DESCRIPTION	QTY
1	HANDLE	1
2	M5*6 SCREW	1
3	INDICE	1
4	PALSTIC COVER	1
5	CARTRIDGE COVER	1
6	35MM CARTRIDGE	1
7	BODY	1
8	M4*8 SCREW	1
9	BASE PLATE	1
10	46*38*2.5 WASHER	1
11	M10*1*35 FLEXI TAILS	2
12	M8 FIXING KIT	1
13	23*15*3 WASHER	1
14	NEOPERL AERATOR	1
15	M24*1 NOZZLE	1

FOR FURTHER ADVICE PLEASE CONTACT :-

SAGITTARIUS LTD UNIT 1 LOWER VICTORIA STREET—CHADDERTON—OLDHAM—OL9 9TU TEL:0616 6202029

EMAIL:TECHNICAL@SAGITTARIUSTAPS.CO.UK