

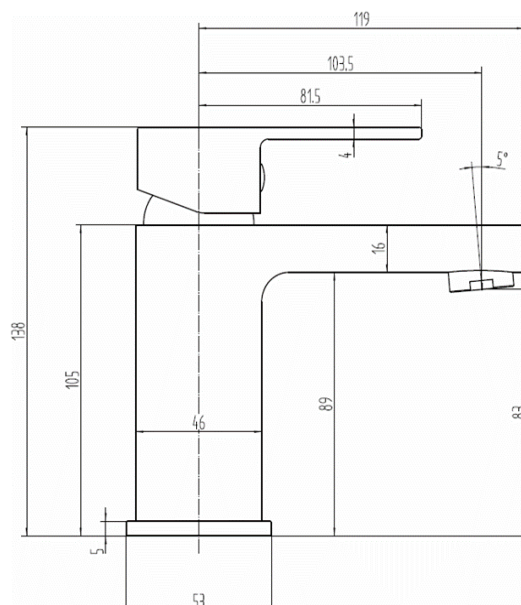
SAGITTARIUS

TAPS & SHOWERING

ANCONA MONO BASIN MIXER

AN/106

Construction	Brass Body, Zinc-alloy Handle
Finishes	Chrome plated
Product Type	Contemporary
Water Pressure	Min. 0.2 bar, Max. 6.0 bar
Tested Between	
Standards	Complies with BS6920, BS EN200
Cartridge	35mm Ceramic disc cartridge
Aerator	Spout aerator
Fitting	UK: M10 x 350mm G½" BSP Female Flexi Tails EU: M10 x 350mm G3/8" BSP Female Flexi Tails
Guarantee	10 years against manufacturing faults (excluding serviceable parts)
Additional Information	Supplied with G1¼" sprung waste (UK only)



Operating Water Pressure



LOW PRESSURE
0.2 - 0.5 bar



COMBI BOILER



HIGH PRESSURE
1.2 - 1.5+ bar

Flow Rates (Litres per minute)

System Pressure	0.1 Bar	0.2 Bar	0.3 Bar	0.5 Bar	1.0 Bar	1.5 Bar	2.0 Bar	3.0 Bar	4.0 Bar	5.0 Bar
	-	4.5	-	6.8	9.7	-	13.7	16.7	-	-

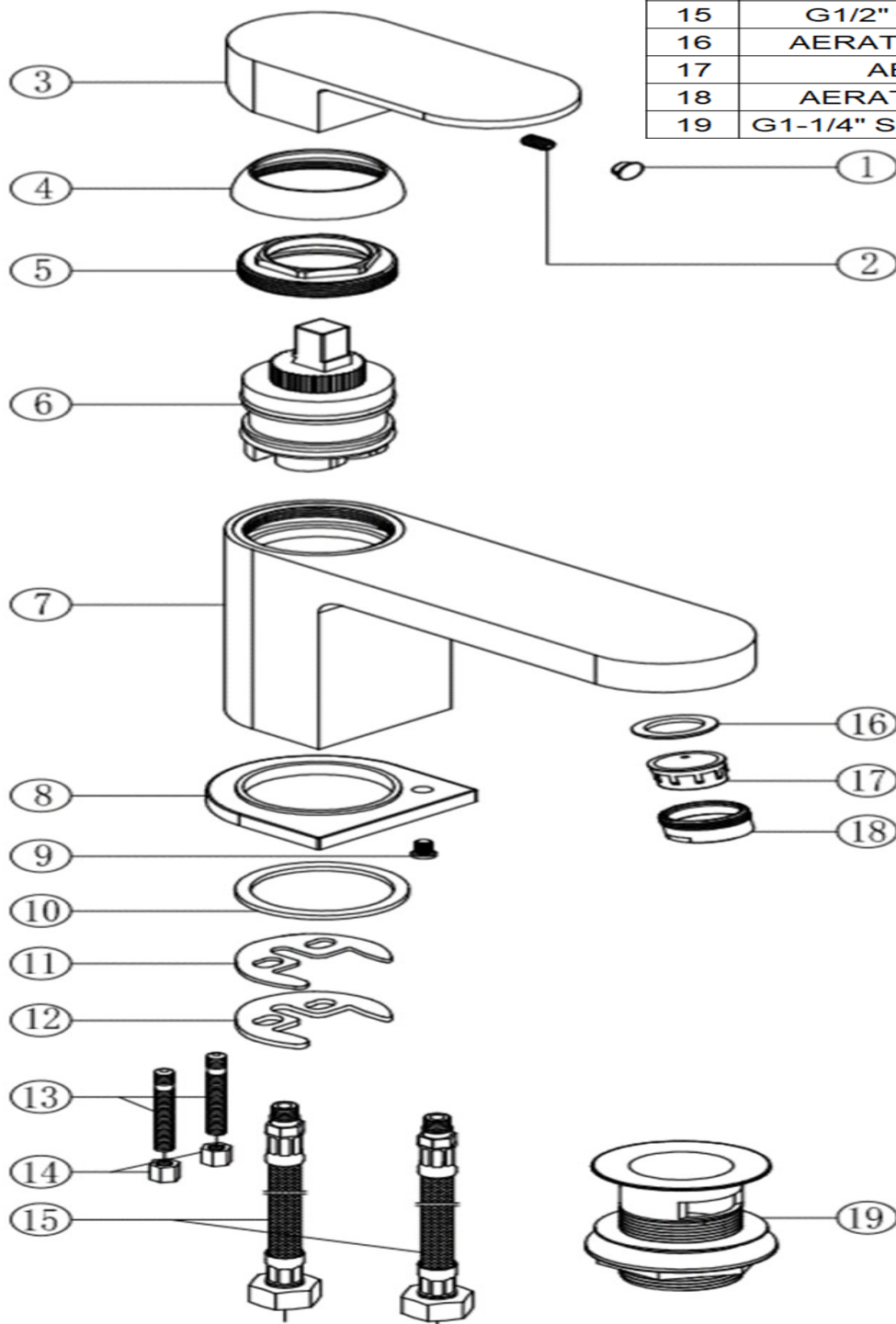
The information contained on this page was correct at the date of issue. Fitting dimensions are provided as a guide only. Some variation may occur due to manufacturing tolerances. We pursue a policy of continuing improvement in design and performance of our products and so reserve the right to change specifications without prior notice

FOR FURTHER ADVICE PLEASE CONTACT :-

SAGITTARIUS LTD UNIT 1 LOWER VICTORIA STREET—CHADDERTON—OLDHAM—OL9 9TU TEL:0616 6202029

EMAIL:TECHNICAL@SAGITTARIUSTAPS.CO.UK

NO.	ITEM	QTY
1	COVER CAP	1
2	HANDLE GRUB SCREW	1
3	HANDLE	1
4	HANDLE COLLAR	1
5	CARTRIDGE NUT	1
6	35mm CARTRIDGE	1
7	TAP BODY	1
8	BASE PLATE	1
9	BASE PLATE SCREW	1
10	BASE PLATE WASHER	1
11	HORSE-SHOE PLATE	1
12	HORSE-SHOE WASHER	1
13	FIXING ROD	2
14	FIXING NUT	2
15	G1/2" FLEXI-TAILS	2
16	AERATOR WASHER	1
17	AERATOR	1
18	AERATOR CASING	1
19	G1-1/4" SPRUNG WASTE	1



FOR FURTHER ADVICE PLEASE CONTACT :-

SAGITTARIUS LTD UNIT 1 LOWER VICTORIA STREET—CHADDERTON—OLDHAM—OL9 9TU TEL:0616 6202029

EMAIL:TECHNICAL@SAGITTARIUSTAPS.CO.UK