

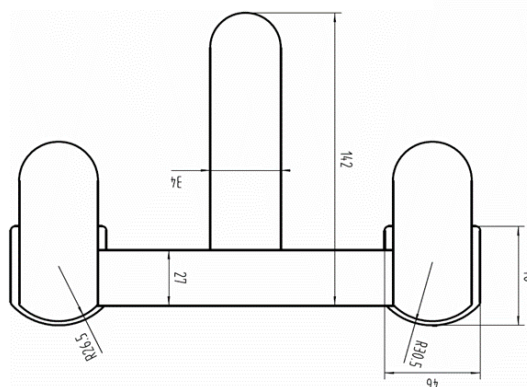
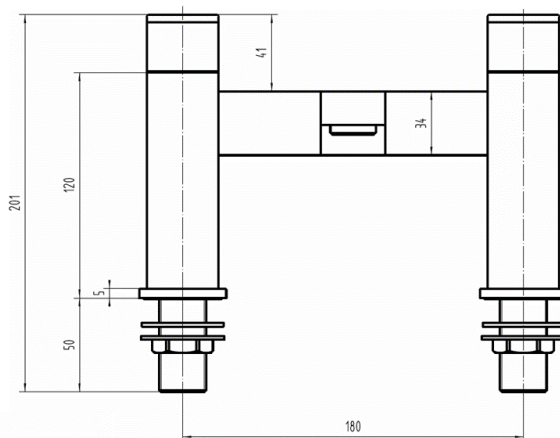
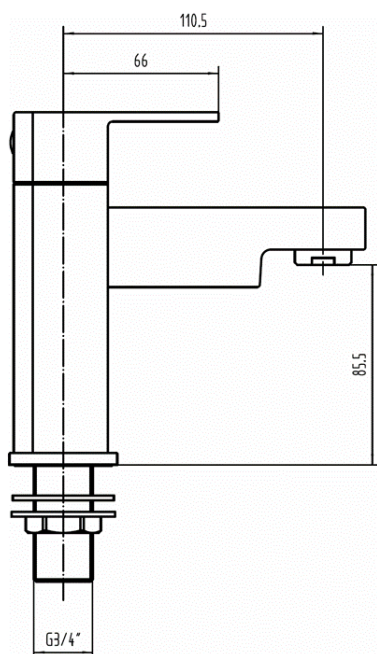
# SAGITTARIUS

## TAPS & SHOWERING

<b>Construction</b>	Brass Body (CuZn40Pb2), EN CW617N (equivalent to BS CZ122)
<b>Finishes</b>	Zinc-alloy Handles
<b>Product Type</b>	Chrome plated to BS EN 248
<b>Water Pressure</b>	Contemporary
<b>Tested Between</b>	Min. 0.3 bar, Max. 6.0 bar
<b>Standards</b>	Complies with BS5412, BS EN200
<b>Cartridge</b>	1/4 Turn 3/4" Ceramic disc valves
<b>Fitting</b>	Brass G3/4" BSP tails
<b>Aerator</b>	Spout aerator
<b>Guarantee</b>	10 years against manufacturing faults (excluding serviceable parts)

### ANCONA BATH FILLER

AN/104



The information contained on this page was correct at the date of issue. Fitting dimensions are provided as a guide only. Some variation may occur due to manufacturing tolerances. We pursue a policy of continuing improvement in design and performance of our products and so reserve the right to change specifications without prior notice

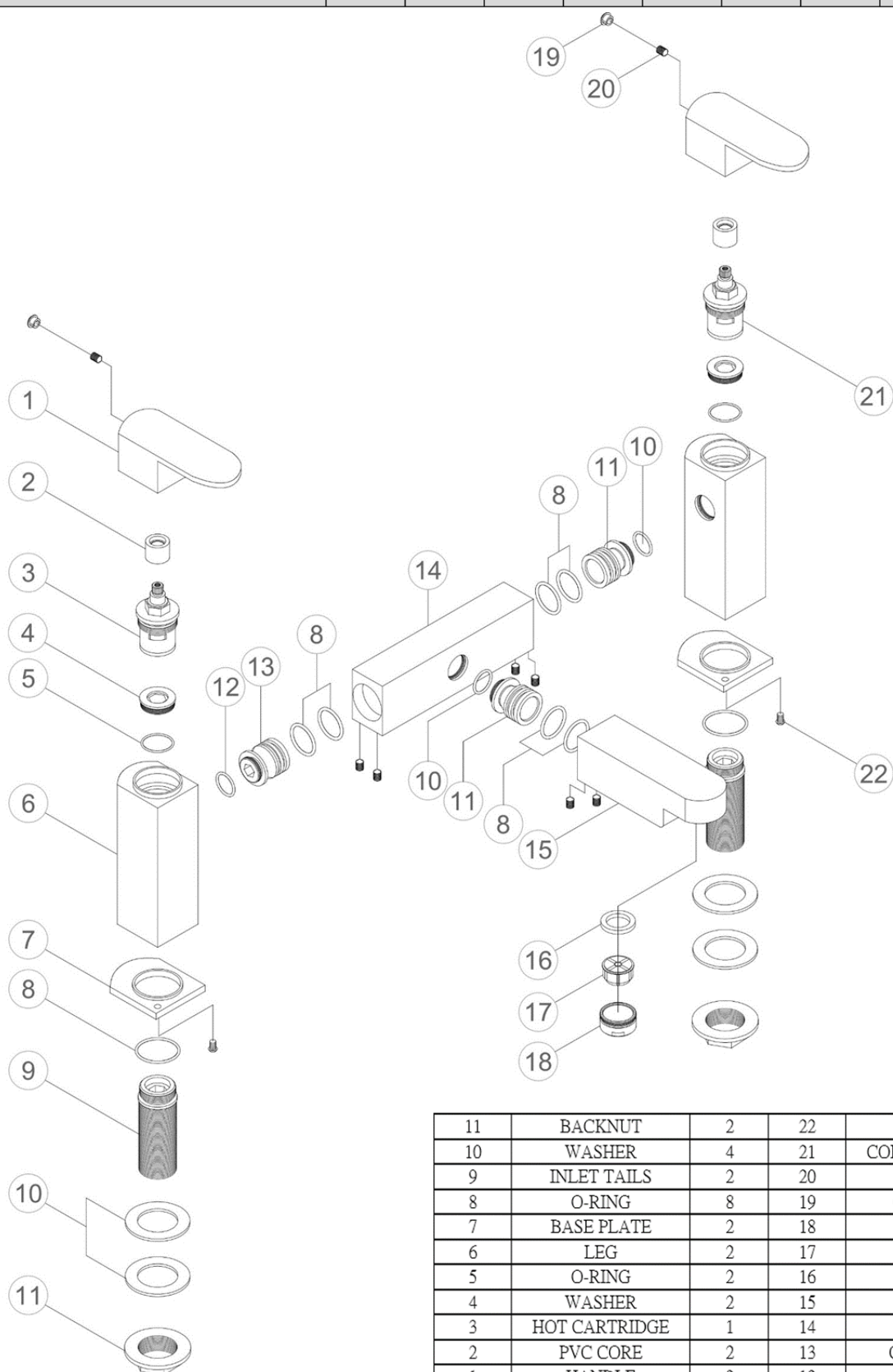
FOR FURTHER ADVICE PLEASE CONTACT :-

SAGITTARIUS LTD UNIT 1 LOWER VICTORIA STREET—CHADDERTON—OLDHAM—OL9 9TU TEL:0616 6202029

EMAIL:TECHNICAL@SAGITTARIUSTAPS.CO.UK

### Flow Rates (Litres per minute)

System Pressure	0.1 Bar	0.2 Bar	0.3 Bar	0.5 Bar	1.0 Bar	1.5 Bar	2.0 Bar	3.0 Bar	4.0 Bar	5.0 Bar
	-	11.3	-	17.5	26.0	-	34.0	36.0	-	-



11	BACKNUT	2	22	GRUB	2
10	WASHER	4	21	COLD CARTRIDGE	1
9	INLET TAILS	2	20	GRUB	8
8	O-RING	8	19	COVER CAP	2
7	BASE PLATE	2	18	NOZZLE	1
6	LEG	2	17	AERATOR	1
5	O-RING	2	16	WASHER	1
4	WASHER	2	15	SPOUT	1
3	HOT CARTRIDGE	1	14	BODY	1
2	PVC CORE	2	13	CONNECTOR	3
1	HANDLE	2	12	O-RING	3
No.	DESCRIPTION	QTY	No.	DESCRIPTION	QTY

FOR FURTHER ADVICE PLEASE CONTACT :-

SAGITTARIUS LTD UNIT 1 LOWER VICTORIA STREET—CHADDERTON—OLDHAM—OL9 9TU TEL:0616 6202029

EMAIL:TECHNICAL@SAGITTARIUSTAPS.CO.UK