

SAGITTARIUS

TAPS & SHOWERING

Construction Brass Body (CuZn40Pb2), EN CW617N (equivalent to BS CZ122); Zinc-alloy Handle (valve) & ABS Handle (handset)

Finishes Chrome plated to BS EN 248

Product Type Contemporary

Water Pressure Min. 0.5 bar, Max. 5.0 bar

Certification -

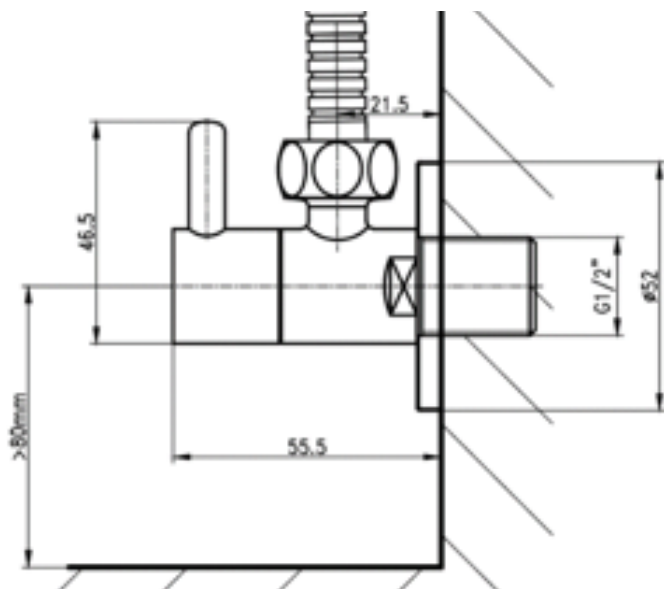
Cartridge Fitting 1/4 Turn 1/2" Ceramic disc valve & Push valve for handset
Brass G1/2" BSP Female thread (Inlet)

Guarantee 1 years against manufacturing faults

Additional Information
1. Stainless steel 1.2m hose
2. Wall bracket: Zinc-alloy

ERGO 15mm ISOLATING VALVE CHROME

AC/762/C



Flow Rates (Litres per minute)

System Pressure	0.1 Bar	0.2 Bar	0.3 Bar	0.5 Bar	1.0 Bar	1.5 Bar	2.0 Bar	3.0 Bar	4.0 Bar	5.0 Bar
	-	-	-	2.2	3.1	-	3.8	4.9	5.7	6.5

The information contained on this page was correct at the date of issue. Fitting dimensions are provided as a guide only. Some variation may occur due to manufacturing tolerances. We pursue a policy of continuing improvement in design and performance of our products and so reserve the right to change specifications without prior notice

FOR FURTHER ADVICE PLEASE CONTACT :-

SAGITTARIUS LTD UNIT 1 LOWER VICTORIA STREET—CHADDERTON—OLDHAM—OL9 9TU TEL:0616 6202029

EMAIL:TECHNICAL@SAGITTARIUSTAPS.CO.UK